

Changing Demographics and the Electoral Context of Los Angeles County

Dowell Myers,

School of Policy, Planning, and Development
University of Southern California

January 20, 2011

Overview

Racial and ethnic transition continues

Baby boomer tsunami

Political lag and disconnect

The new homegrown majority

The Two Demographic Narratives

The Old Story

- Whites Declining in California
- Coming Ethnic Political Majority
- Accelerating Immigration
- Too Much Population Growth
- Migration Swamping the State

The Two Demographic Narratives

The Old Story

- Whites Declining in California
- Coming Ethnic Political Majority
- Accelerating Immigration
- Too Much Population Growth
- Migration Swamping the State

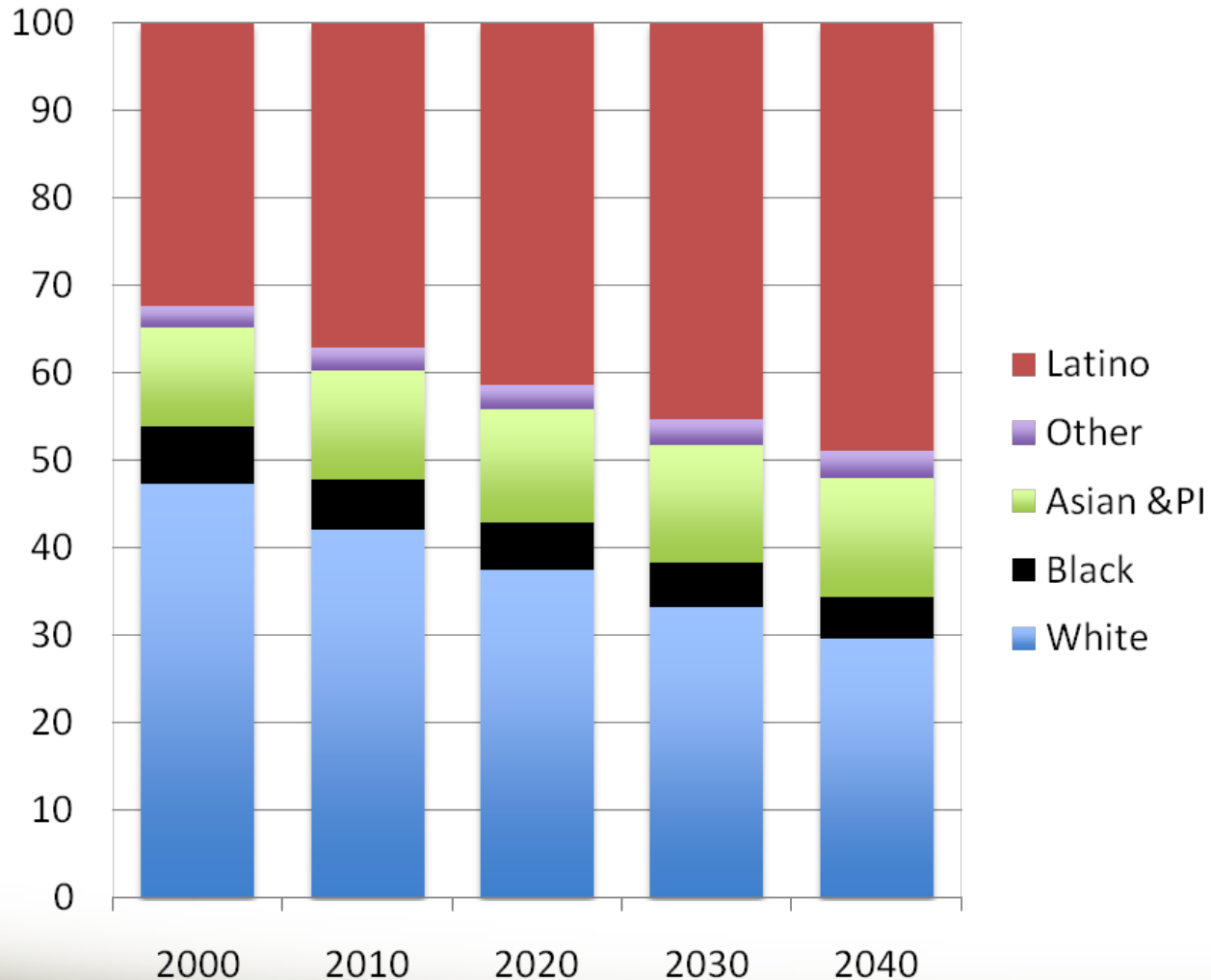
The New Story

- Steady Number of Whites at 16 Million
- No Majority – instead a Multi-Ethnic Partnership
- Declining Immigration
- Balancing the Baby Boomer Tsunami
- Rise of the New Homegrown Majority

Racial & Ethnic Transition Continues

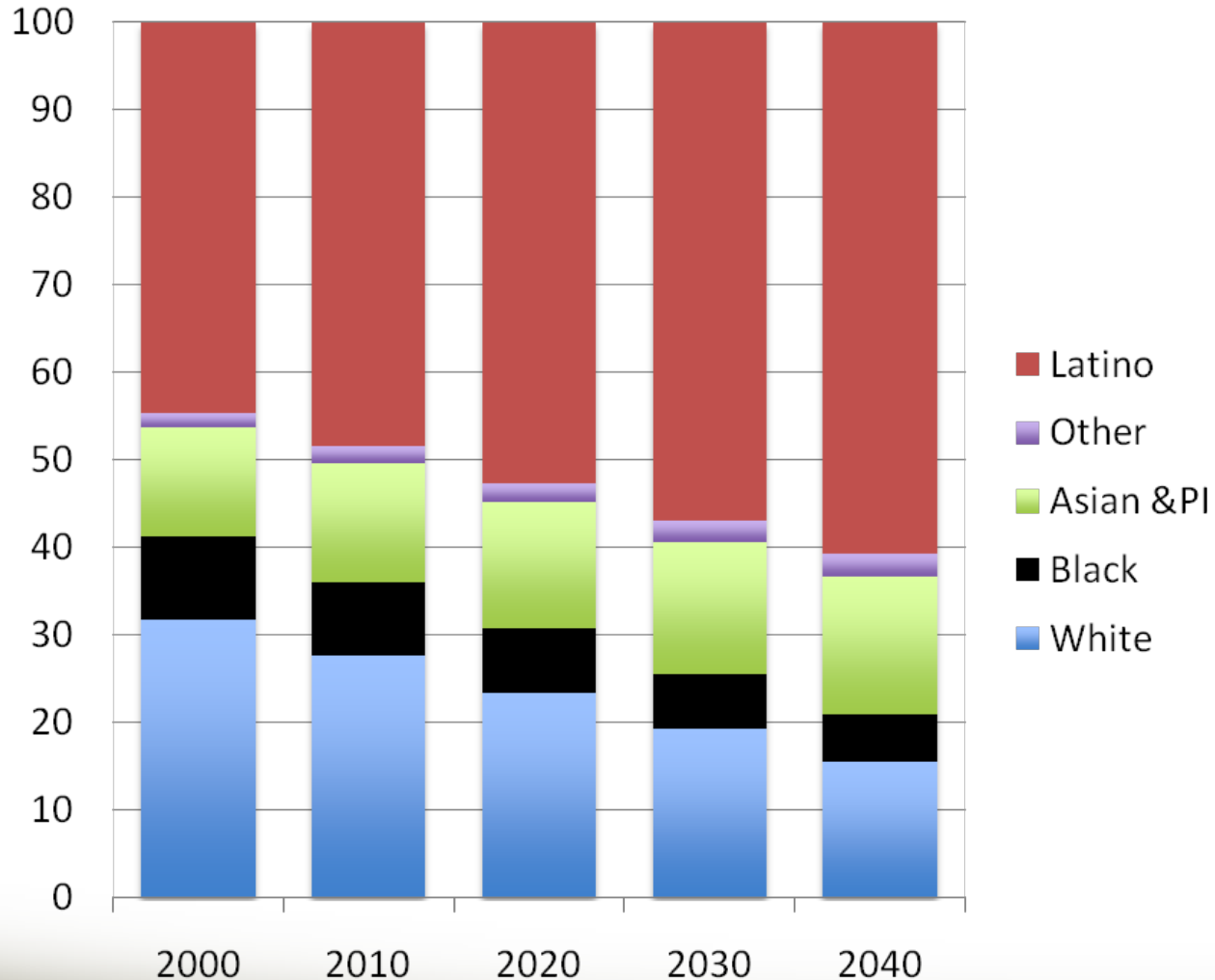
Changing Racial and Ethnic Composition

California



Changing Racial and Ethnic Composition

Los Angeles County



Baby Boomer Tsunami



Dowell Myers, University of Southern California









Dowell Myers, University of Southern Californi

Some of my *favorite* Latino Baby Boomers



Some of my *favorite* Latino Baby Boomers





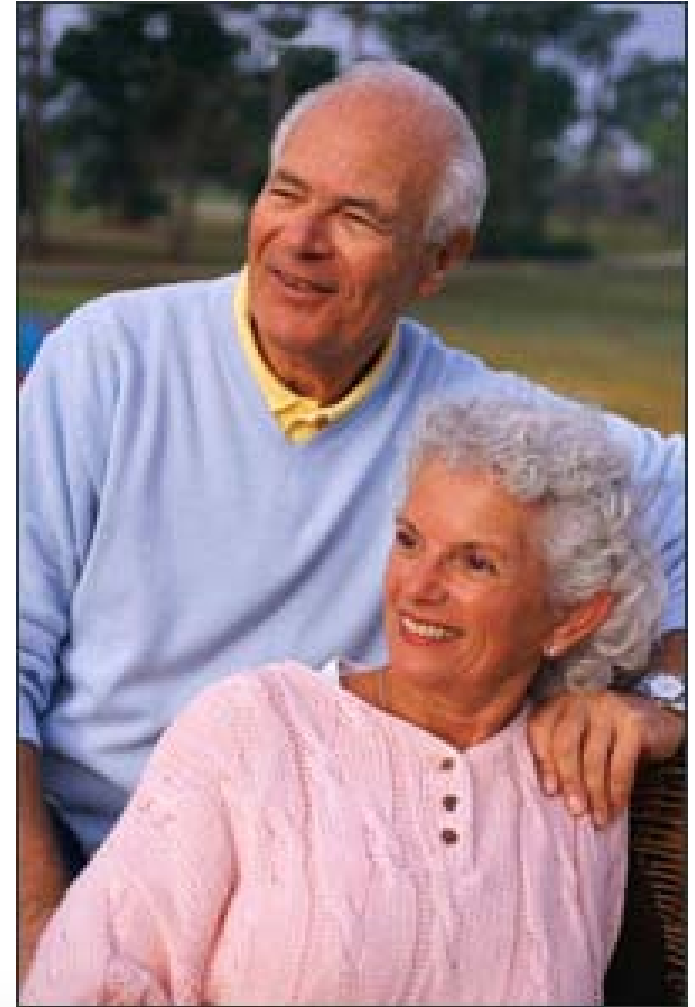
Dowell Myers, University of Southern California



Dowell Myers, University of Southern California



.....?



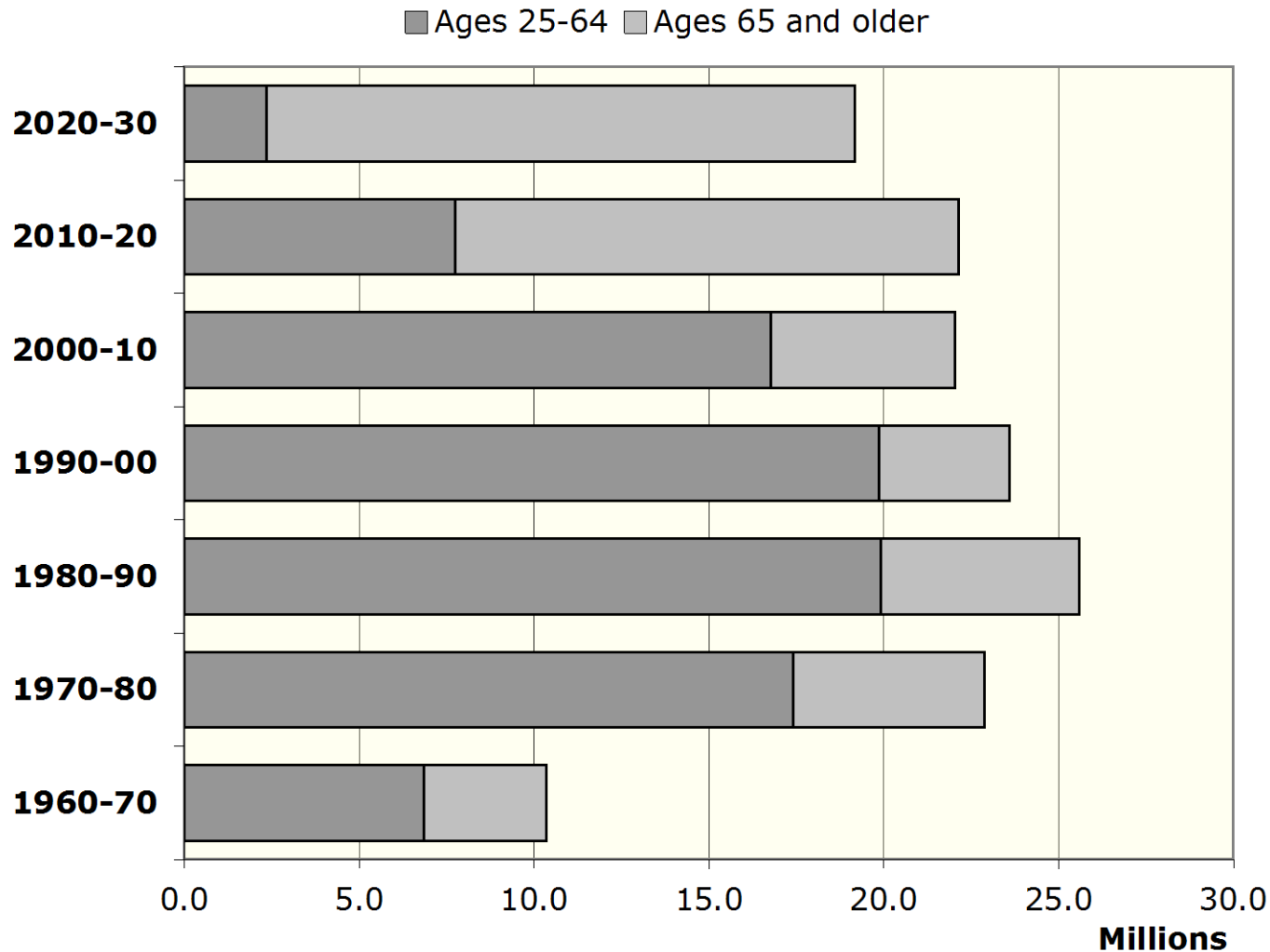
IT'S NEVER TOO LATE!



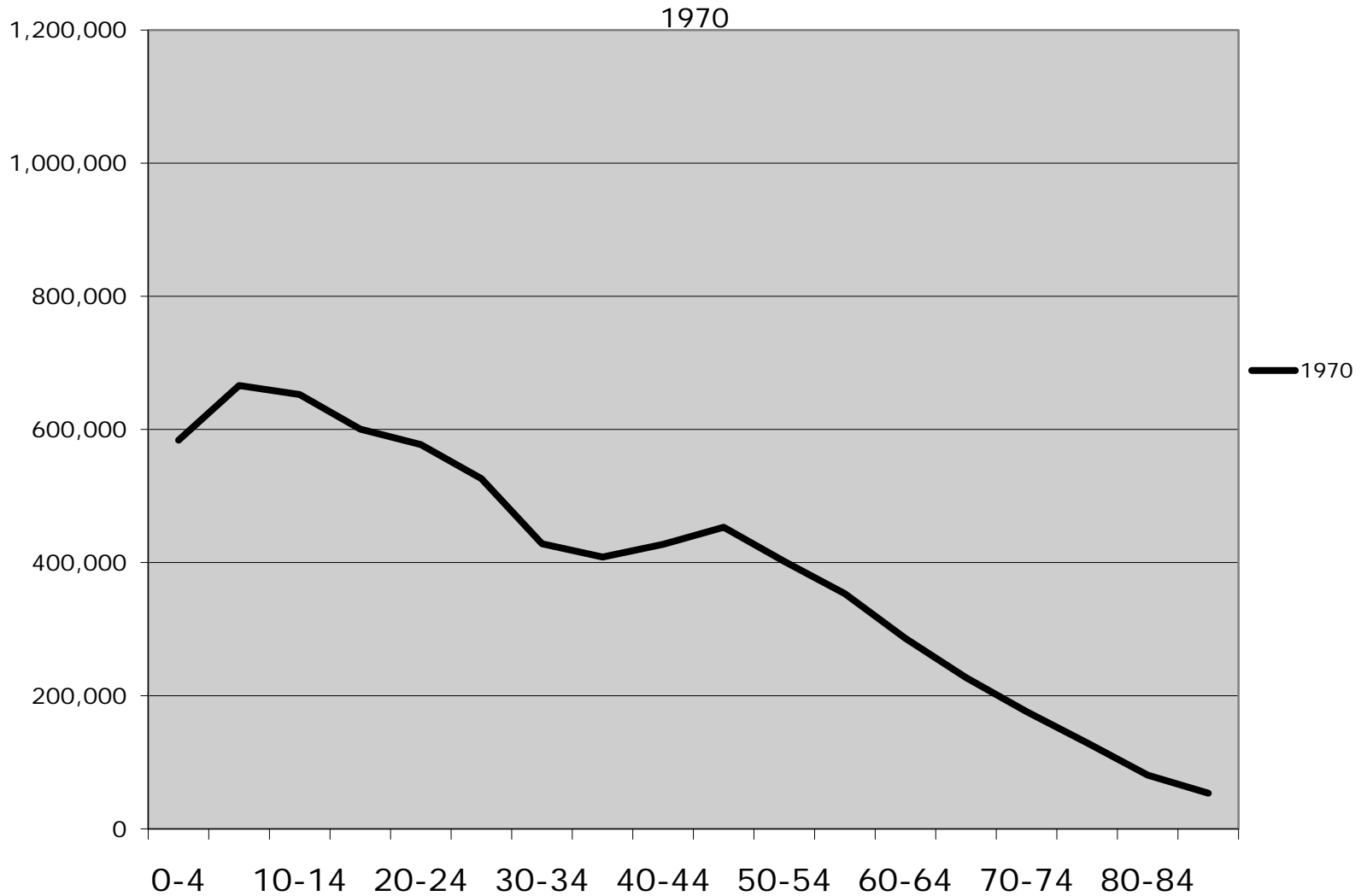


**56 million
still kicking in
2030**

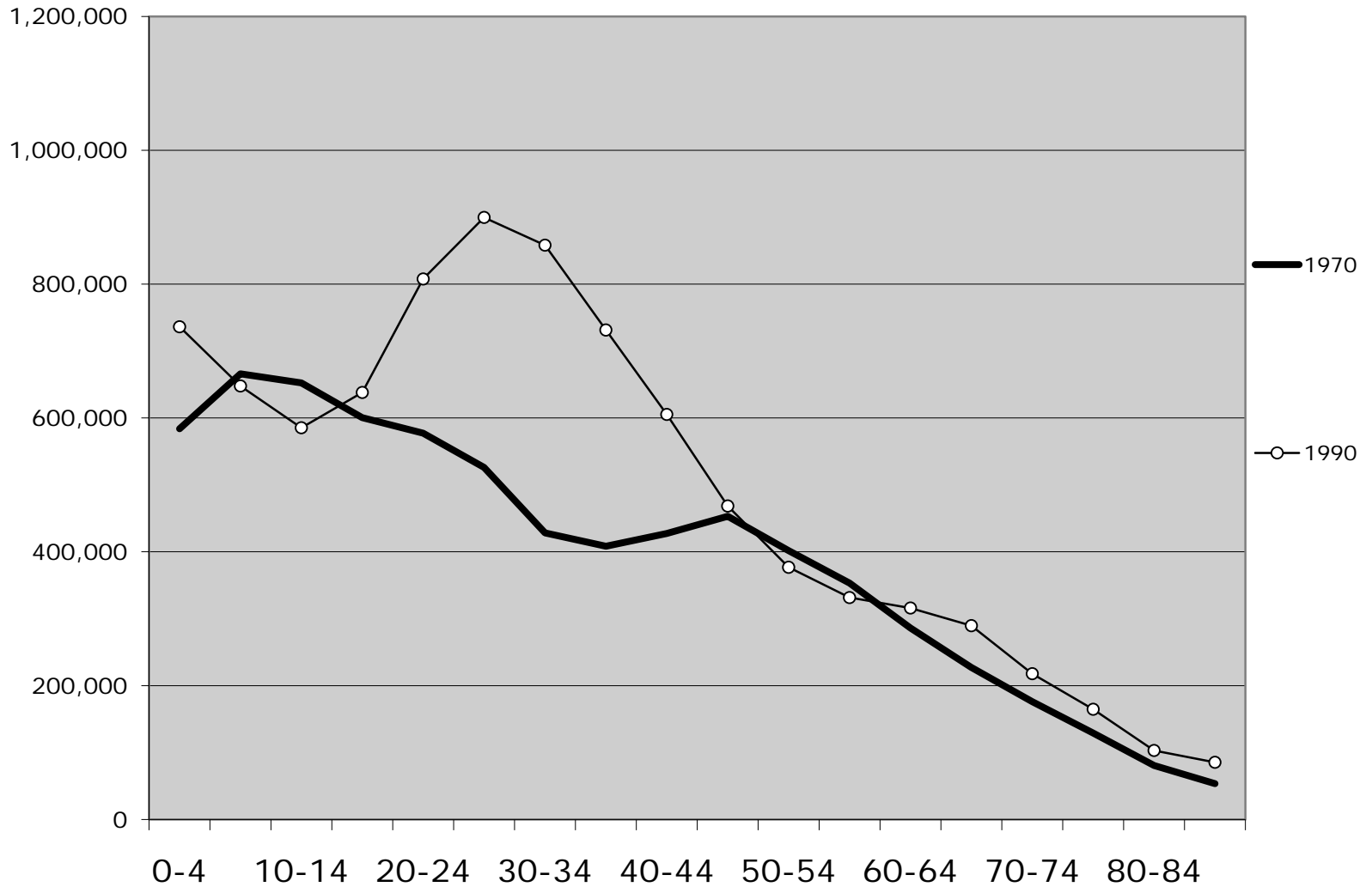
Population Growth in the US (Age 25+) by Major Segment Each Decade



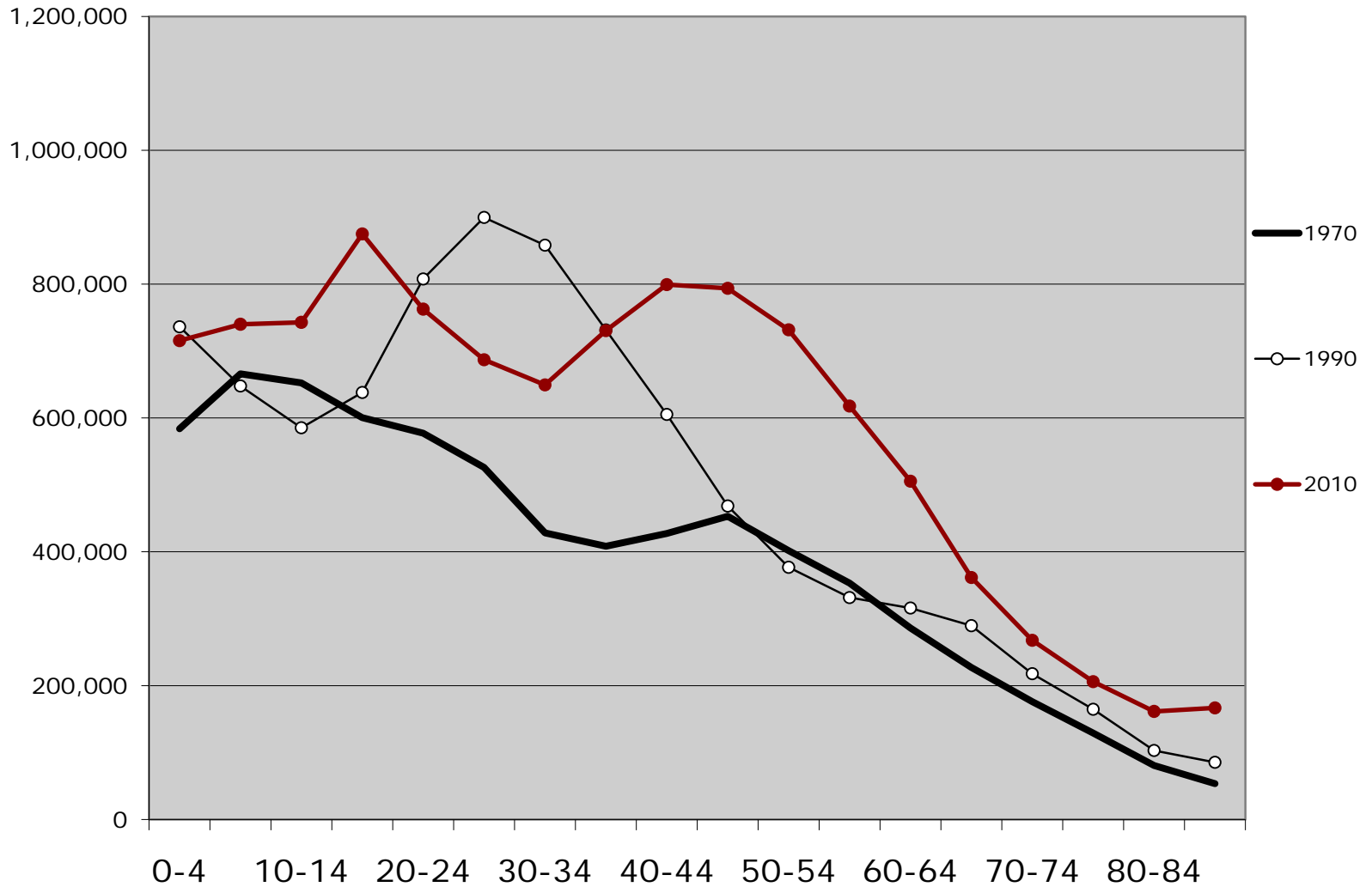
LA County: Population by Age



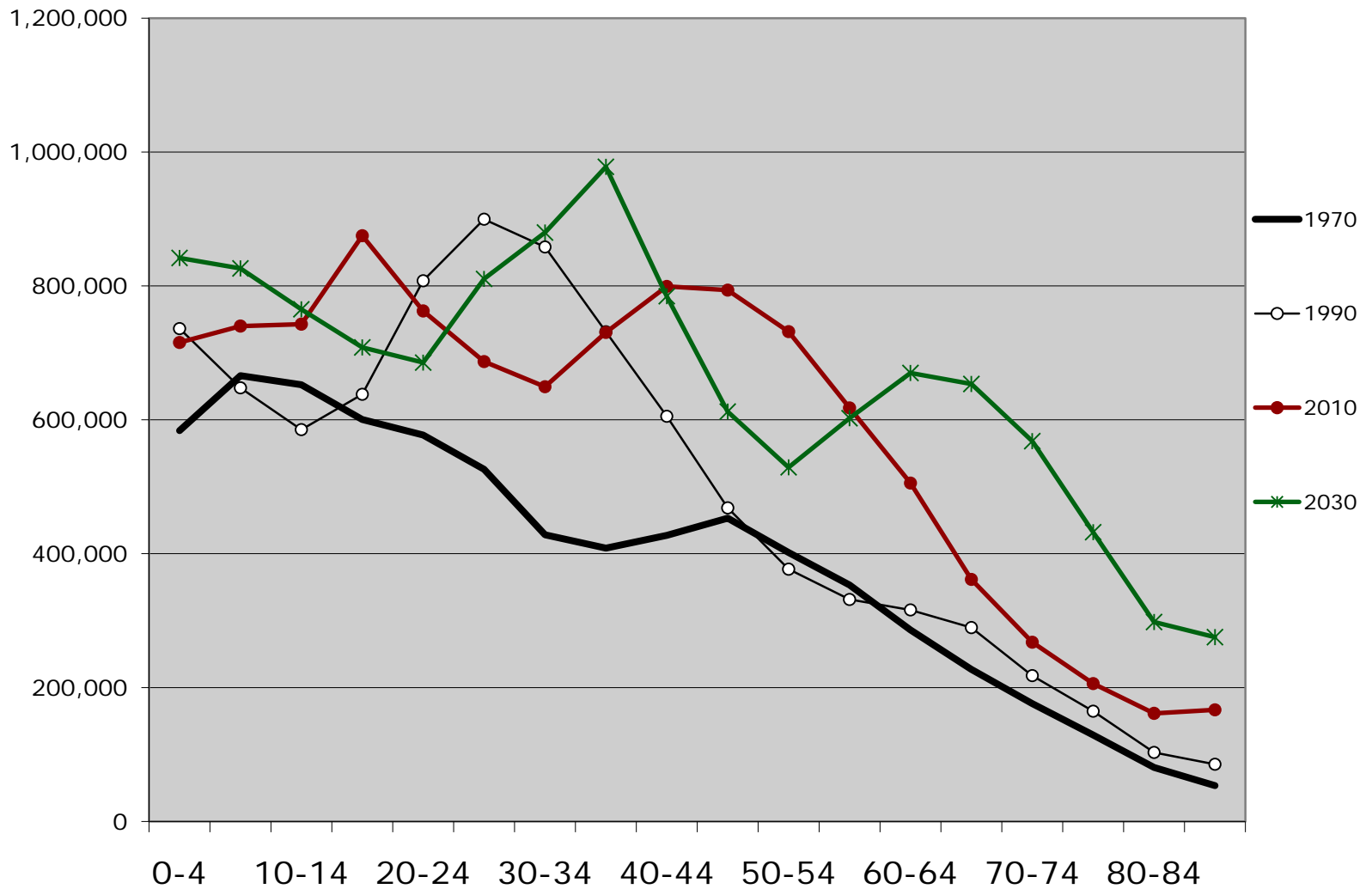
LA County: Population by Age



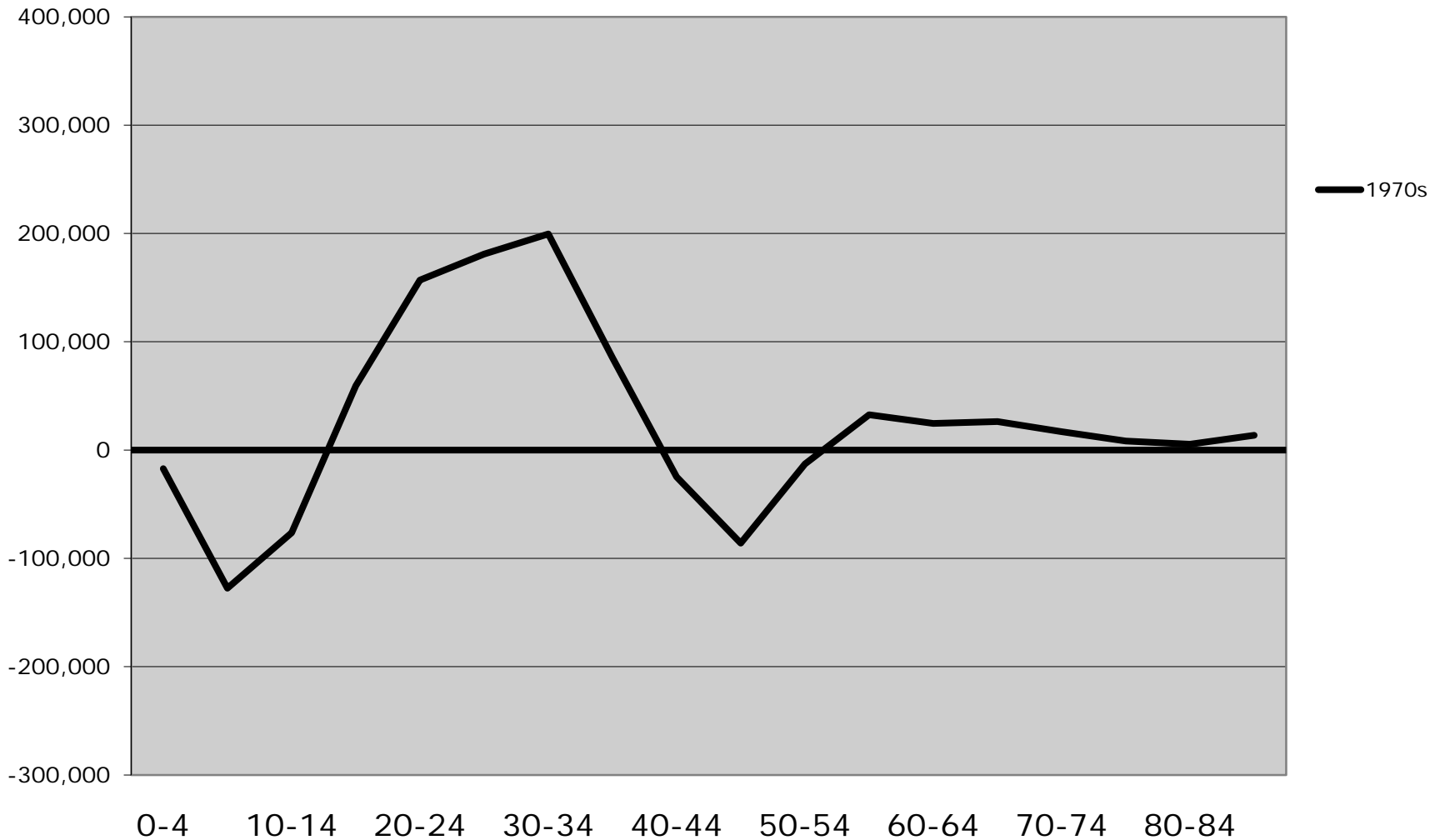
LA County: Population by Age



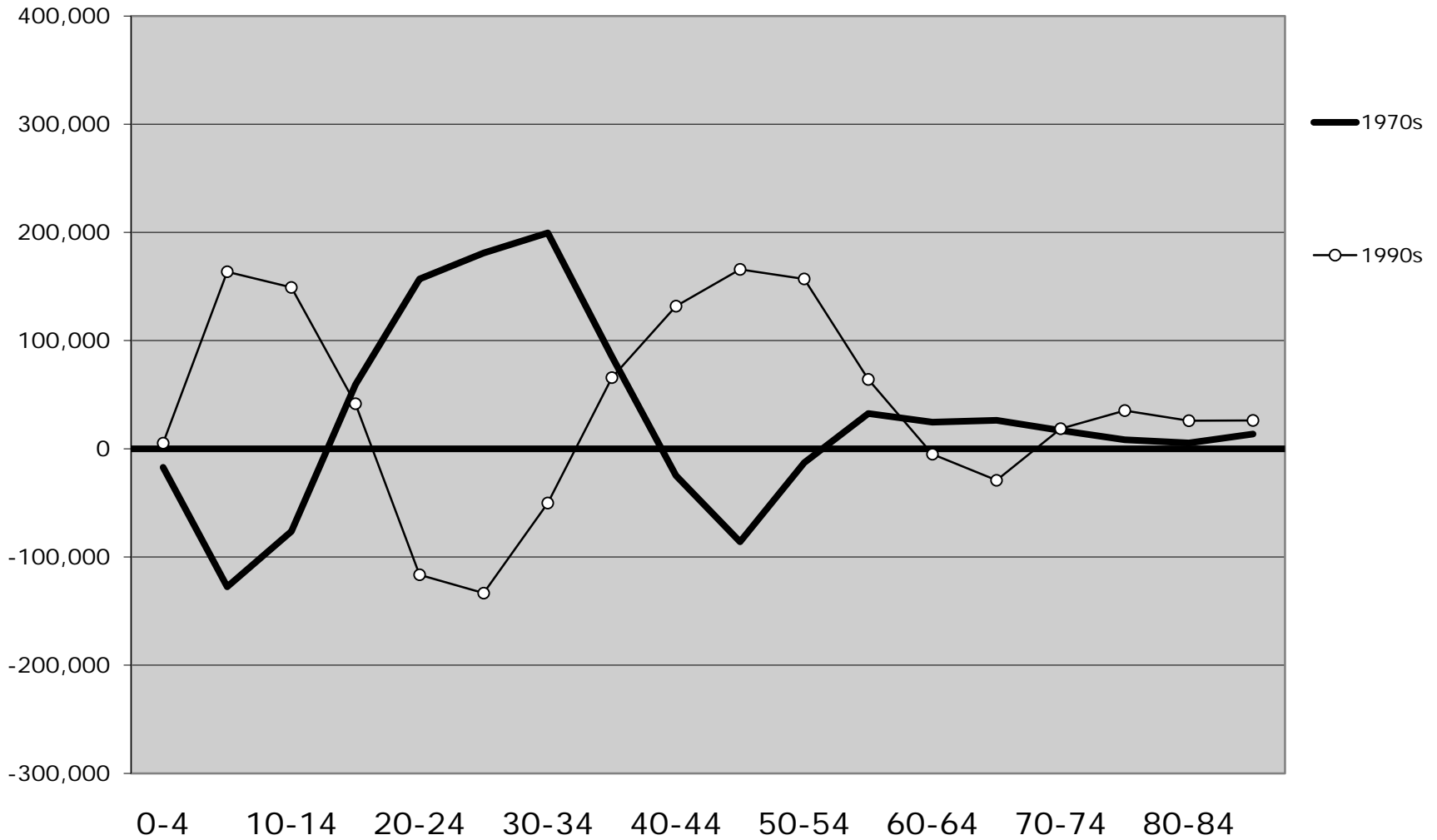
LA County: Population by Age



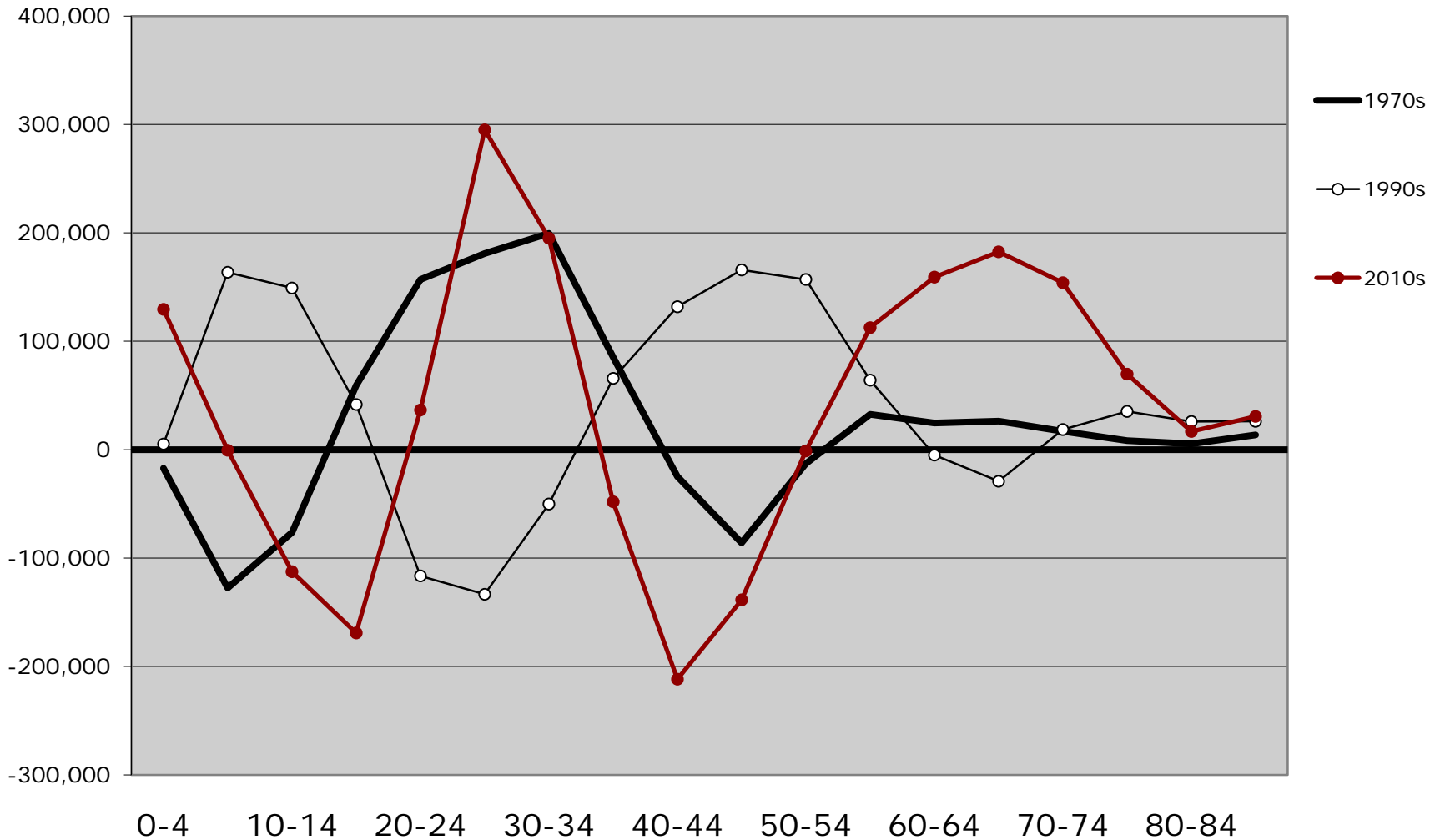
LA County: Growth by Age Group



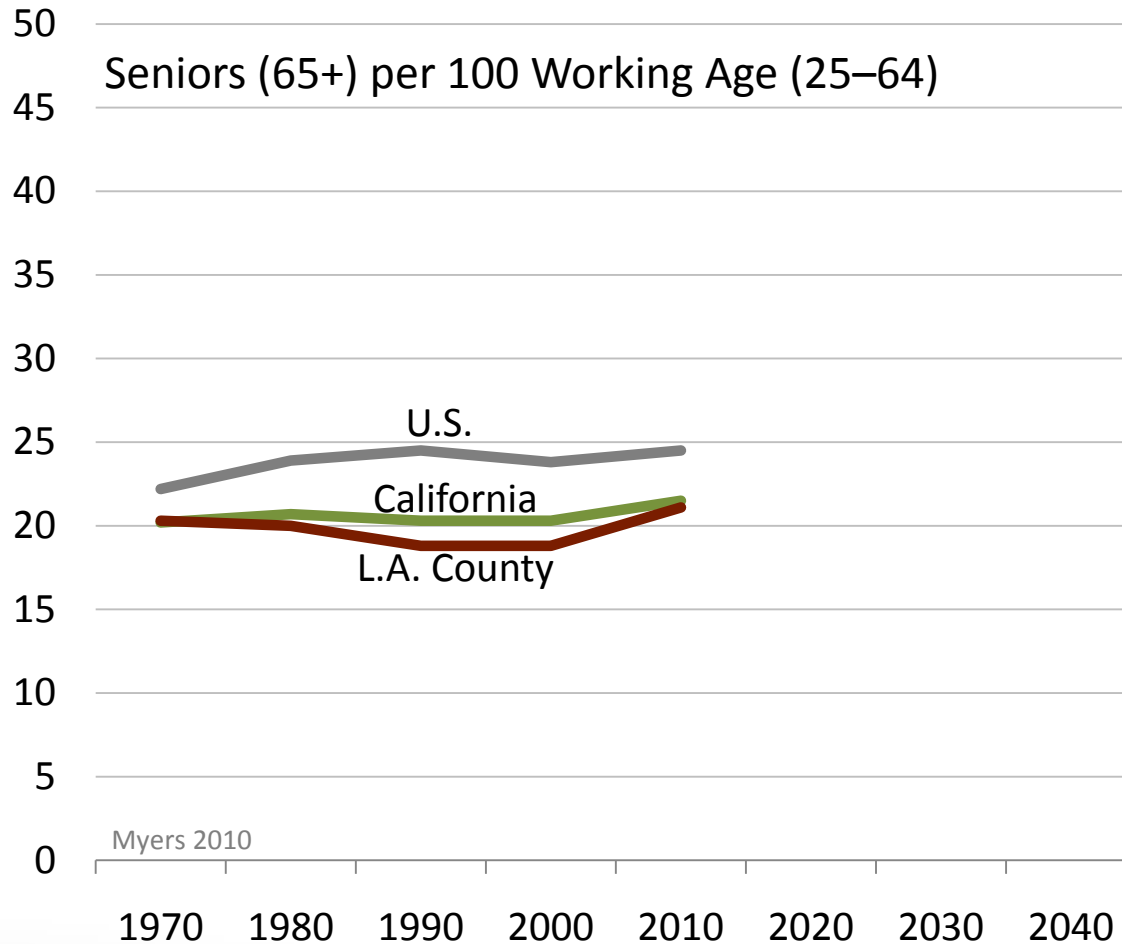
LA County: Growth by Age Group



LA County: Growth by Age Group



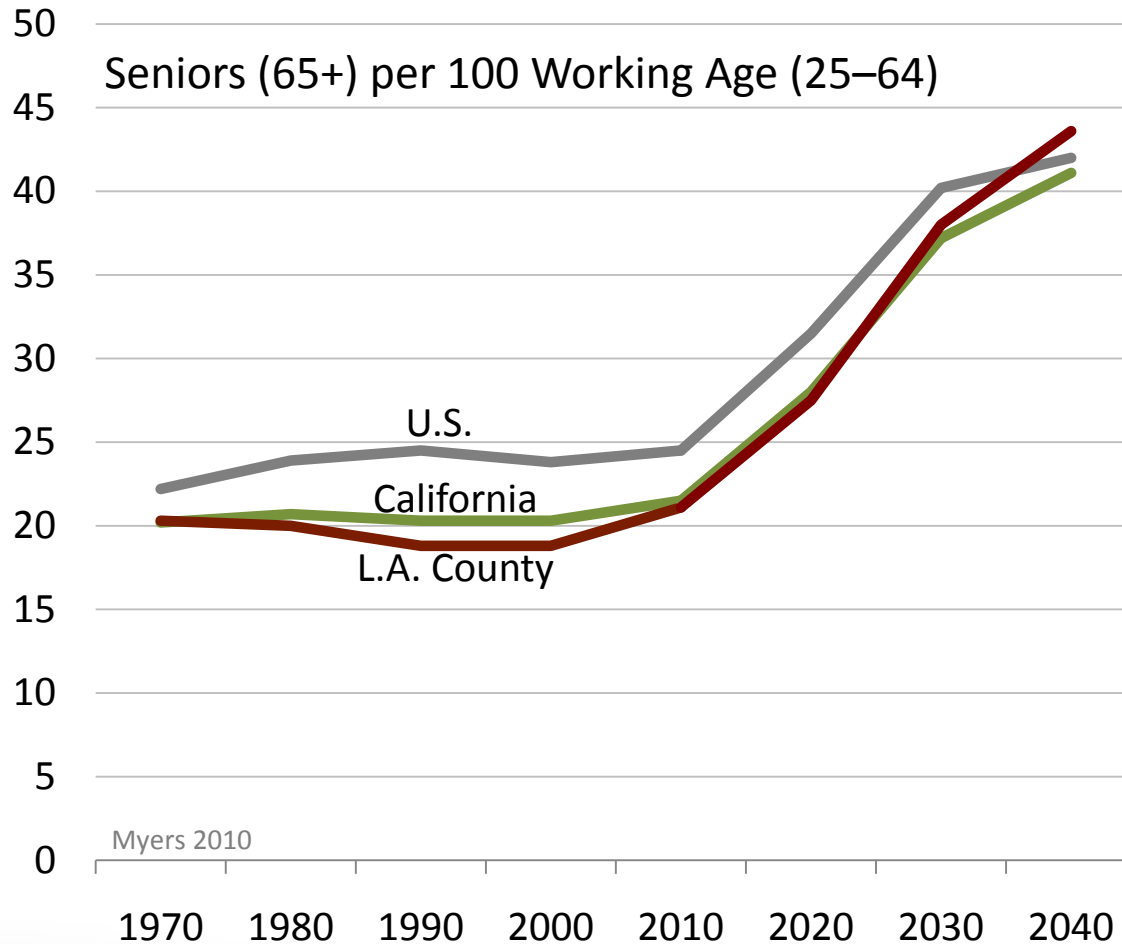
Baby Boomer Tsunami



Myers 2010

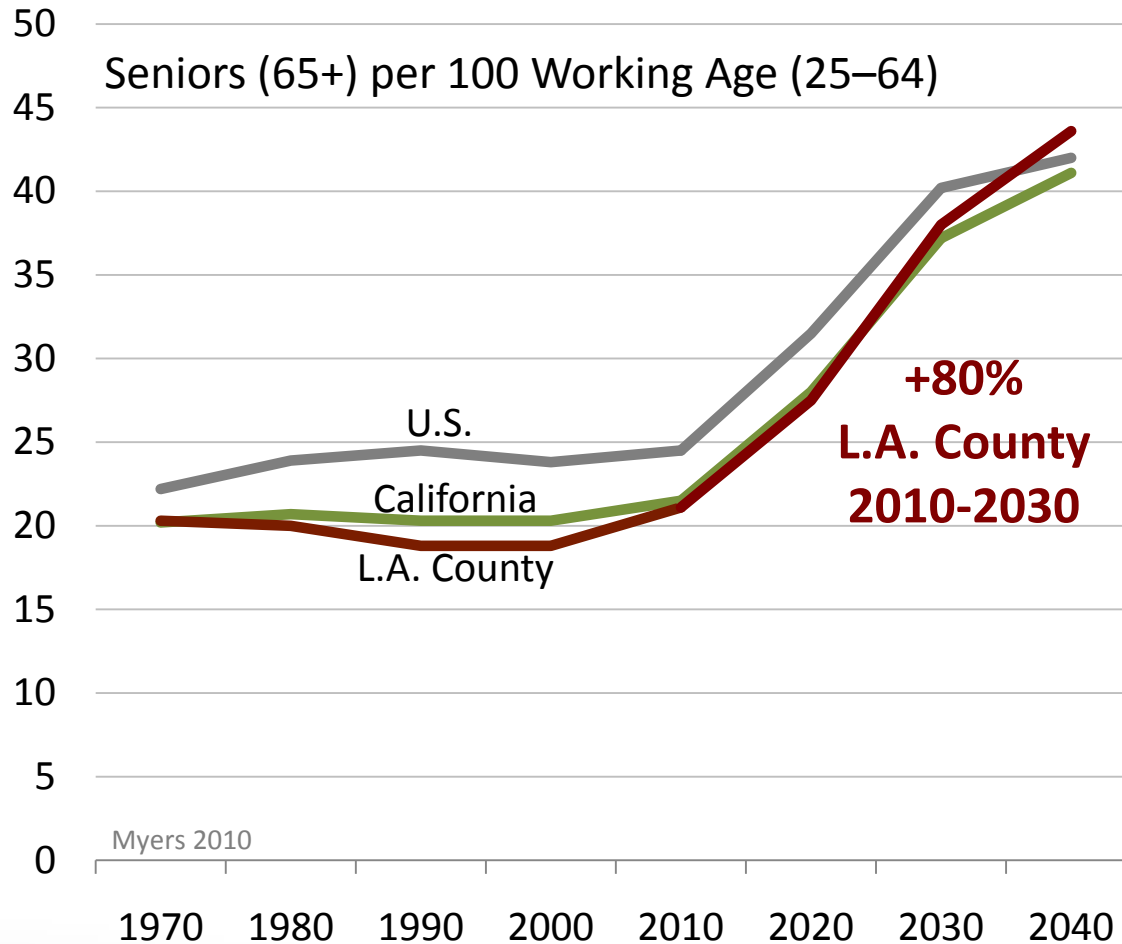
Source: California Department of Finance, Census Bureau, and Authors' calculations, 2010.

Baby Boomer Tsunami



Source: California Department of Finance, Census Bureau, and Authors' calculations, 2010.

Baby Boomer Tsunami

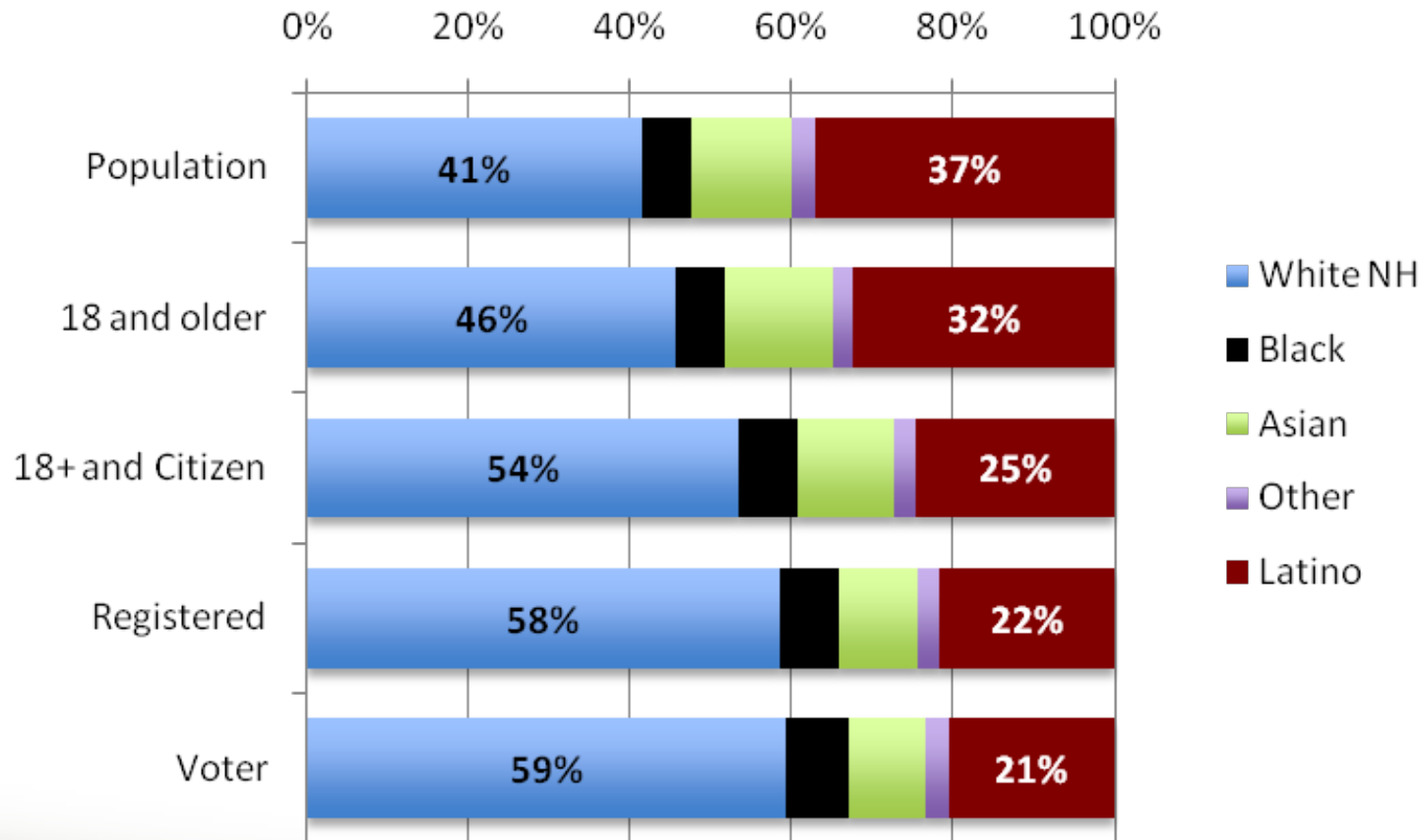


Source: California Department of Finance, Census Bureau, and Authors' calculations, 2010.

Political Lag & Disconnect

Political Lag of Demographic Change

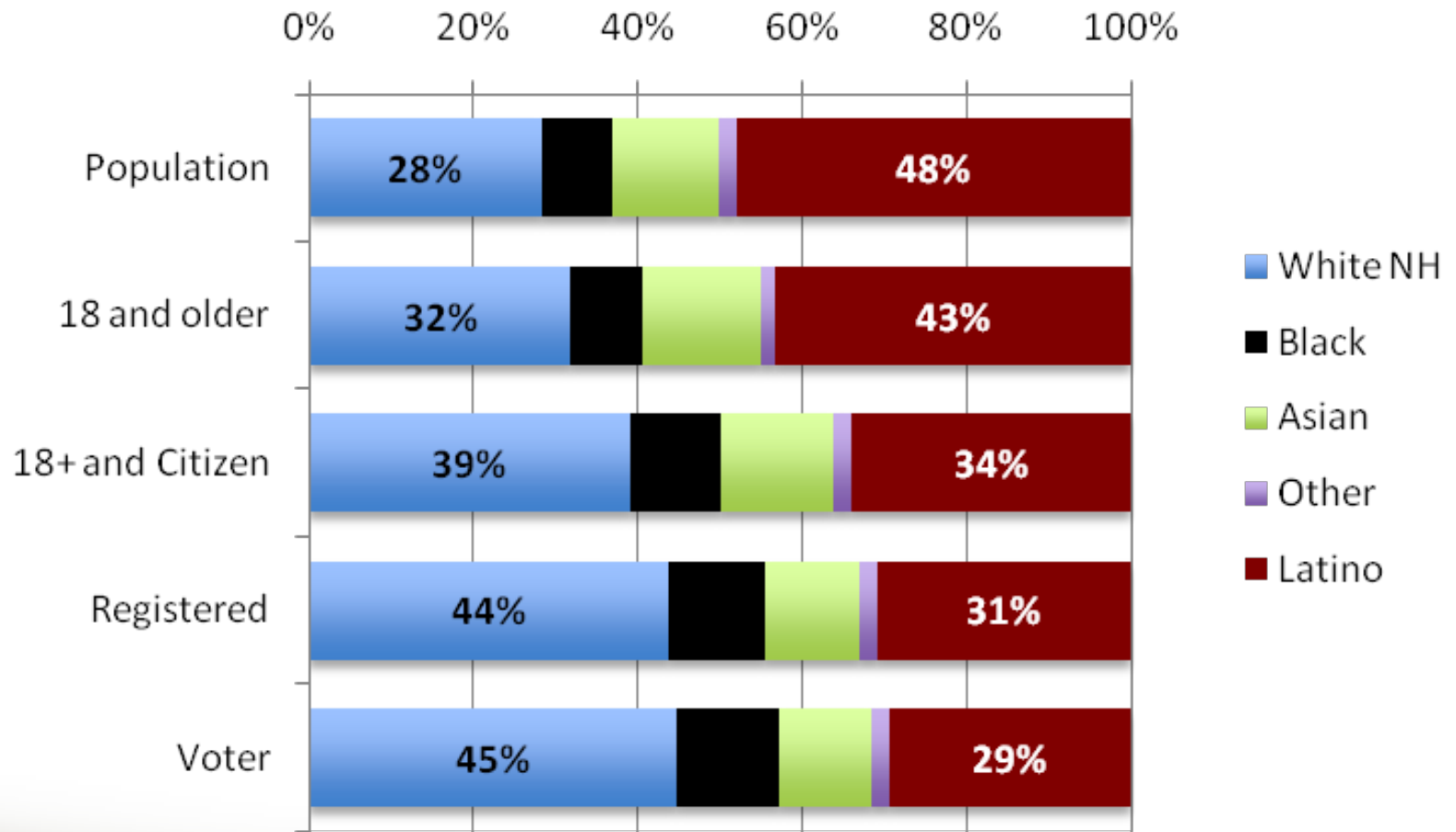
California, 2009



Source: ACS 2009 and CPS 2008 Voting Supplement and estimations by Dowell Myers

Political Lag of Demographic Change

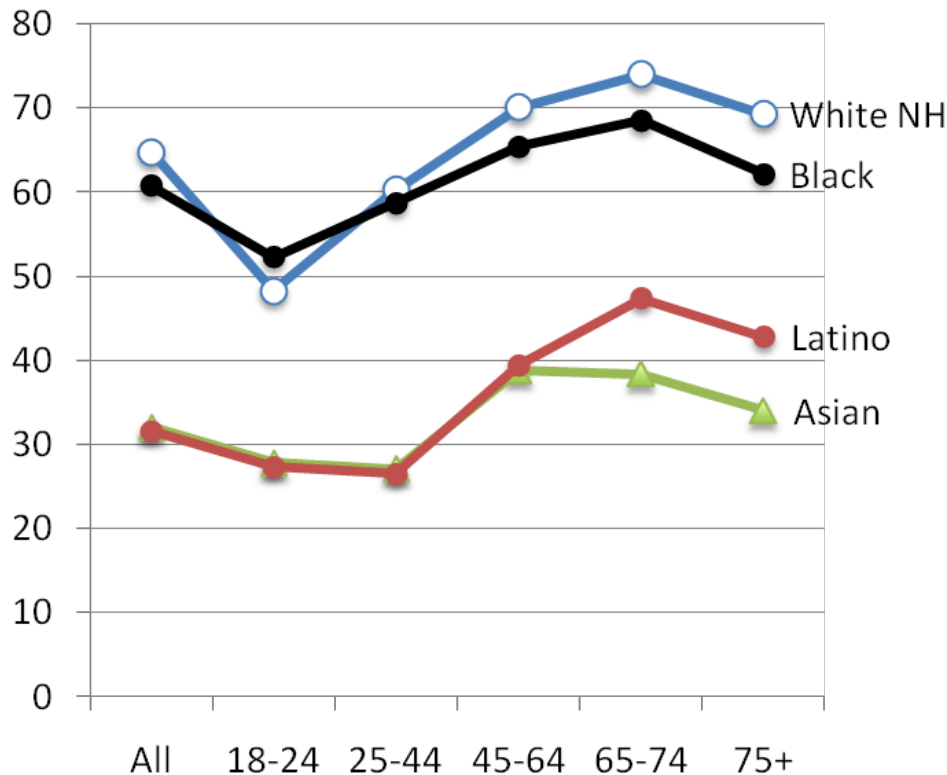
LA County, 2009



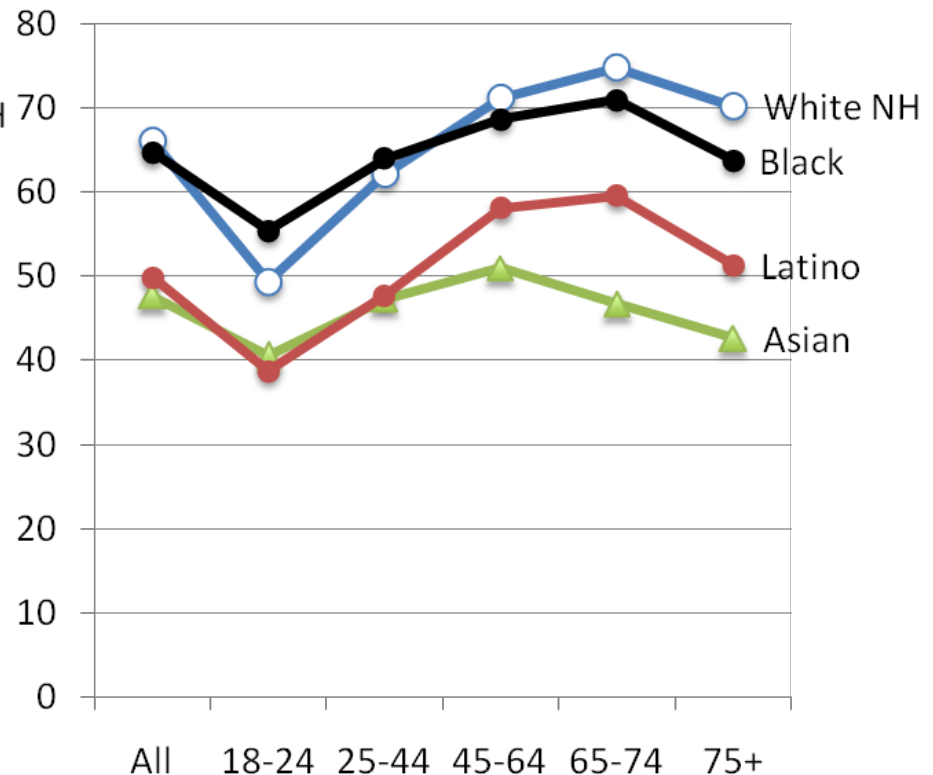
Source: ACS 2009 and CPS 2008 Voting Supplement and estimations by Dowell Myers

Share of Ethnic Population that Votes, U.S. 2008

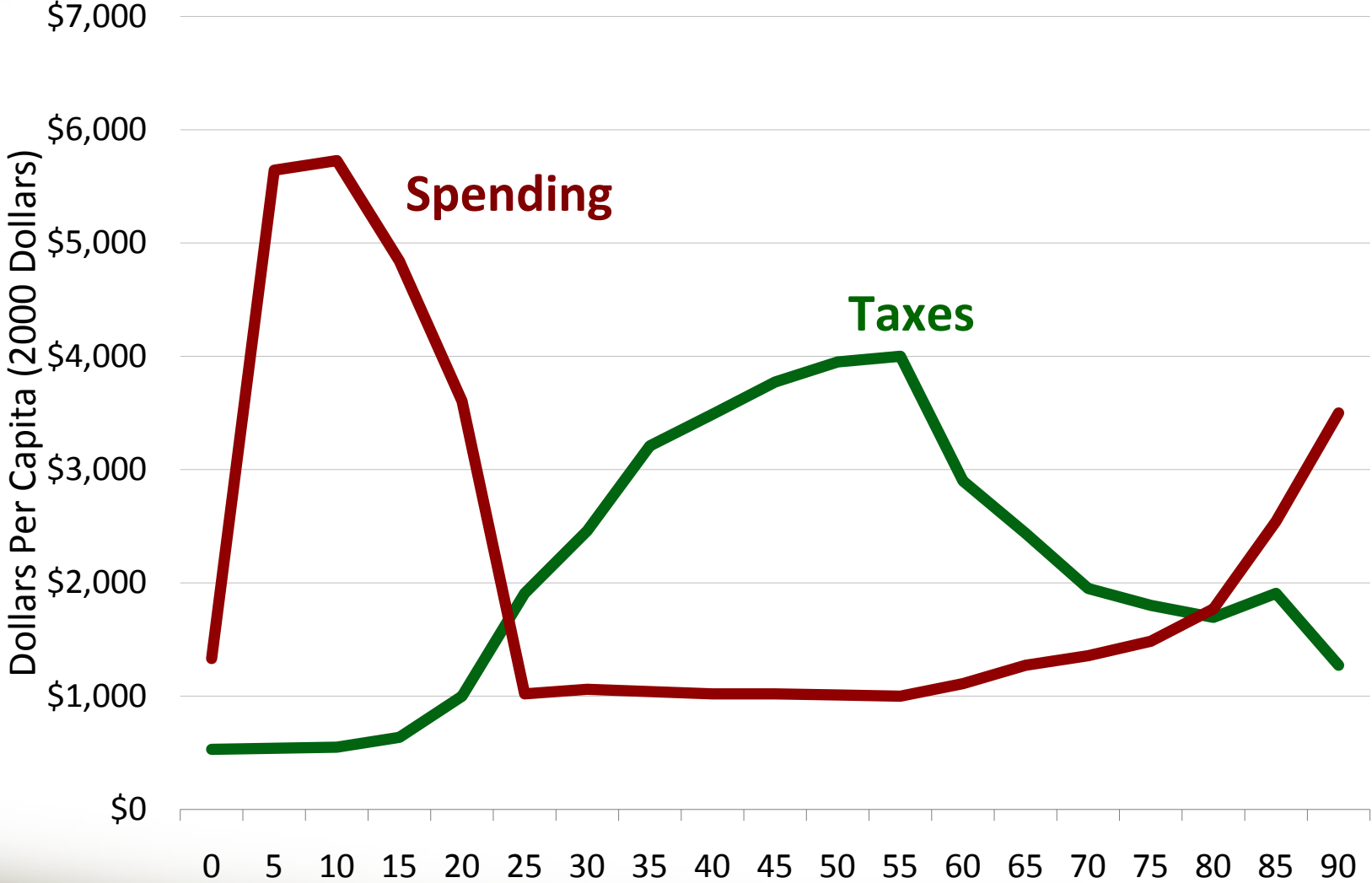
Voting Percent of Population



Voting Percent of Citizen Population

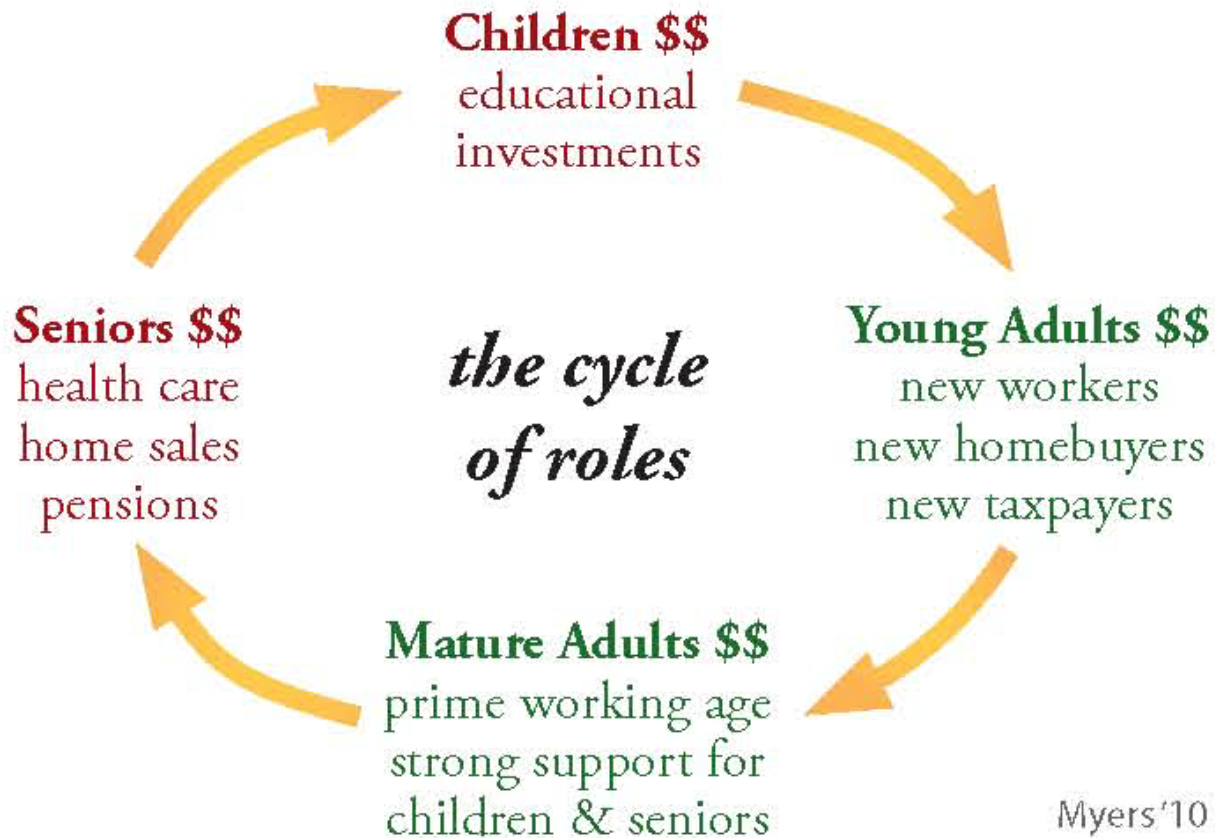


Spending and Taxes in California by Age, 2000



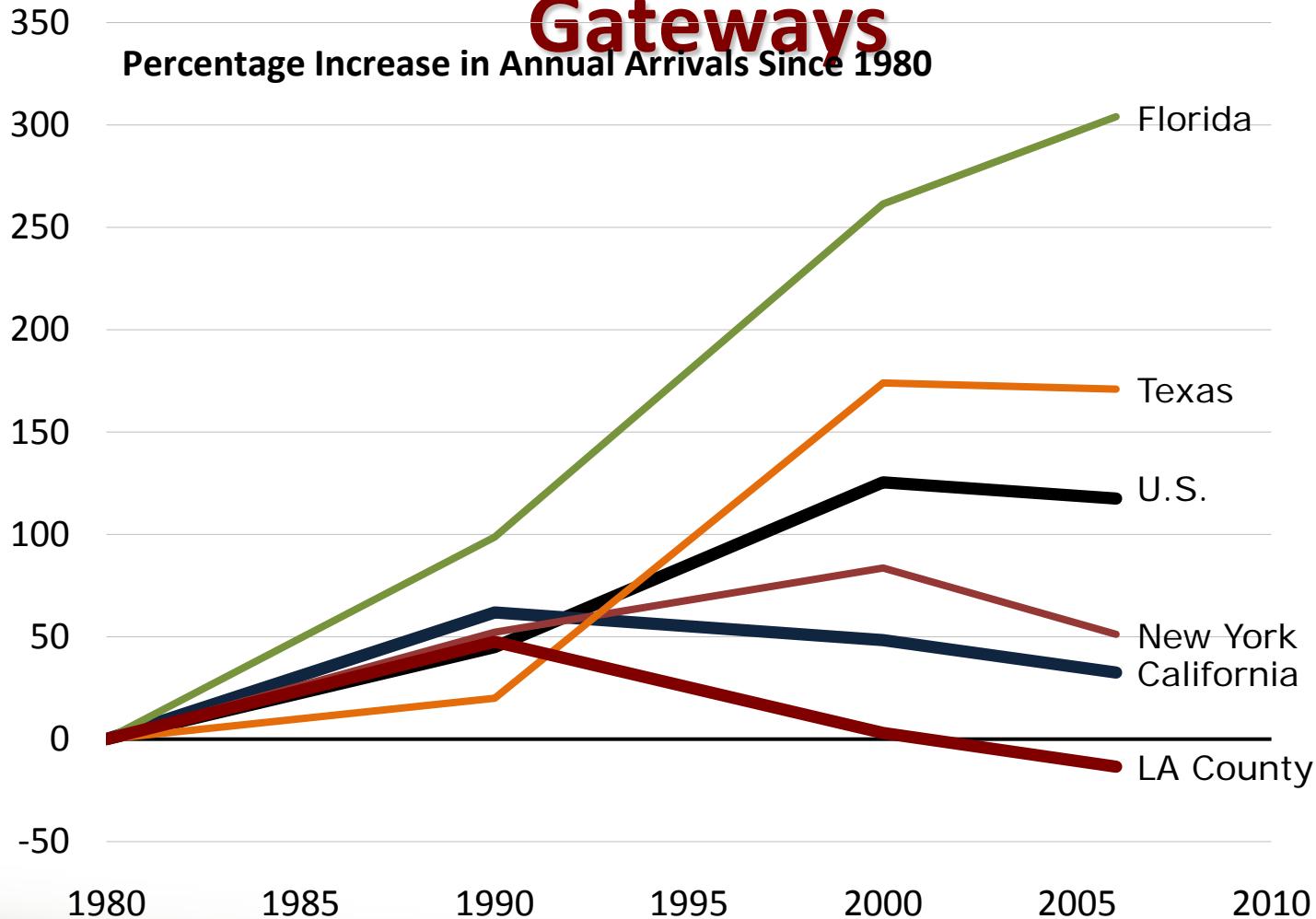
Source: *Immigrants and Boomers*, Figure 9.1; Ron Lee et al. (2003)

Intergenerational Connections

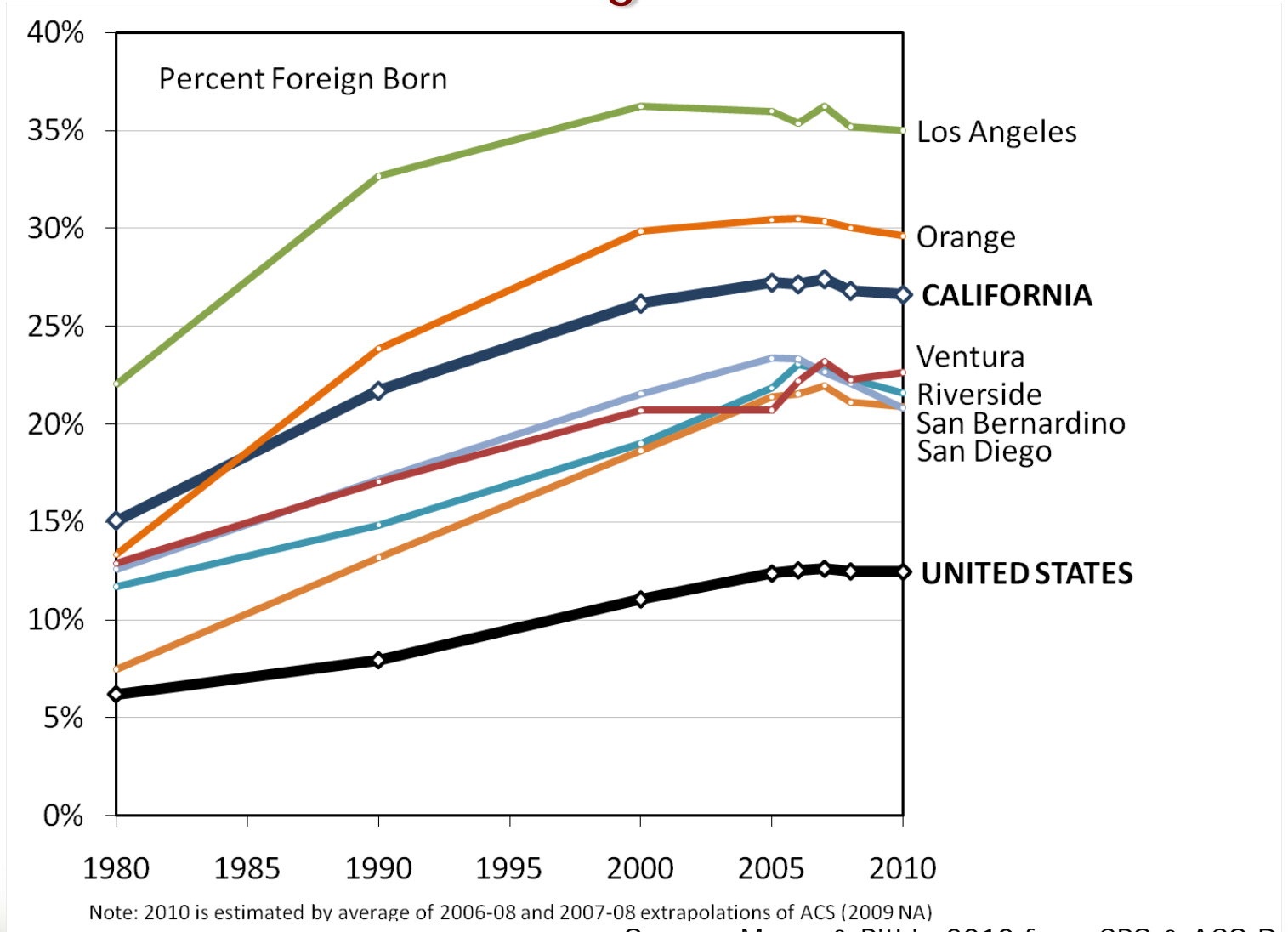


The New Homegrown Majority vs. Immigration

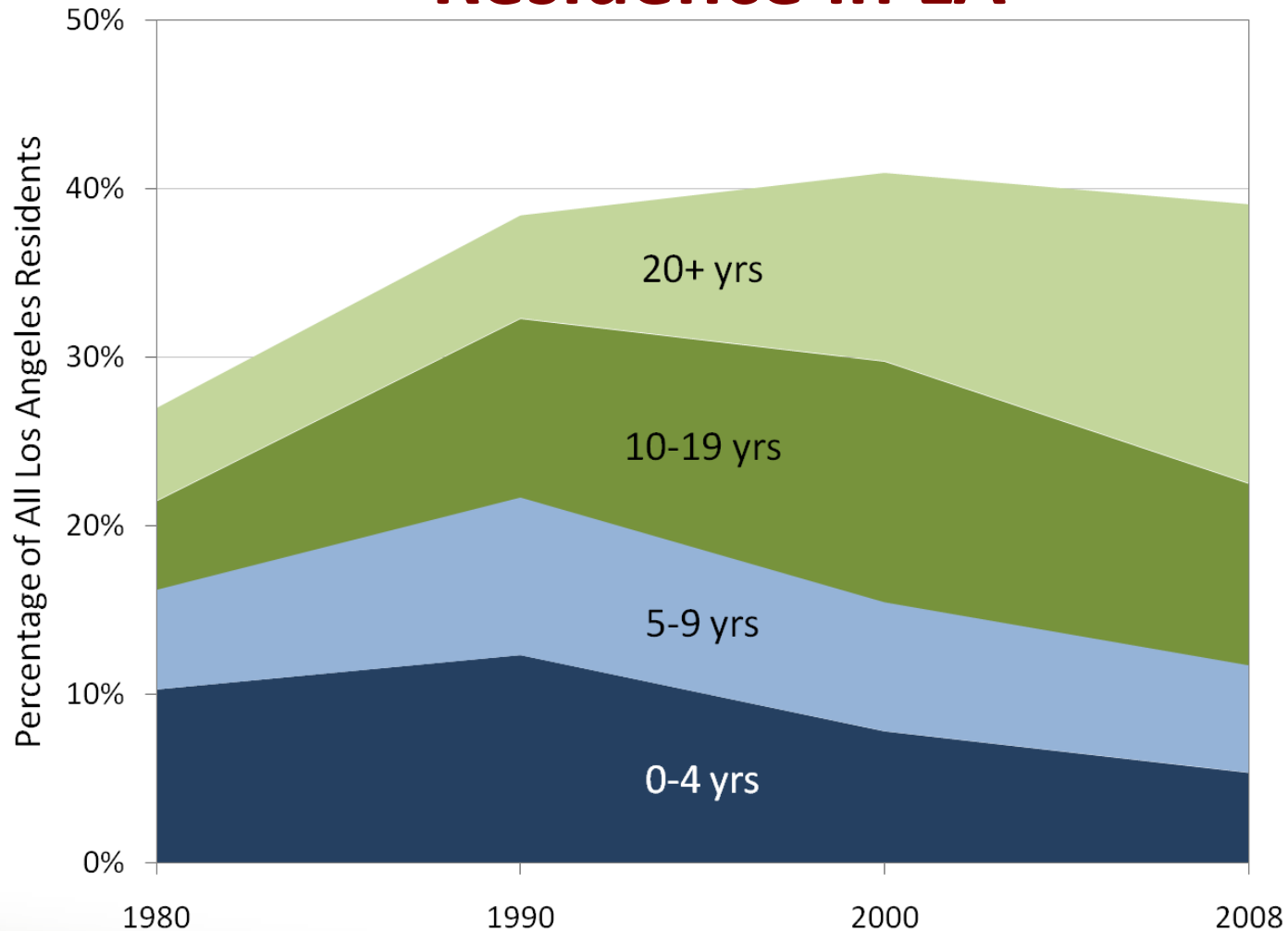
Annual Immigration Declining in Traditional Gateways



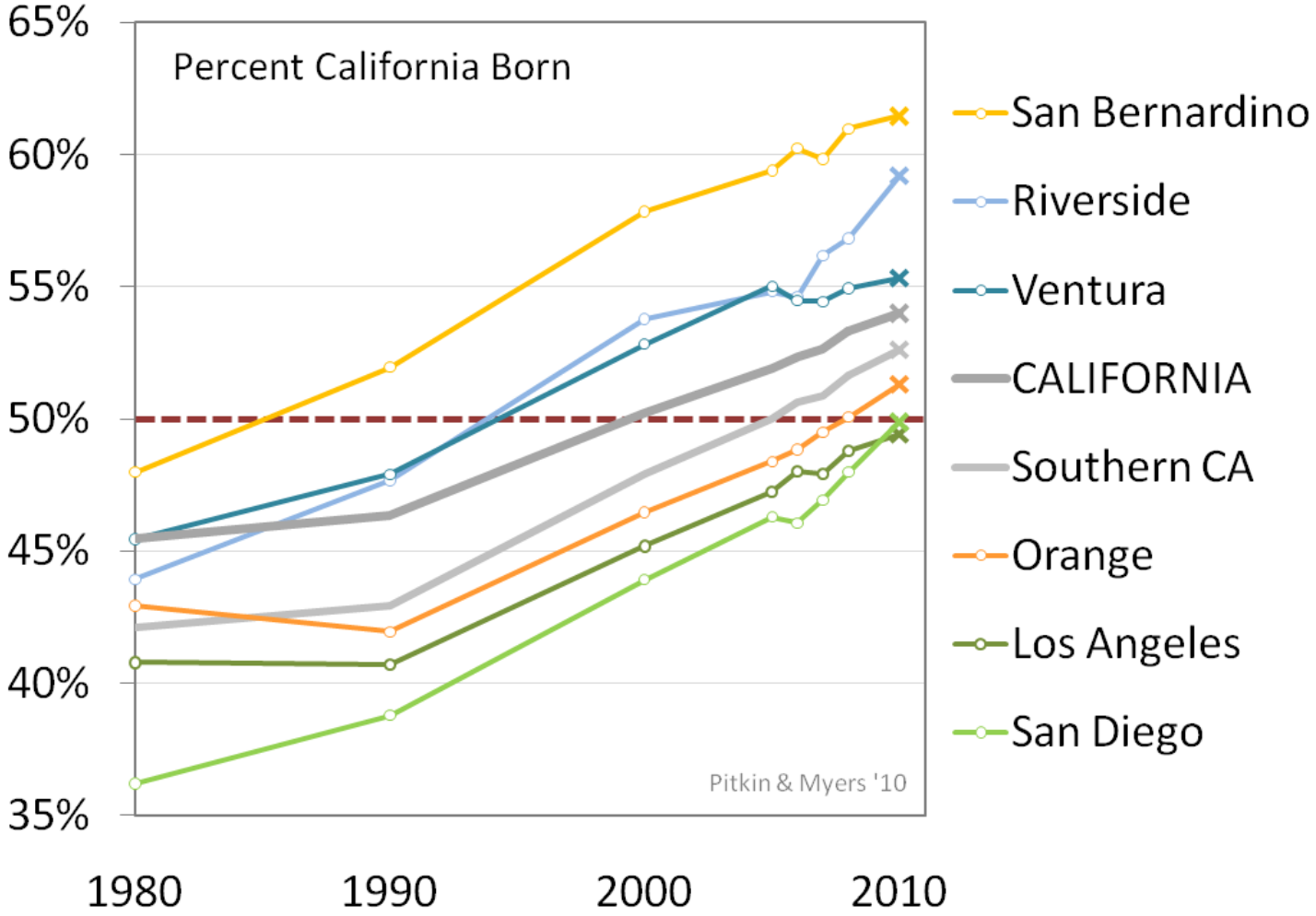
Percent Foreign Born



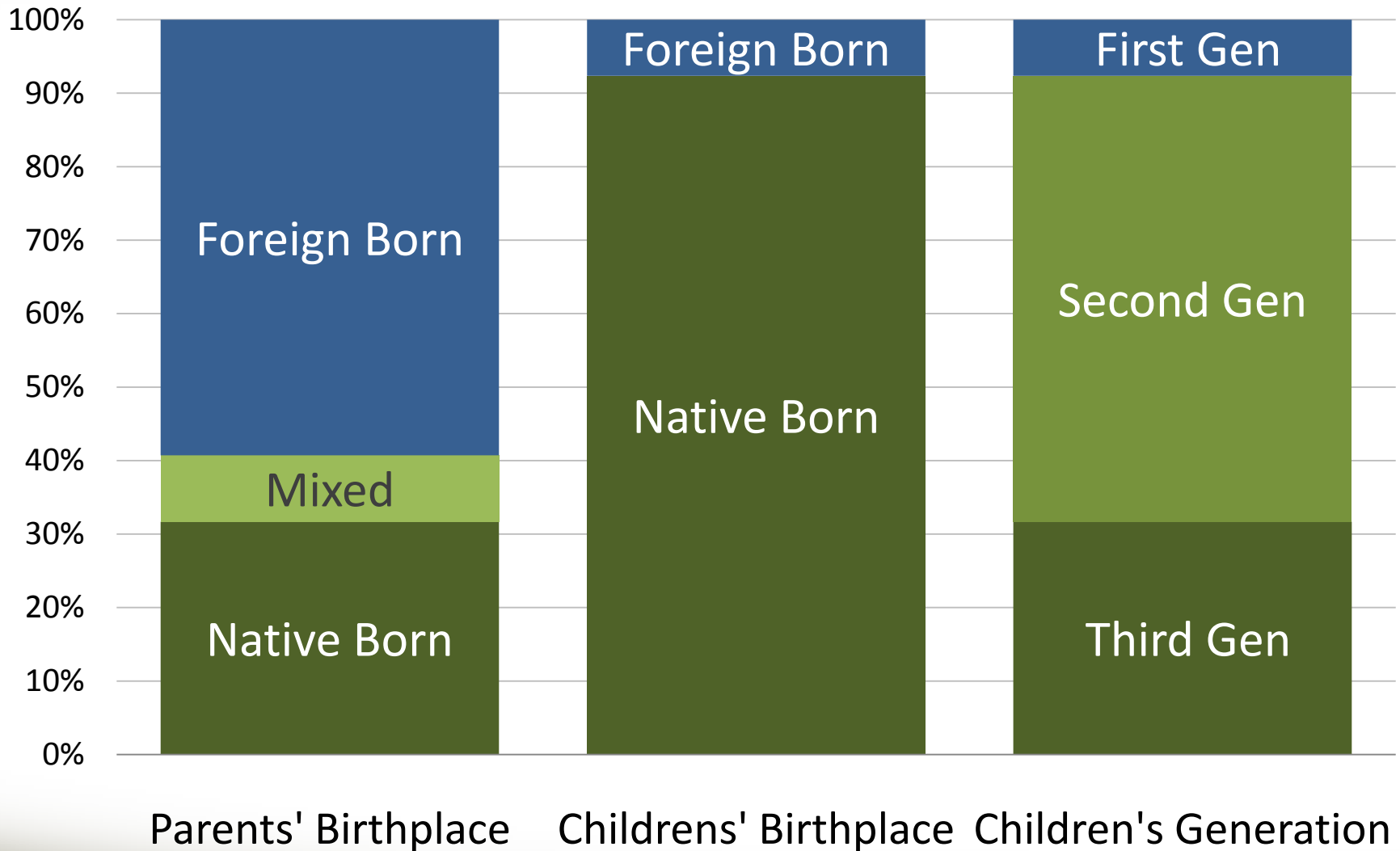
Foreign Born Population by Length of Residence in LA



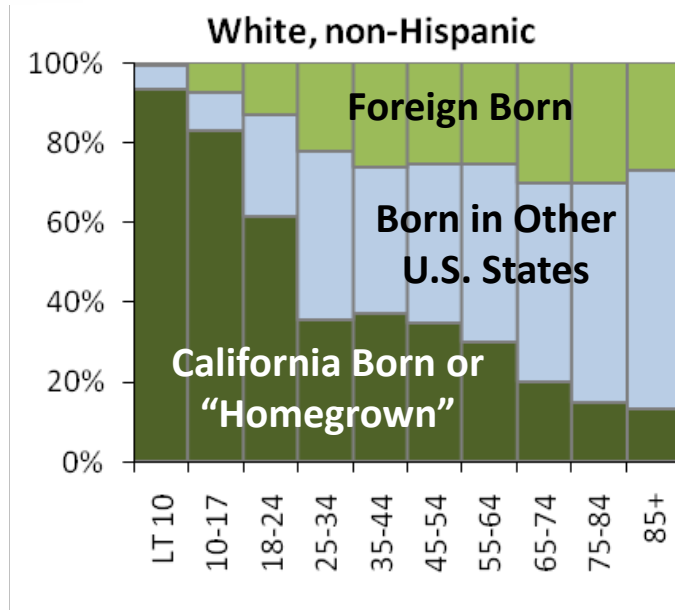
Percent California-Born Homegrown



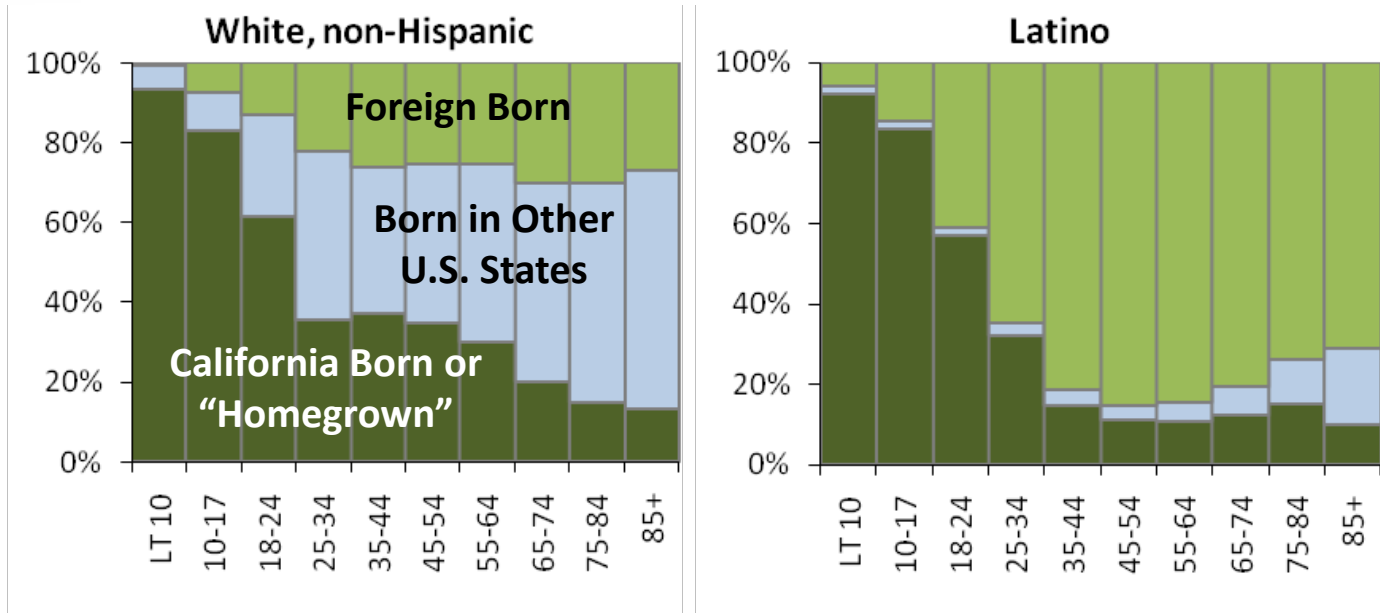
Children Under 18 in Los Angeles City, 2008



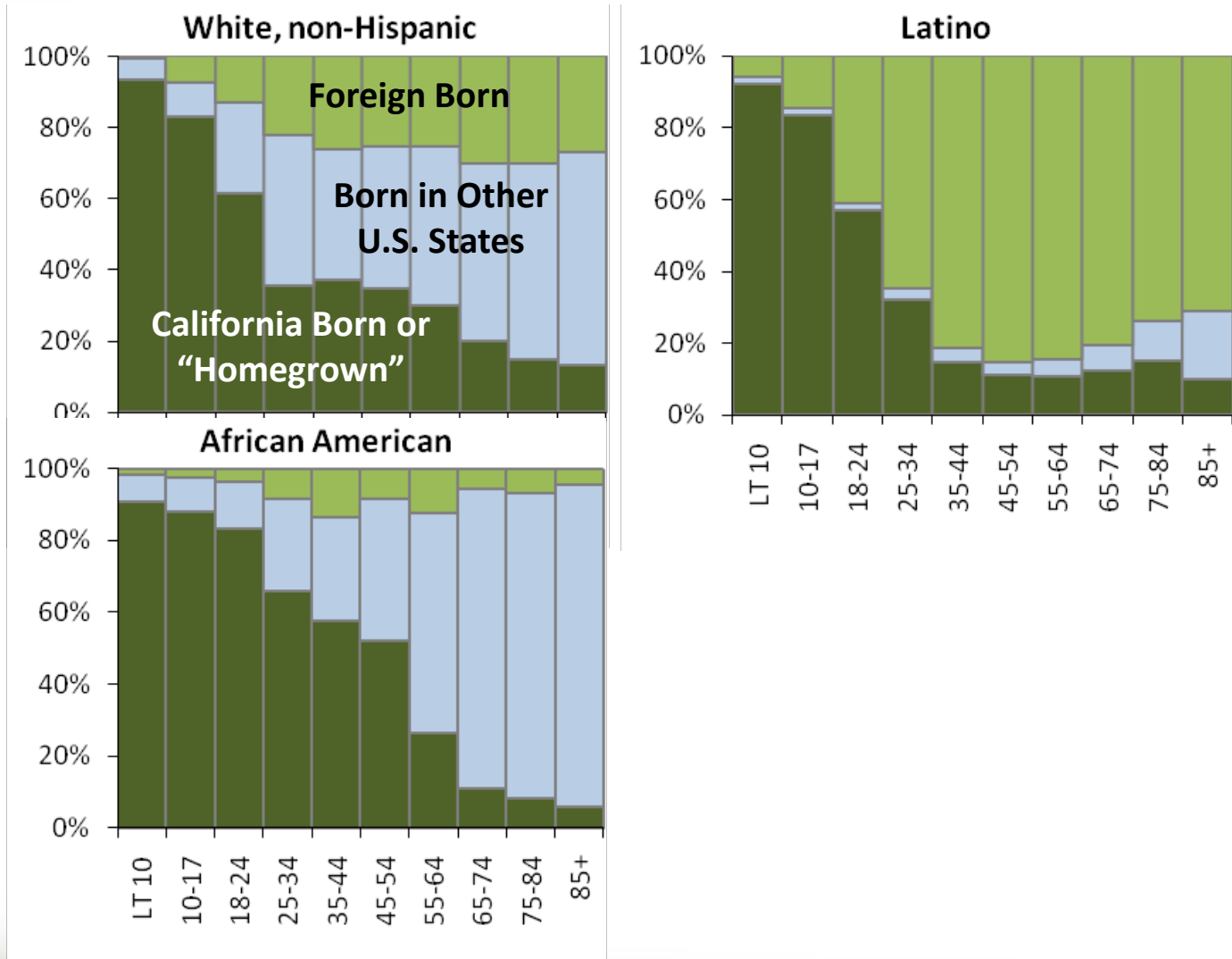
Birthplace by Age & Race in LA City, 2008



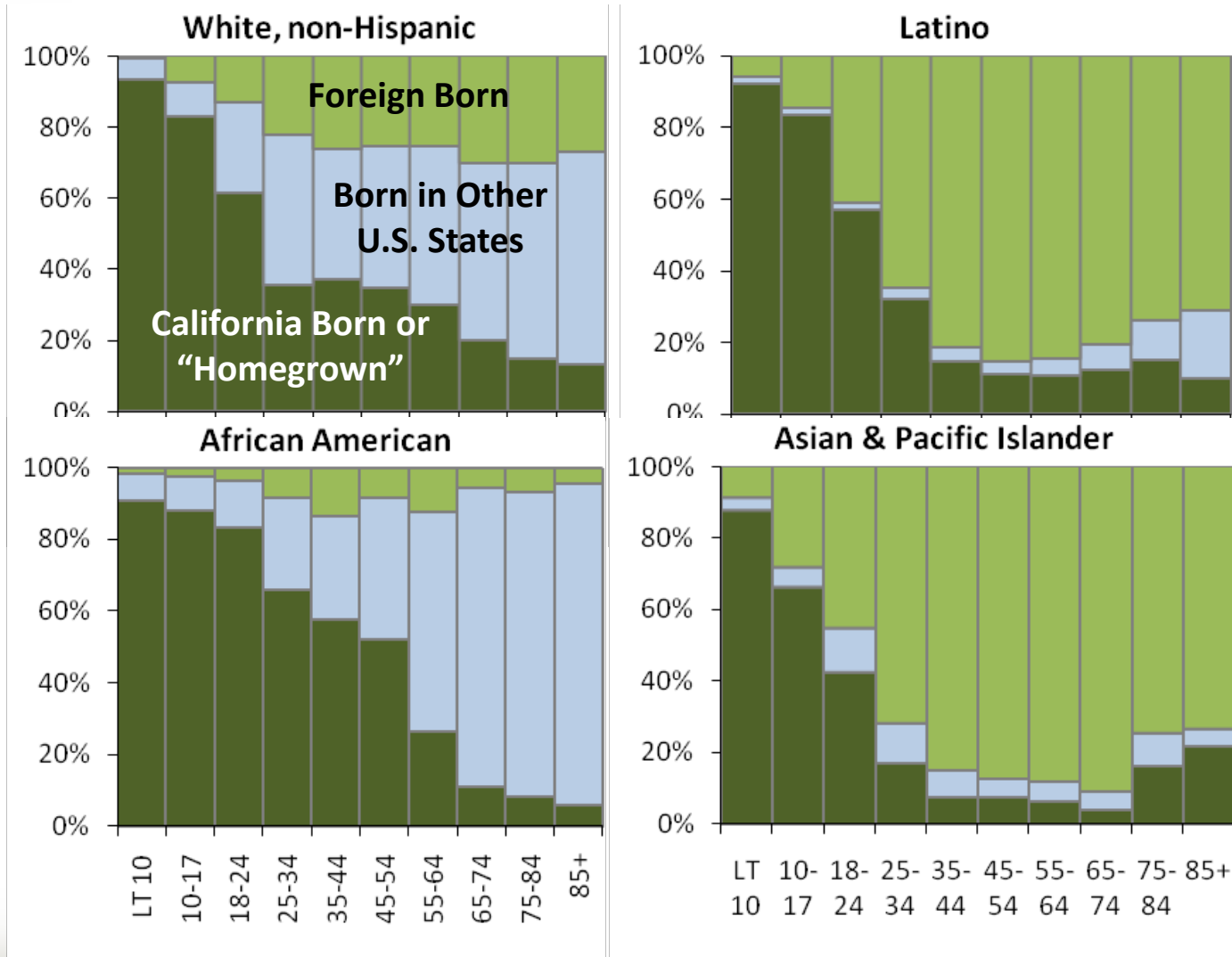
Birthplace by Age & Race in LA City, 2008



Birthplace by Age & Race in LA City, 2008



Birthplace by Age & Race in LA City, 2008



The Two Demographic Narratives

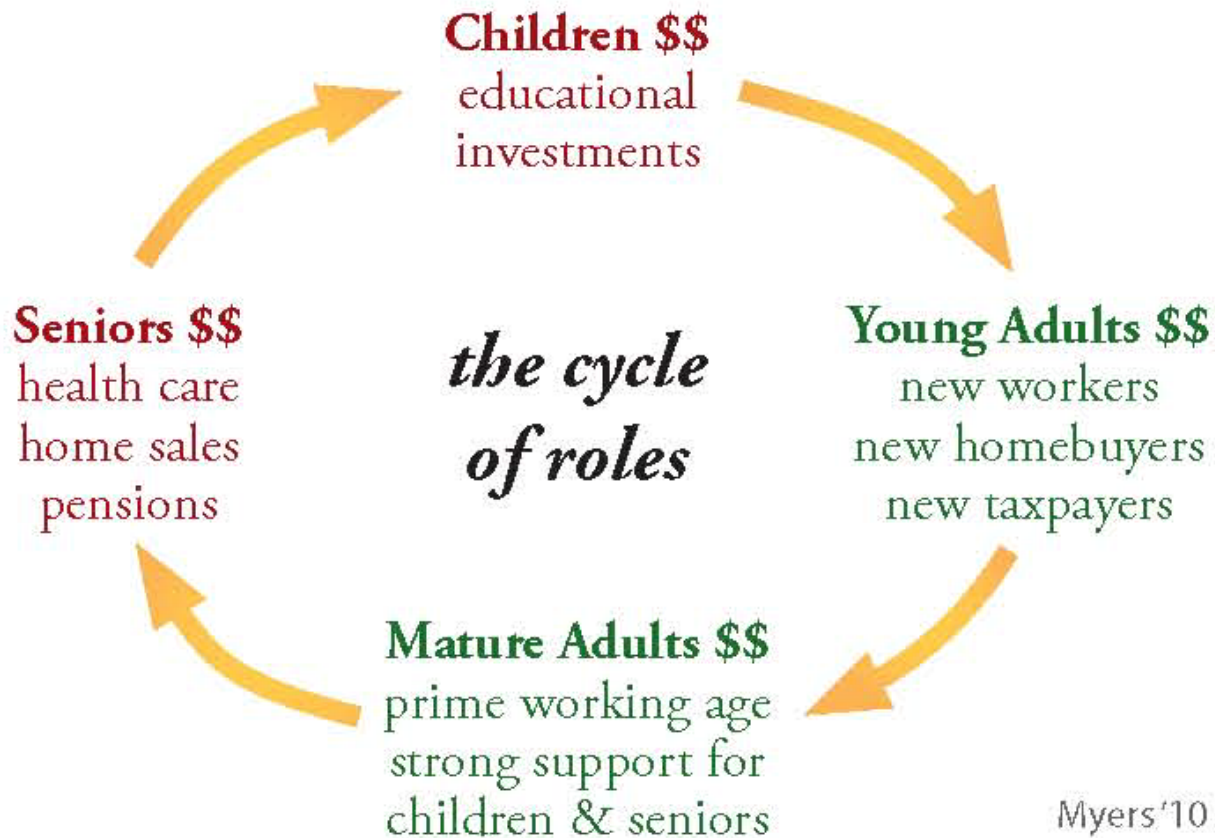
The Old Story

- Whites Declining in California
- Coming Ethnic Political Majority
- Accelerating Immigration
- Too Much Population Growth
- Migration Swamping the State

The New Story

- Steady Number of Whites at 16 Million
- No Majority – instead a Multi-Ethnic Partnership
- Declining Immigration
- Balancing the Baby Boomer Tsunami
- Rise of the New Homegrown Majority

Intergenerational Connections



Thank You

Dowell Myers

<dowell@usc.edu>

For updated information
search for “popdynamics”

Caution

All figures reported for
2010 and later are
estimates as of December
2010 and are **subject to
revision** once full 2010
census data are released
and forecasts are revised