

# Other Voting Options Before Election Day...

## 1) ...by Vote By Mail Ballot



### MAKE YOUR MARK!

Use a blue or black ink pen to fill inside the ballot bubbles.



### RETURN THE BALLOT.

Enclose voted ballot inside secrecy sleeve and place in lavender return envelope. **Be sure to sign, seal and place a stamp on the return envelope.**

### CHECK YOUR BALLOT!

**DO NOT** mark outside the bubbles or make any other markings on the ballot card.



## LOS ANGELES COUNTY BOARD OF SUPERVISORS

Gloria Molina  
First District

Mark Ridley-Thomas  
Second District

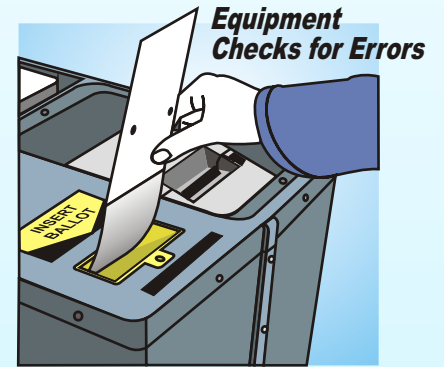
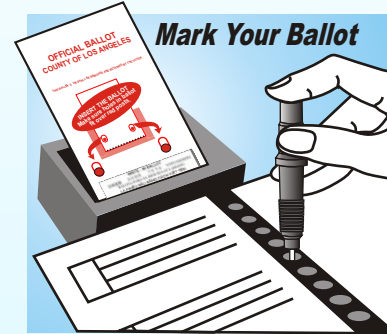
Zev Yaroslavsky  
Third District

Don Knabe  
Fourth District

Michael D. Antonovich  
Fifth District

Dean C. Logan  
Registrar-Recorder/County Clerk

# *plus* InkaVote is here *To protect your vote*



Also available: **AudioBallot**



# VOTE

Los Angeles County Registrar-Recorder/County Clerk

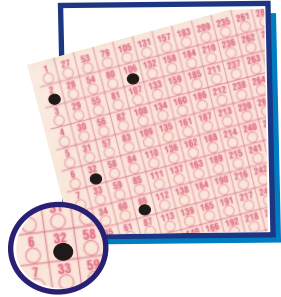
12400 Imperial Highway, Norwalk, CA 90650

(562)466-1323

[www.lavote.net](http://www.lavote.net)

# InkaVote *Plus*...

## What Is InkaVote?



InkaVote is an optical scan voting system.

Voters use an ink marking device to fill in bubbles on the ballot that correspond with vote selections.

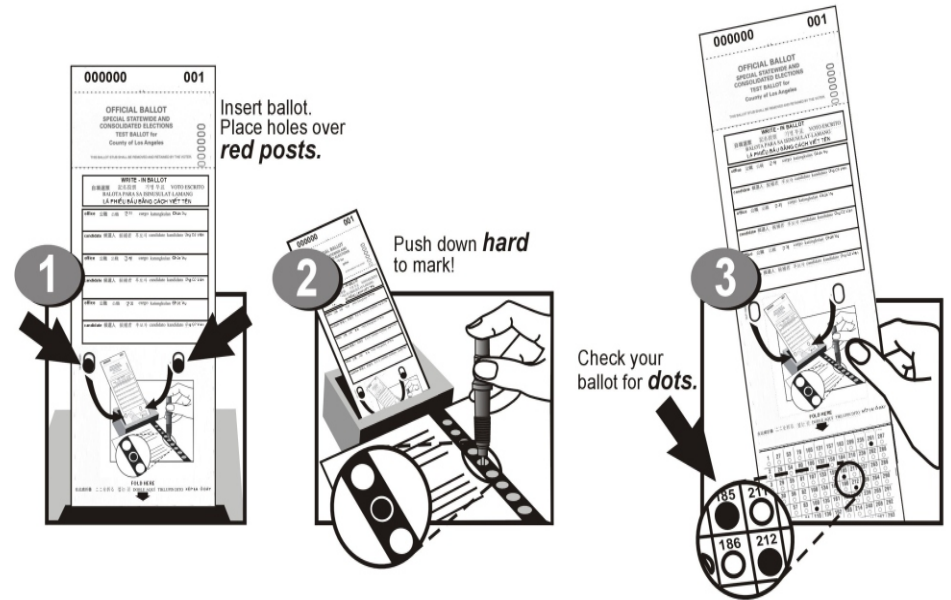
## Why The *Plus*?

InkaVote *Plus* is an enhancement to the InkaVote paper ballot voting system used in Los Angeles County elections since November 2003. It consists of three parts:

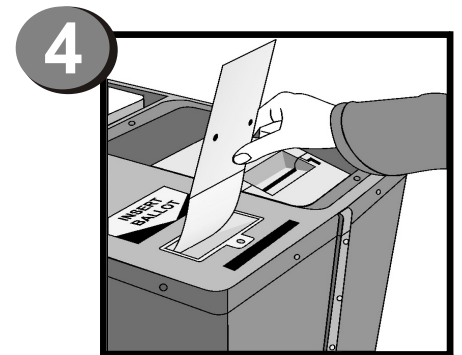
1. The **voting device** and special ink marker attached. Each voter inserts the ballot into the device securing the ballot over the red pins and then “inks” the ballot card.
2. The **precinct ballot reader (PBR)** sits on top of the ballot box. The PBR checks ballots for overvotes (more selections than a contest allows) and for completely blank ballots and notifies the voter. This provides a second chance to correct errors.
3. An **audio ballot booth** is available to assist voters with special needs. Voters who are disabled, including those who are blind or visually impaired, may vote privately and independently using an audio headset and a simple keypad. Also, voters whose main language is not English may choose to vote an audio ballot in Chinese (Mandarin or Cantonese), Japanese, Korean, Spanish, Tagalog/Filipino or Vietnamese.

## How to use

# InkaVote *Plus* on Election Day



Insert ballot into **InkaVote Plus**. It checks for Errors!



**Audio equipment also available to assist voters with disabilities or those with alternative language needs!**