




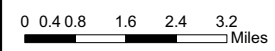




**2008 Presidential  
General Election**

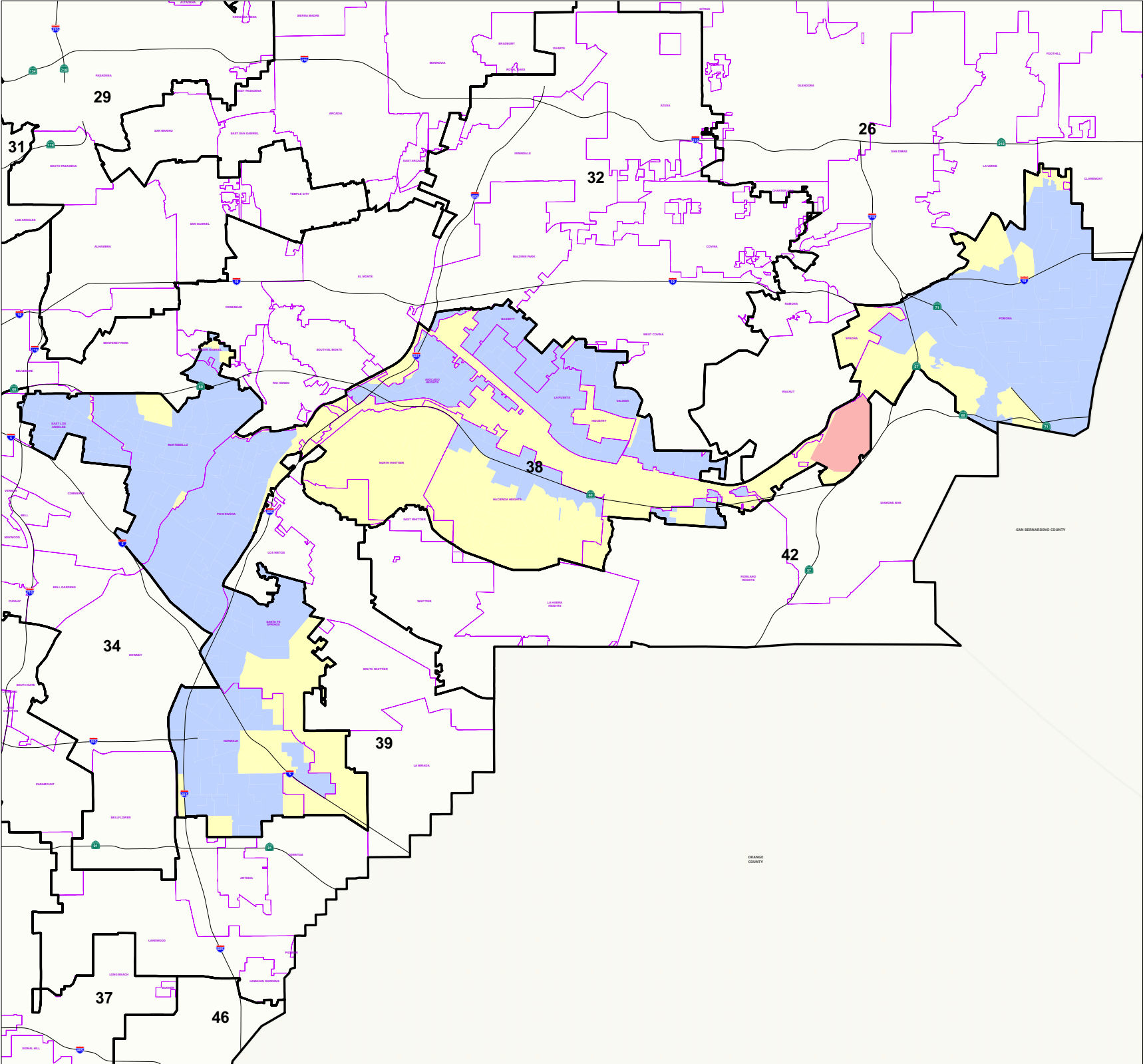
**38th Congressional District  
Votes for President  
over 50% by Election Precinct**

- Legend**
-  Congressional District
  -  Communities
  - Votes for President**
    -  Other
    -  Obama over 50%
    -  McCain over 50%



THIS MAP IS SUBJECT TO CHANGE WITHOUT NOTICE  
CONTACT REGISTRAR-RECORDER/COUNTY CLERK  
PRECINCTING SECTION, 12400 IMPERIAL HIGHWAY  
NORWALK, CA 90650 TEL. No. (562) 462-2473








Data contained in this map is reproduced in whole or part  
from the Thomas Brothers Maps Digital Database. This  
map is copyrighted and reproduced with permission  
granted by Thomas Brothers Maps. All rights reserved.

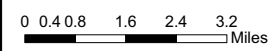




**2008 Presidential  
General Election**

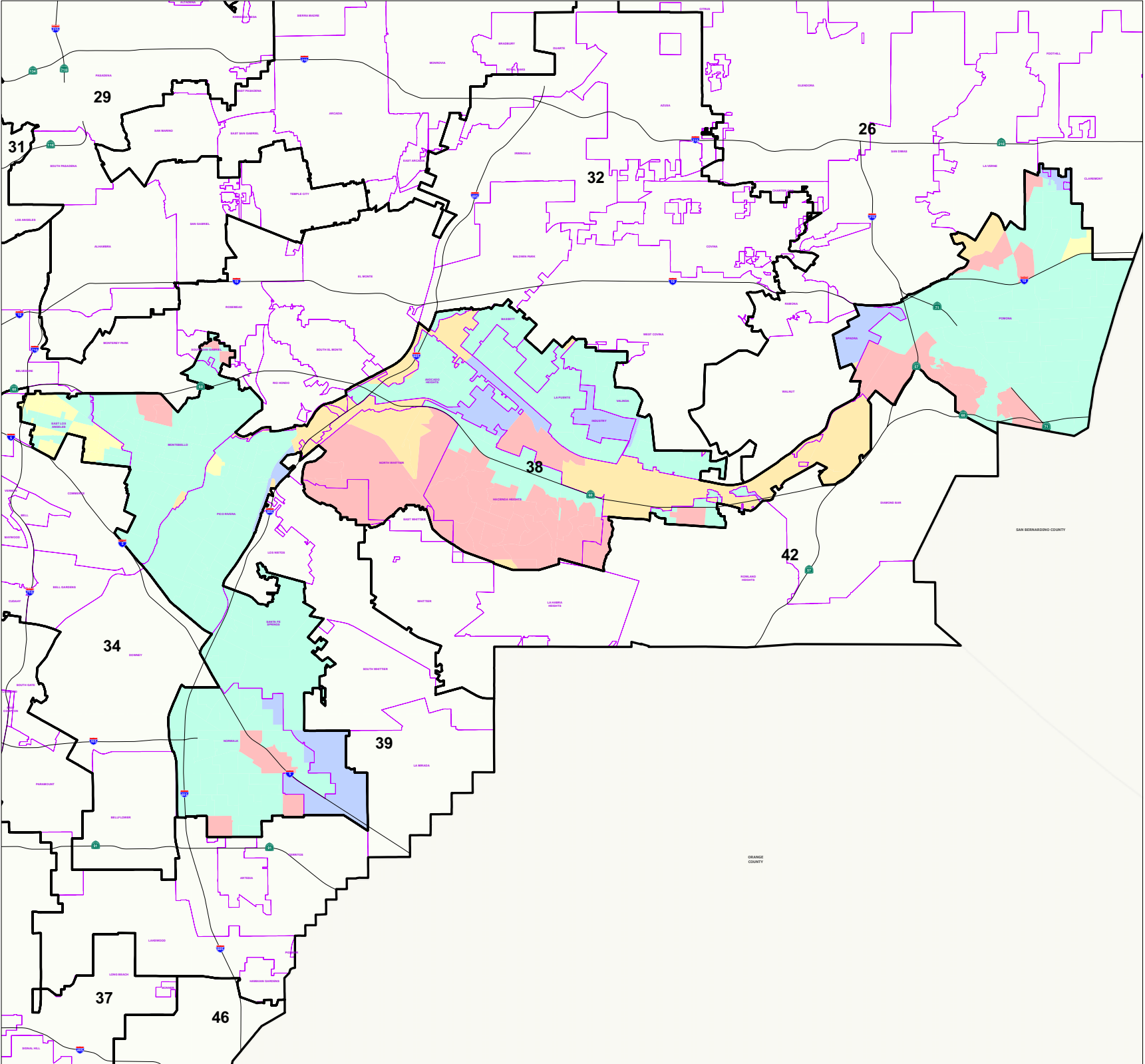
**38th Congressional District  
Votes for Obama  
by Election Precinct**

- Legend**
-  Congressional District
  -  Communities
  - Votes for President**
  -  0 Percent
  -  1 - 25%
  -  26 - 50%
  -  51 - 75%
  -  76 - 100%



THIS MAP IS SUBJECT TO CHANGE WITHOUT NOTICE  
CONTACT REGISTRAR-RECORDER/COUNTY CLERK  
PRECINCTING SECTION, 12400 IMPERIAL HIGHWAY  
NORWALK, CA 90650 TEL. No. (562) 462-2473

Data contained in this map is reproduced in whole or part  
from the Thomas Brothers Maps Digital Database. This  
map is copyrighted and reproduced with permission  
granted by Thomas Brothers Maps. All rights reserved.





**2008 Presidential  
General Election**

**38th Congressional District  
Votes for McCain  
by Election Precinct**

**Legend**

— Congressional District

— Communities

**Votes for President**

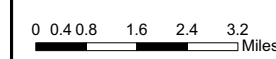
0 Percent

1 - 25%

26 - 50%

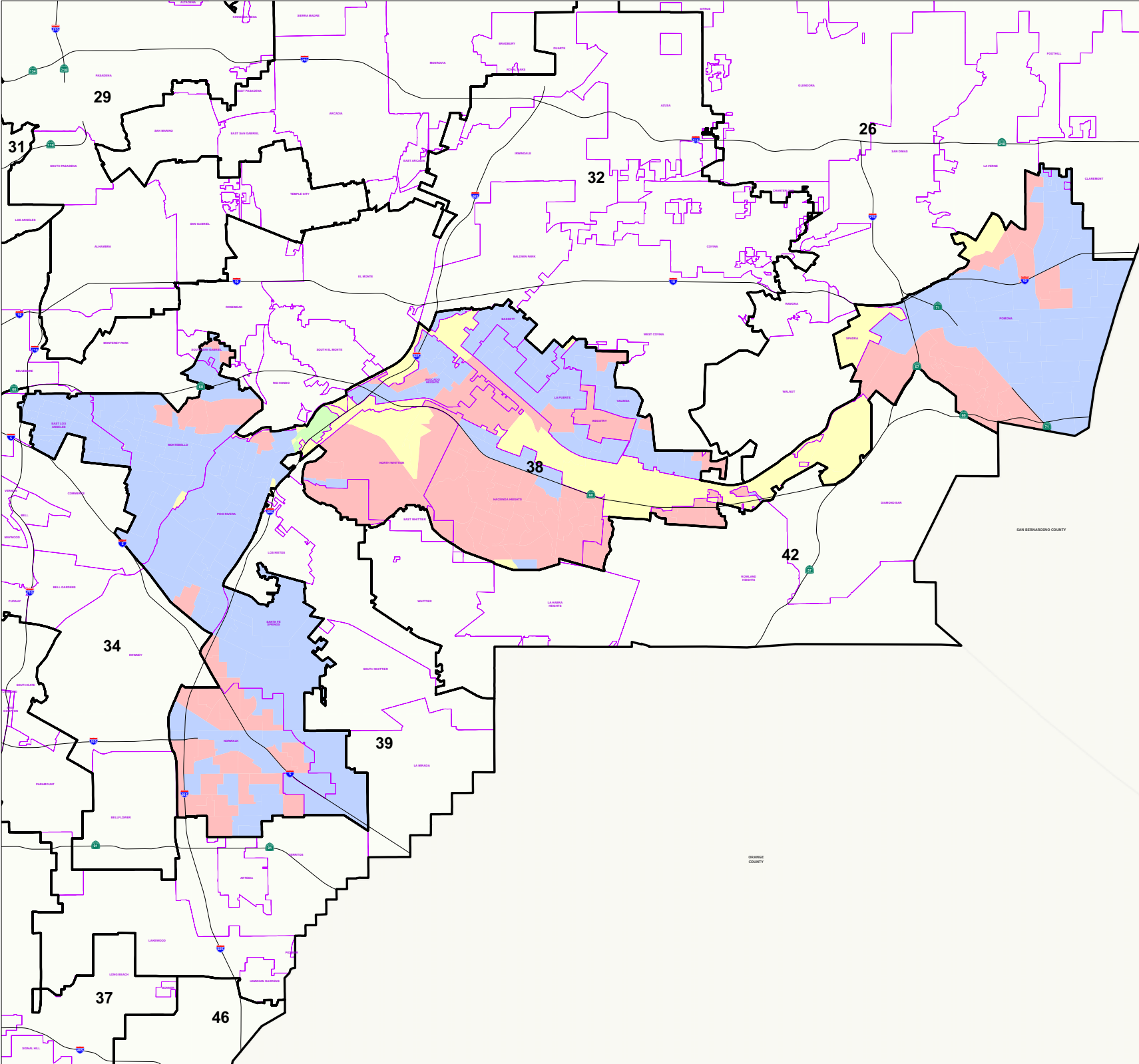
51 - 75%

76 - 100%



THIS MAP IS SUBJECT TO CHANGE WITHOUT NOTICE  
CONTACT REGISTRAR-RECORDER/COUNTY CLERK  
PRECINCTING SECTION, 12400 IMPERIAL HIGHWAY  
NORWALK, CA 90650 TEL. No. (562) 462-2473

Data contained in this map is reproduced in whole or part  
from the Thomas Brothers Maps Digital Database. This  
map is copyrighted and reproduced with permission  
granted by Thomas Brothers Maps. All rights reserved.











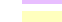
**2008 Presidential  
General Election**

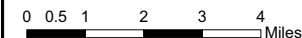
**38th Congressional District  
New Registered Voters  
Age 18-29 by Election Precinct**

**Legend**

-  Congressional District
-  Communities

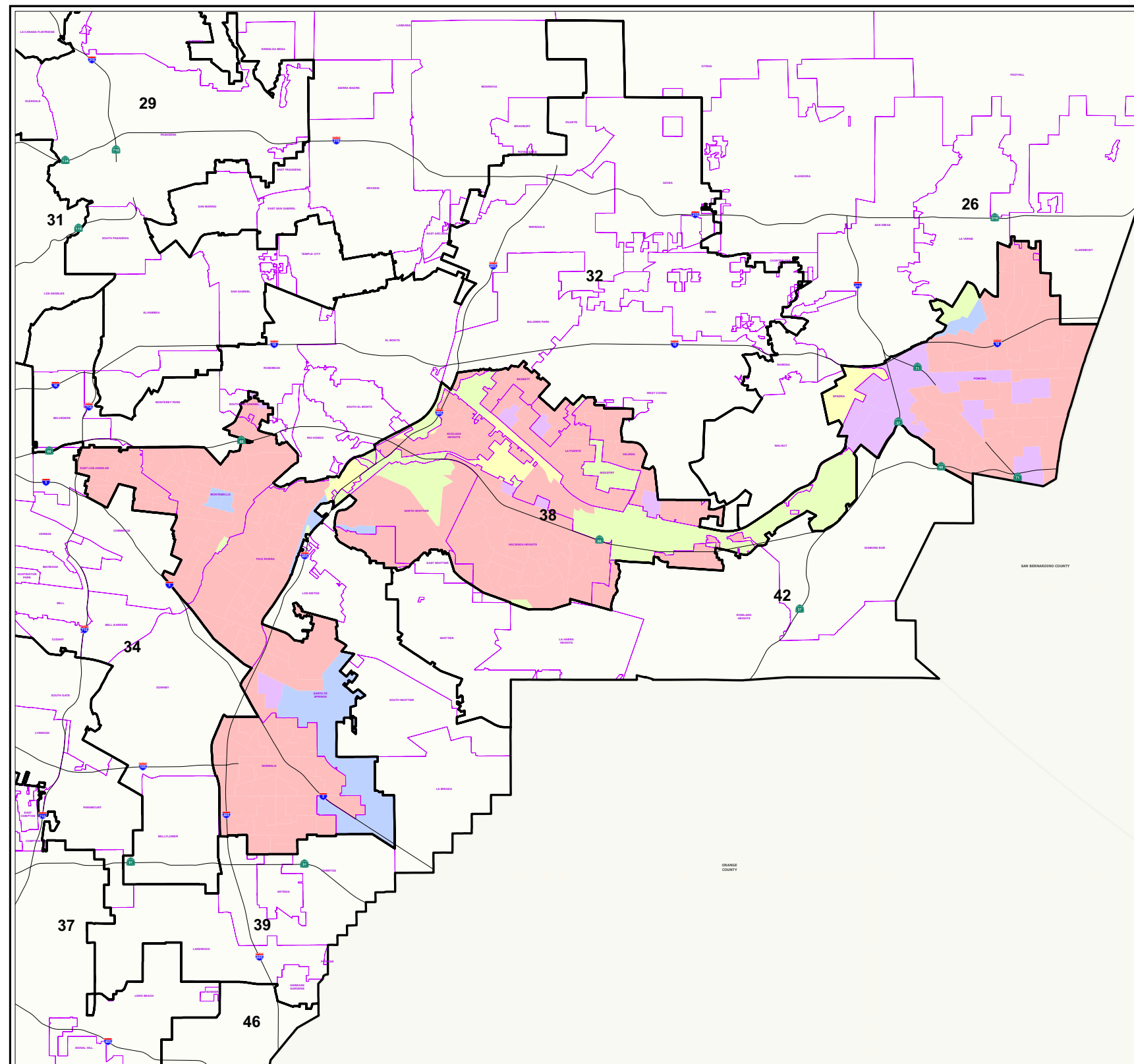
**New Registered Voters by Age 18-29**

-  0 Percent
-  1-25%
-  26-50%
-  51-75%
-  76-100%



THIS MAP IS SUBJECT TO CHANGE WITHOUT NOTICE  
CONTACT REGISTRAR-RECORDER/COUNTY CLERK  
PRECINCTING SECTION, 12400 IMPERIAL HIGHWAY  
NORWALK, CA 90650 TEL. No. (562) 462-2473

Data contained in this map is reproduced in whole or part  
from the Thomas Brothers Maps Digital Database. This  
map is copyrighted and reproduced with permission  
granted by Thomas Brothers Maps. All rights reserved.













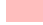
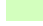

**2008 Presidential  
General Election**

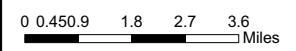
**38th Congressional District  
New Registrants Age 40-49  
by Election Precinct**

**Legend**

-  Congressional District
-  Communities

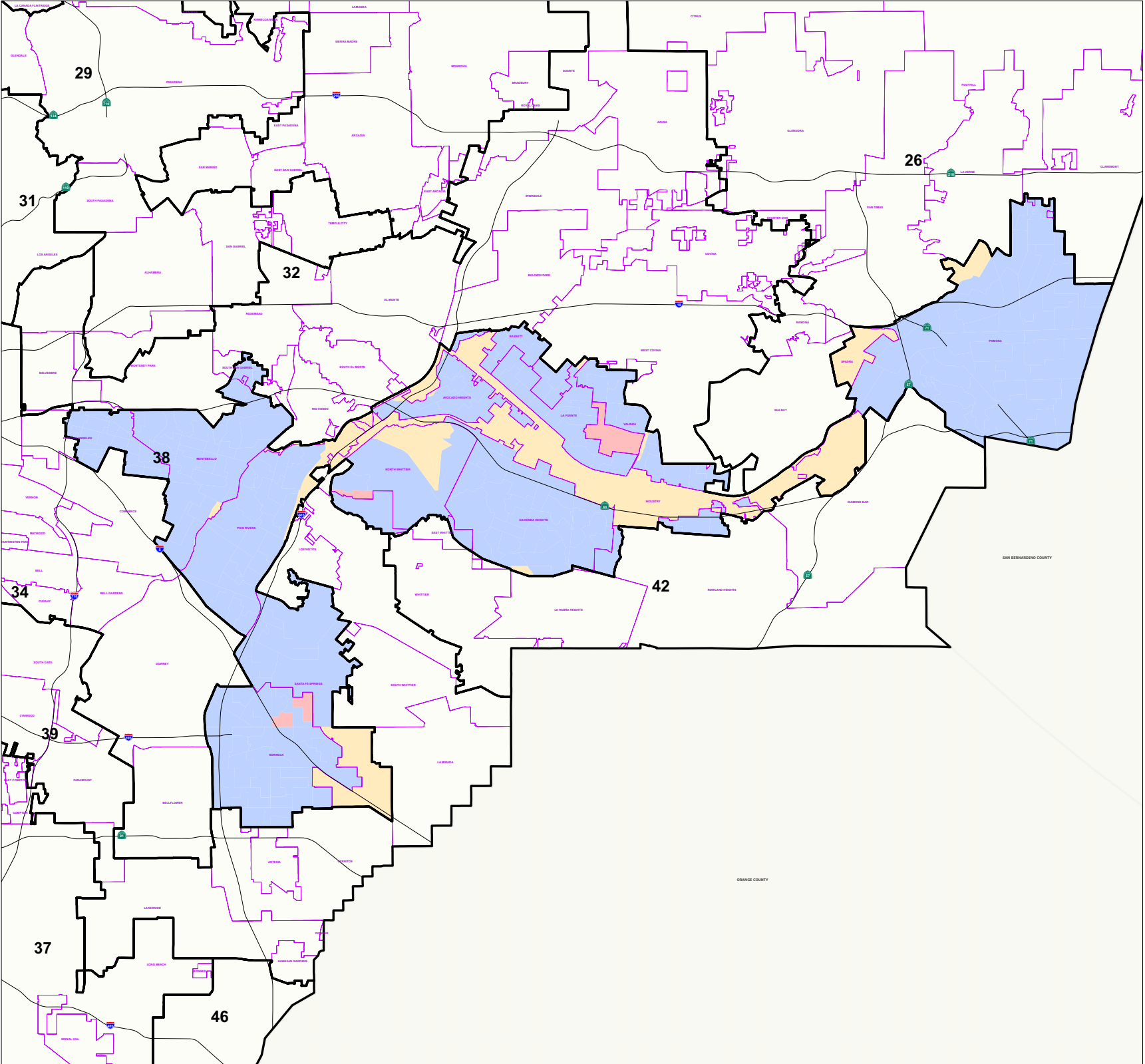
**New Registrants Age 40-49**

-  0 Percent
-  1-25%
-  26-50%
-  51-75%
-  76-100%



THIS MAP IS SUBJECT TO CHANGE WITHOUT NOTICE  
CONTACT REGISTRAR-RECORDER/COUNTY CLERK  
PRECINCTING SECTION, 12400 IMPERIAL HIGHWAY  
NORWALK, CA 90650 TEL. No. (562) 462-2473

Data contained in this map is reproduced in whole or part  
from the Thomas Brothers Maps Digital Database. This  
map is copyrighted and reproduced with permission  
granted by Thomas Brothers Maps. All rights reserved.






**2008 Presidential  
General Election**


**34th Congressional District  
New Registrants Age 50-59  
by Election Precinct**


**Legend**


 Congressional District


 Communities

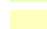
**New Registrants Age 50-59**

 0 Percent

 1-25%

 26-50%

 51-75%

 76-100%

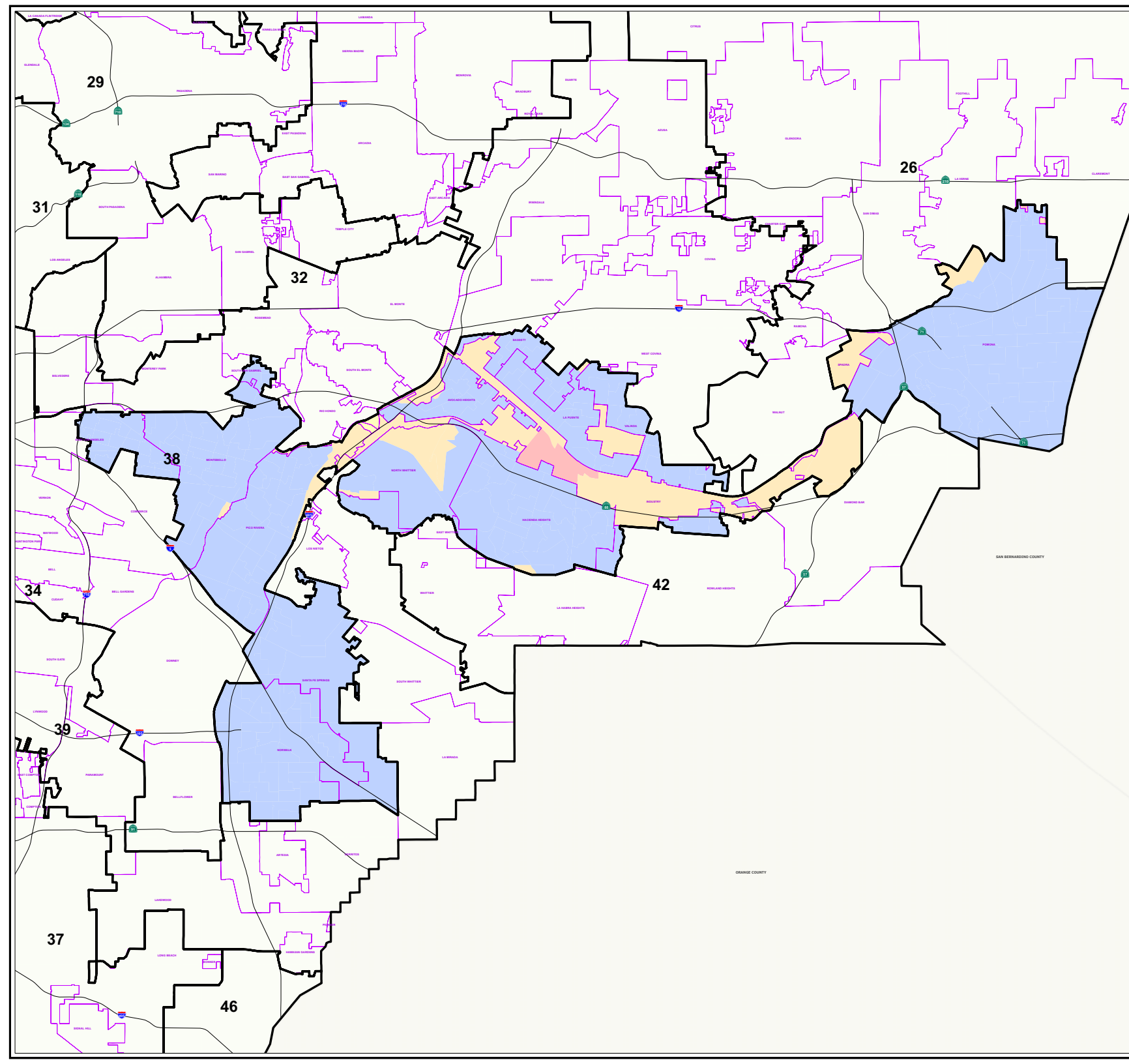


0 0.450.9 1.8 2.7 3.6  
Miles

THIS MAP IS SUBJECT TO CHANGE WITHOUT NOTICE  
CONTACT REGISTRAR-RECORDER/COUNTY CLERK  
PRECINCTING SECTION, 12400 IMPERIAL HIGHWAY  
NORWALK, CA 90650 TEL. No. (562) 462-2473

Data contained in this map is reproduced in whole or part  
from the Thomas Brothers Map Digital Database. This  
map is copyrighted and reproduced with permission  
granted by Thomas Brothers Maps. All rights reserved.

Thursday, January 8, 2009






**2008 Presidential  
General Election**


**38th Congressional District  
New Registrants Age 60-69  
by Election Precinct**


**Legend**


 Congressional District

 Communities

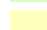
**New Registrants Age 60-69**

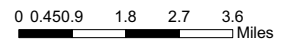
 0 Percent

 1-25%

 26-50%

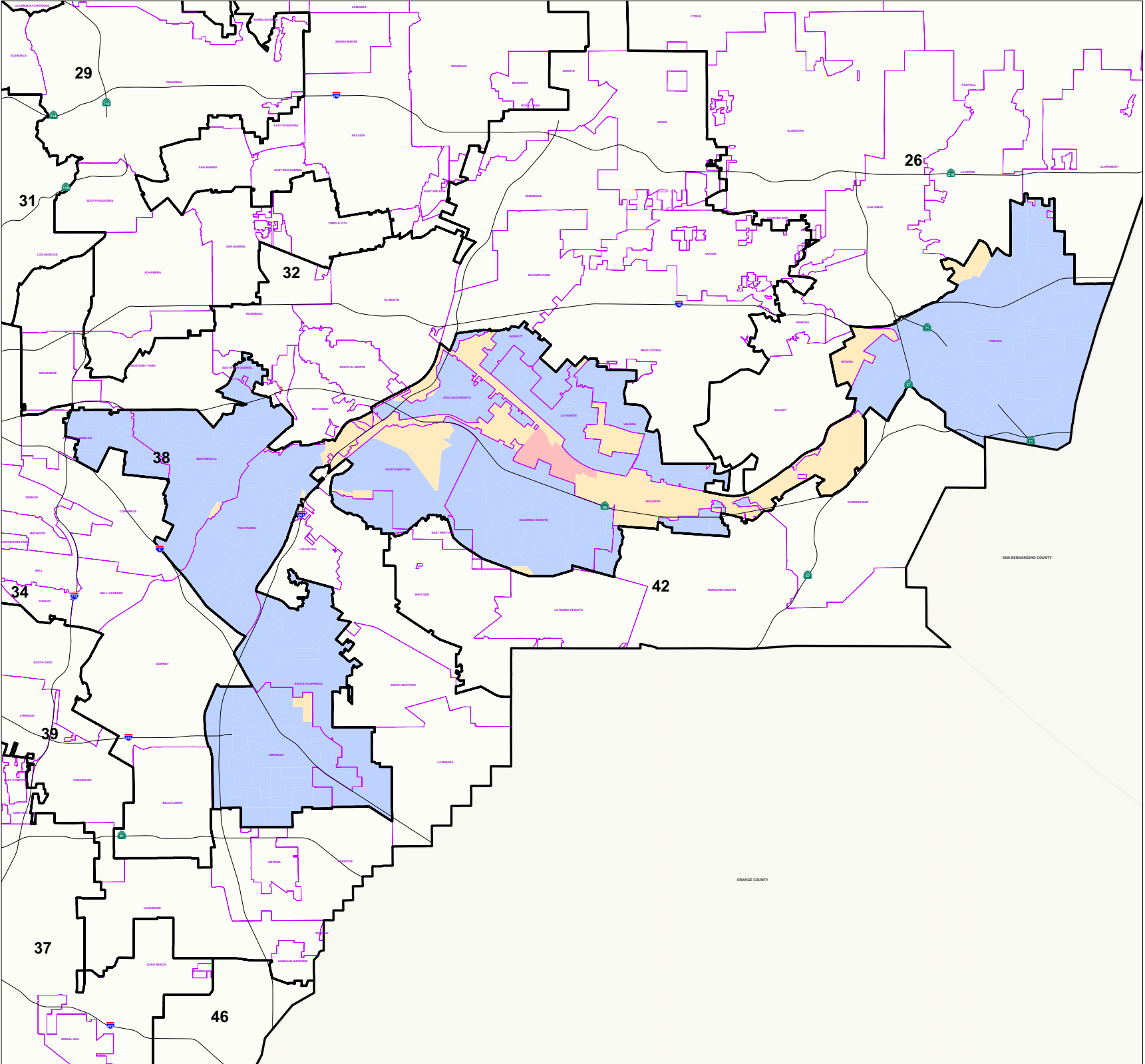
 51-75%

 76-100%



THIS MAP IS SUBJECT TO CHANGE WITHOUT NOTICE  
CONTACT REGISTRAR-RECORDER/COUNTY CLERK  
PRECINCTING SECTION, 12400 IMPERIAL HIGHWAY  
NORWALK, CA 90650 TEL. No. (562) 462-2473

Data contained in this map is reproduced in whole or part  
from the Thomas Brothers Maps Digital Database. This  
map is copyrighted and reproduced with permission  
granted by Thomas Brothers Maps. All rights reserved.








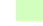



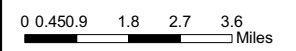
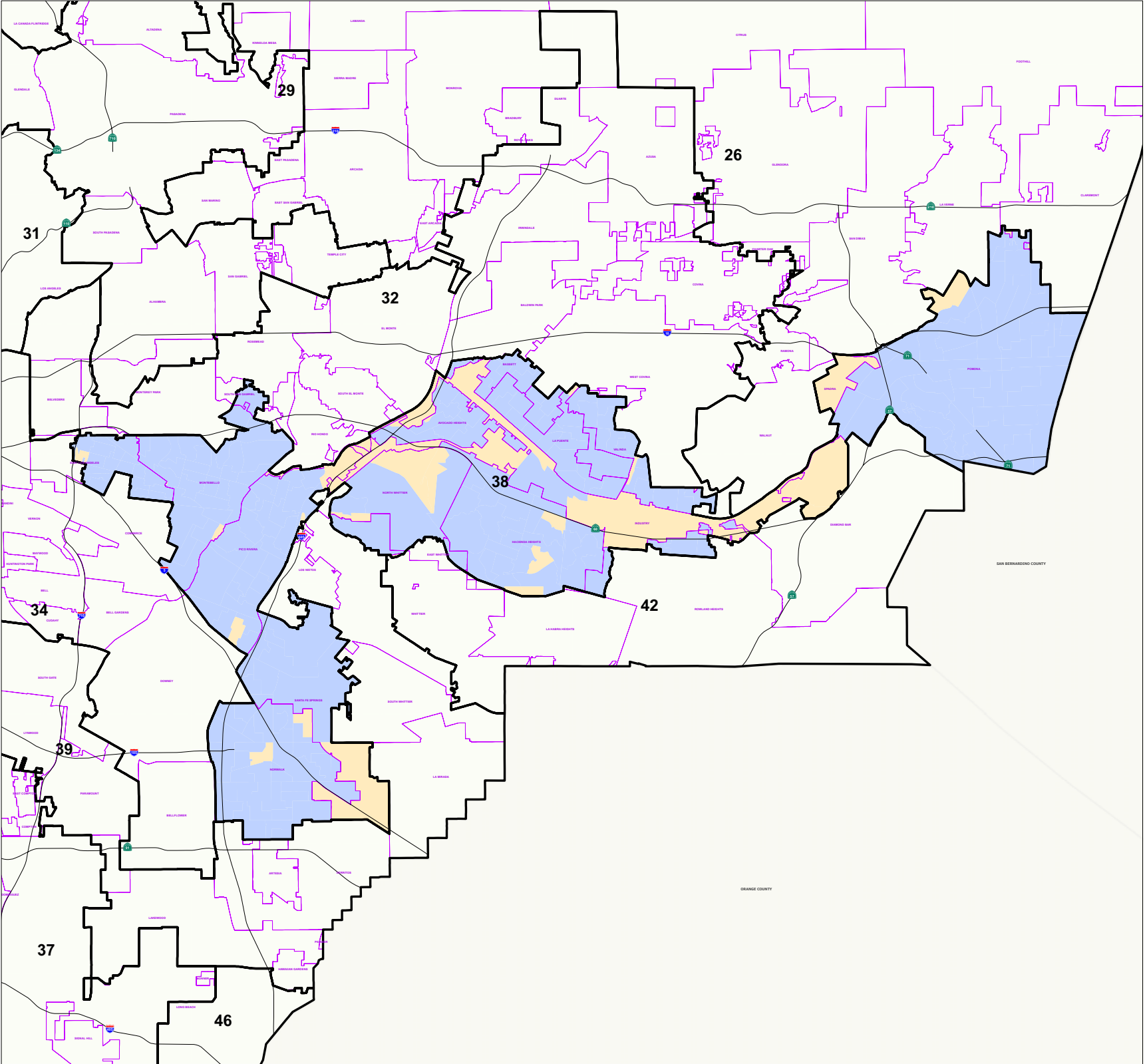
**2008 Presidential  
General Election**

**38th Congressional District  
New Registrants Age over 70  
by Election Precinct**

**Legend**

-  Congressional District
-  Communities

- New Registrants Age over 70**
-  0 Percent
  -  1-25%
  -  26-50%
  -  51-75%
  -  76-100%



THIS MAP IS SUBJECT TO CHANGE WITHOUT NOTICE  
CONTACT REGISTRAR-RECORDER/COUNTY CLERK  
PRECINCTING SECTION, 12400 IMPERIAL HIGHWAY  
NORWALK, CA 90650 TEL. No. (562) 462-2473

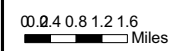
Data contained in this map is reproduced in whole or part  
from the Thomas Brothers Maps Digital Database. This  
map is copyrighted and reproduced with permission  
granted by Thomas Brothers Maps. All rights reserved.



**2008 Presidential  
General Election**

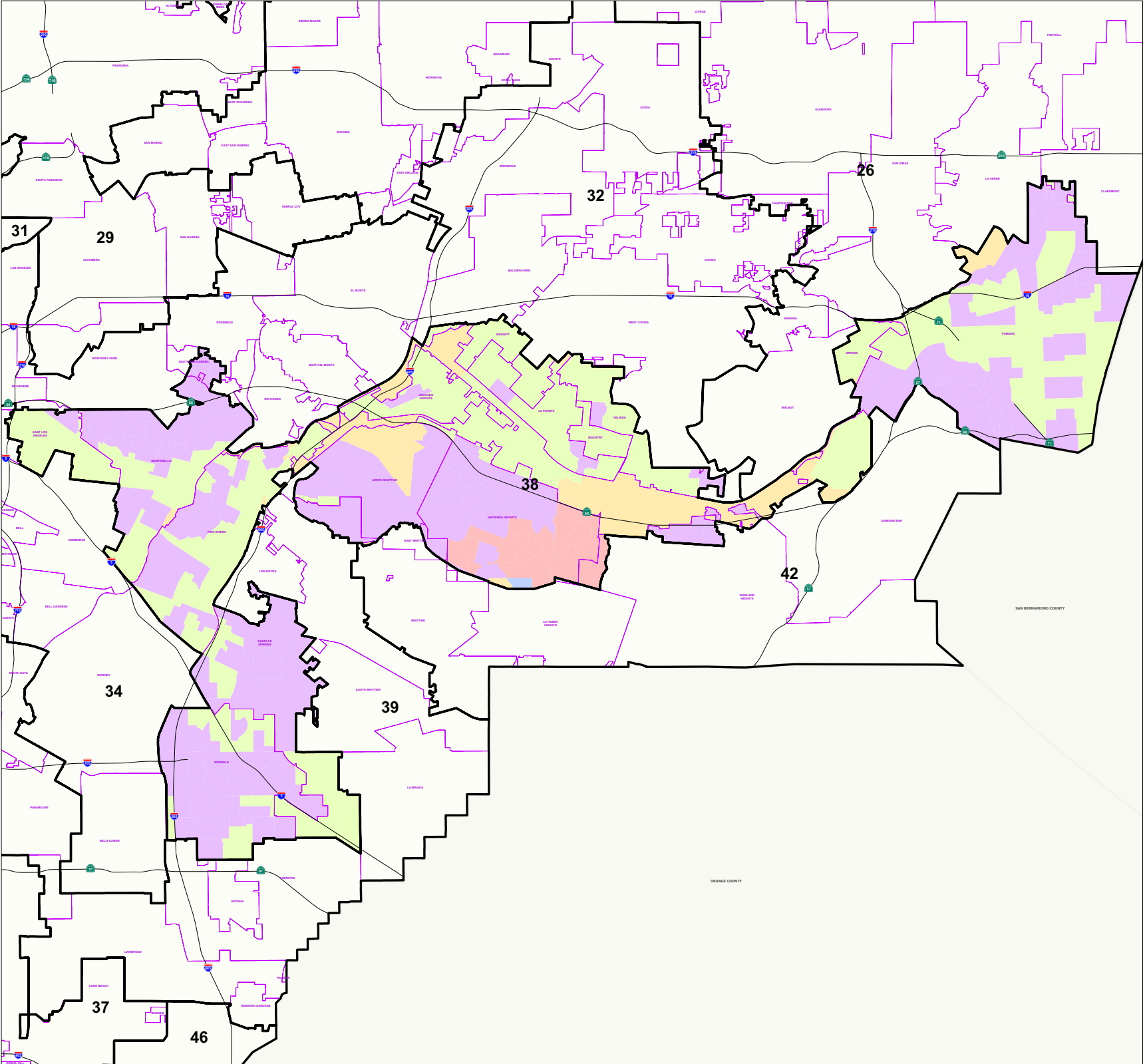
**38th Congressional District  
Percentage of Votes at Poll  
by Election Precinct**

- Legend**
- Congressional District
  - Communities
- Percent Votes Cast at Poll**
- 0 Percent
  - 1-25%
  - 26-50%
  - 51-75%
  - 76-100%



THIS MAP IS SUBJECT TO CHANGE WITHOUT NOTICE  
CONTACT REGISTRAR-RECORDER/COUNTY CLERK  
PRECINCTING SECTION, 12400 IMPERIAL HIGHWAY  
NORWALK, CA 90650 TEL. No. (562) 462-2473

Data contained in this map is reproduced in whole or part  
from the Thomas Brothers Maps Digital Database. This  
map is copyrighted and reproduced with permission  
granted by Thomas Brothers Maps. All rights reserved.












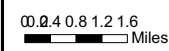


**2008 Presidential  
General Election**

**38th Congressional District  
Percentage of Mail In Votes  
by Election Precinct**

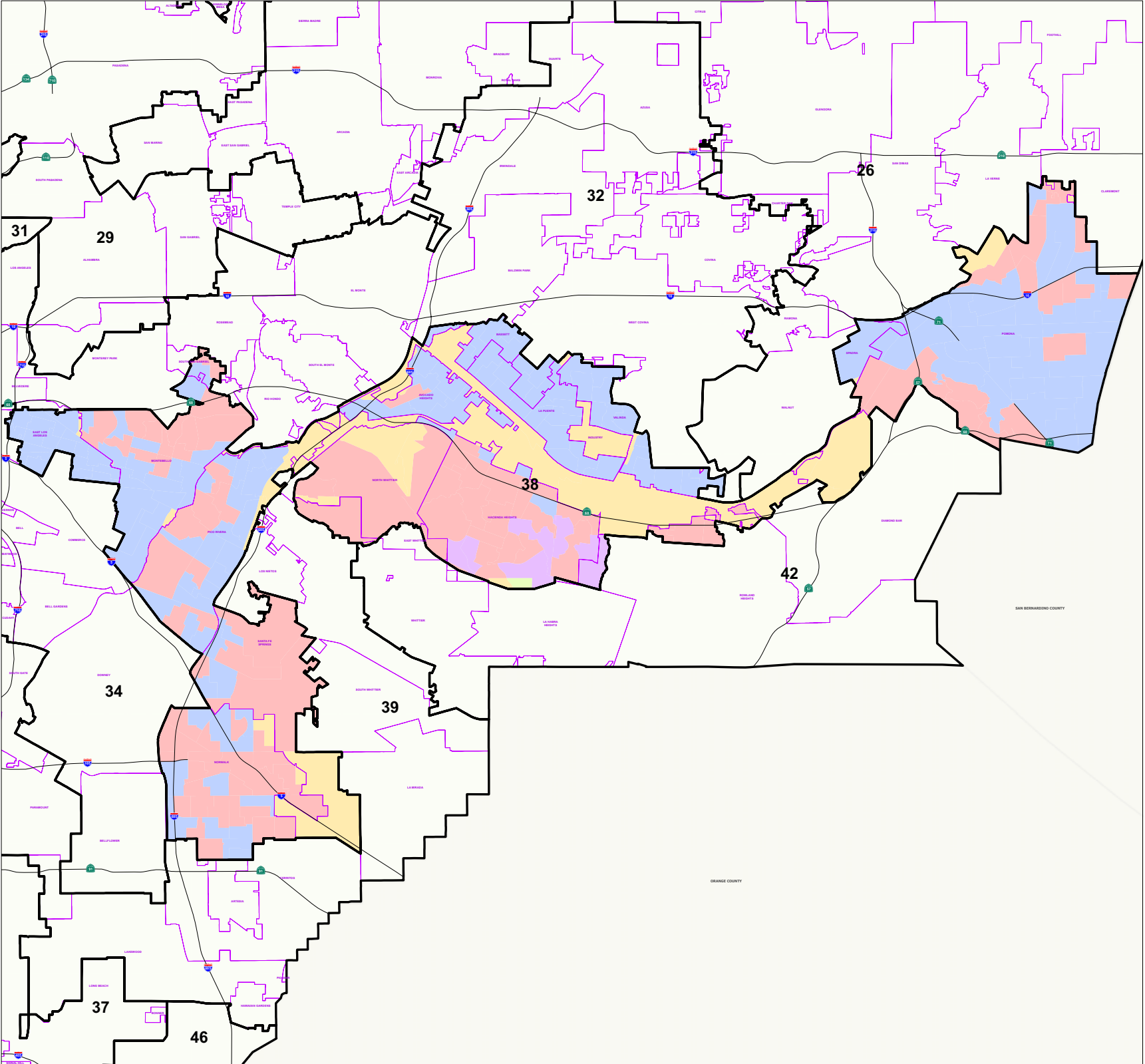
**Legend**

-  Congressional District
-  Communities
- Percent Mail In**
-  0 Percent
-  1-25%
-  26-50%
-  51-75%
-  76-100%



THIS MAP IS SUBJECT TO CHANGE WITHOUT NOTICE  
CONTACT REGISTRAR-RECORDER/COUNTY CLERK  
PRECINCTING SECTION, 12400 IMPERIAL HIGHWAY  
NORWALK, CA 90650 TEL. No. (562) 462-2473

Data contained in this map is reproduced in whole or part  
from the Thomas Brothers Map Digital Database. This  
map is copyrighted and reproduced with permission  
granted by Thomas Brothers Maps. All rights reserved.






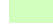






**2008 Presidential  
General Election**

**38th Congressional District  
Provisional Votes Cast  
by Election Precinct**

**Legend**

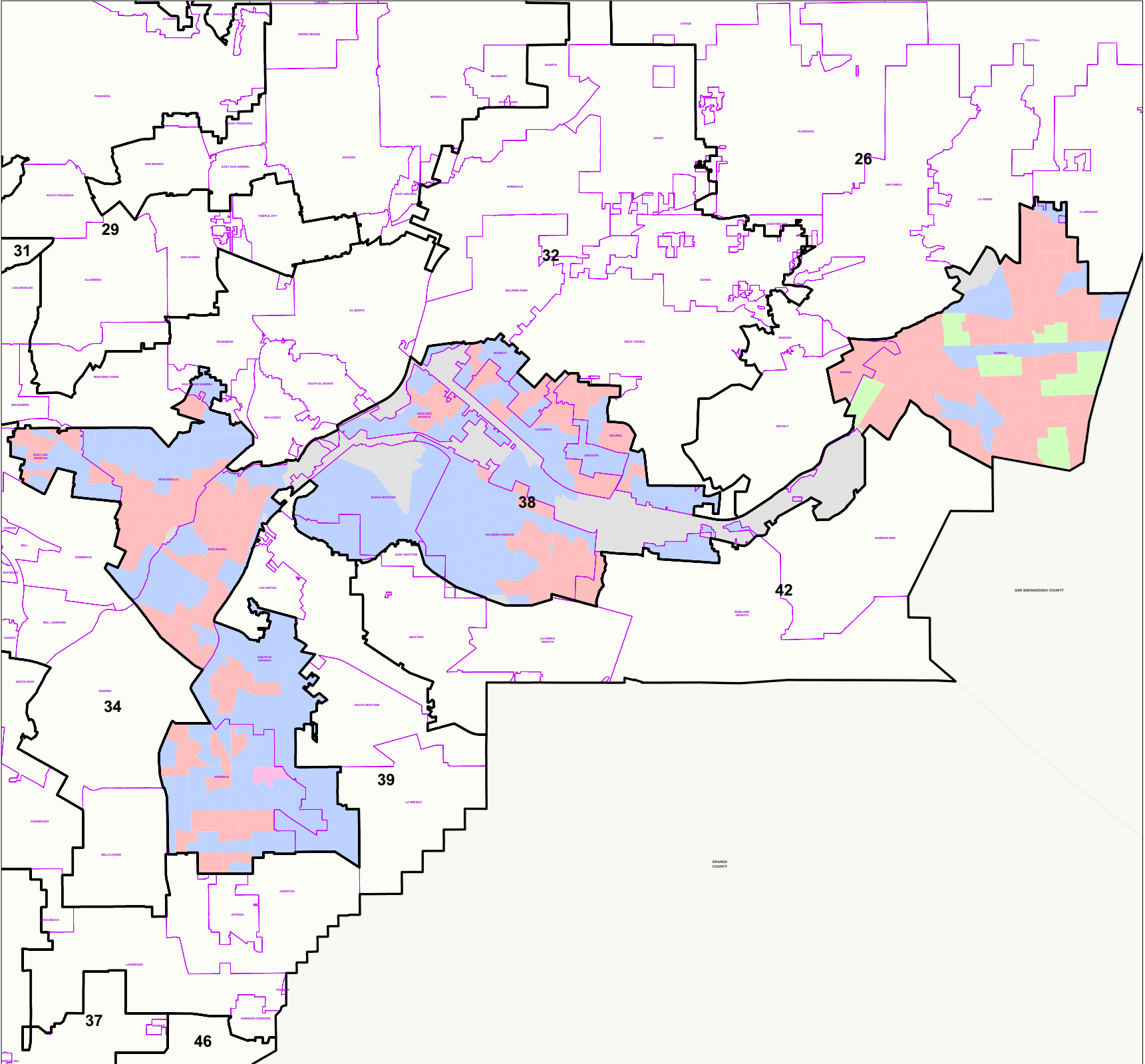
-  Congressional District
-  Communities
- Provisional Votes**
-  0 Ballots cast
-  1 - 50 Ballots cast
-  51 - 100 Ballots cast
-  101 - 150 Ballots cast
-  151 - 200 Ballots cast
-  Over 201 Ballots cast



0 0.500 1.000 1.500 2.000 Miles

THIS MAP IS SUBJECT TO CHANGE WITHOUT NOTICE  
CONTACT REGISTRAR-RECORDER/COUNTY CLERK  
PRECINCTING SECTION, 12400 IMPERIAL HIGHWAY  
NORWALK, CA 90650 TEL. No. (562) 462-2473

Data contained in this map is reproduced in whole or part  
from the Thomas Brothers Maps Digital Database. This  
map is copyrighted and reproduced with permission  
granted by Thomas Brothers Maps. All rights reserved.






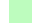


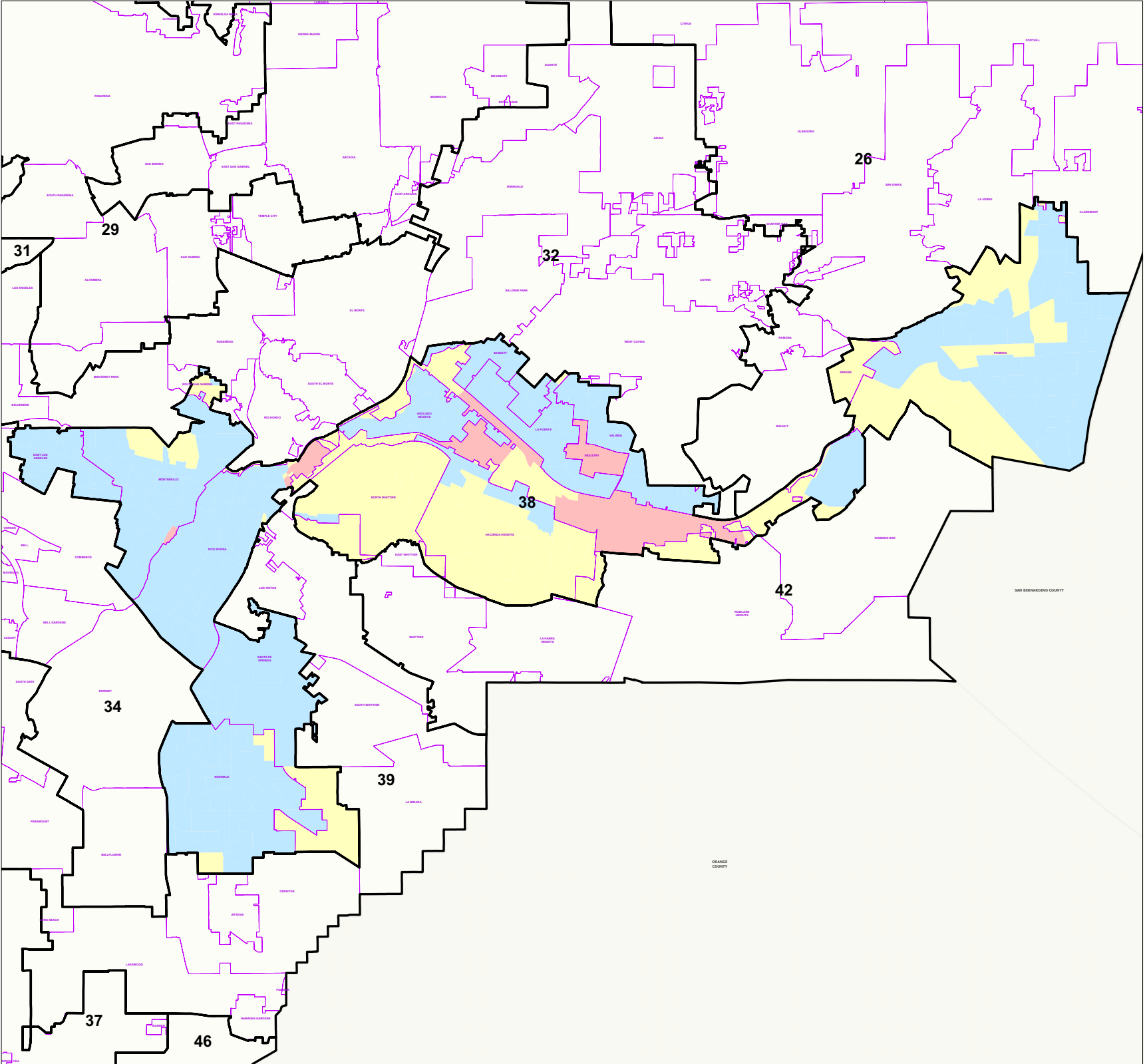


**2008 Presidential  
General Election**

**38th Congressional District  
Voters by Party  
by Election Precinct**

**Legend**

-  Congressional District
-  Communities
- Voters by Party**
-  None
-  Democrat 50%+1
-  Republican 50%+1
-  Decline to state 50%+1



0 0.50 1.00 1.50 2.00 Miles

THIS MAP IS SUBJECT TO CHANGE WITHOUT NOTICE  
CONTACT REGISTRAR-RECORDER/COUNTY CLERK  
PRECINCTING SECTION, 12400 IMPERIAL HIGHWAY  
NORWALK, CA 90650 TEL. No. (562) 462-2473

Data contained in this map is reproduced in whole or part  
from the Thomas Brothers Maps Digital Database. This  
map is copyrighted and reproduced with permission  
granted by Thomas Brothers Maps. All rights reserved.




**2008 Presidential  
General Election**


**38th Congressional District  
Age 18-29 Votes cast  
by Election Precinct**

**Legend**


 Congressional District


 Communities


**Votes by Age**

 0 Percent

 1-25%

 26-50%

 51-70%

 Over 71%



0 0.450.9 1.8 2.7 3.6  
Miles

THIS MAP IS SUBJECT TO CHANGE WITHOUT NOTICE  
CONTACT REGISTRAR-RECORDER/COUNTY CLERK  
PRECINCTING SECTION, 12400 IMPERIAL HIGHWAY  
NORWALK, CA 90650 TEL. No. (562) 462-2473

Data contained in this map is reproduced in whole or part  
from the Thomas Brothers Maps Digital Database. This  
map is copyrighted and reproduced with permission  
granted by Thomas Brothers Maps. All rights reserved.








Thursday, January 8, 2009

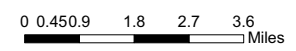


**2008 Presidential  
General Election**

**38th Congressional District  
Age 30-39 Votes cast  
by Election Precinct**

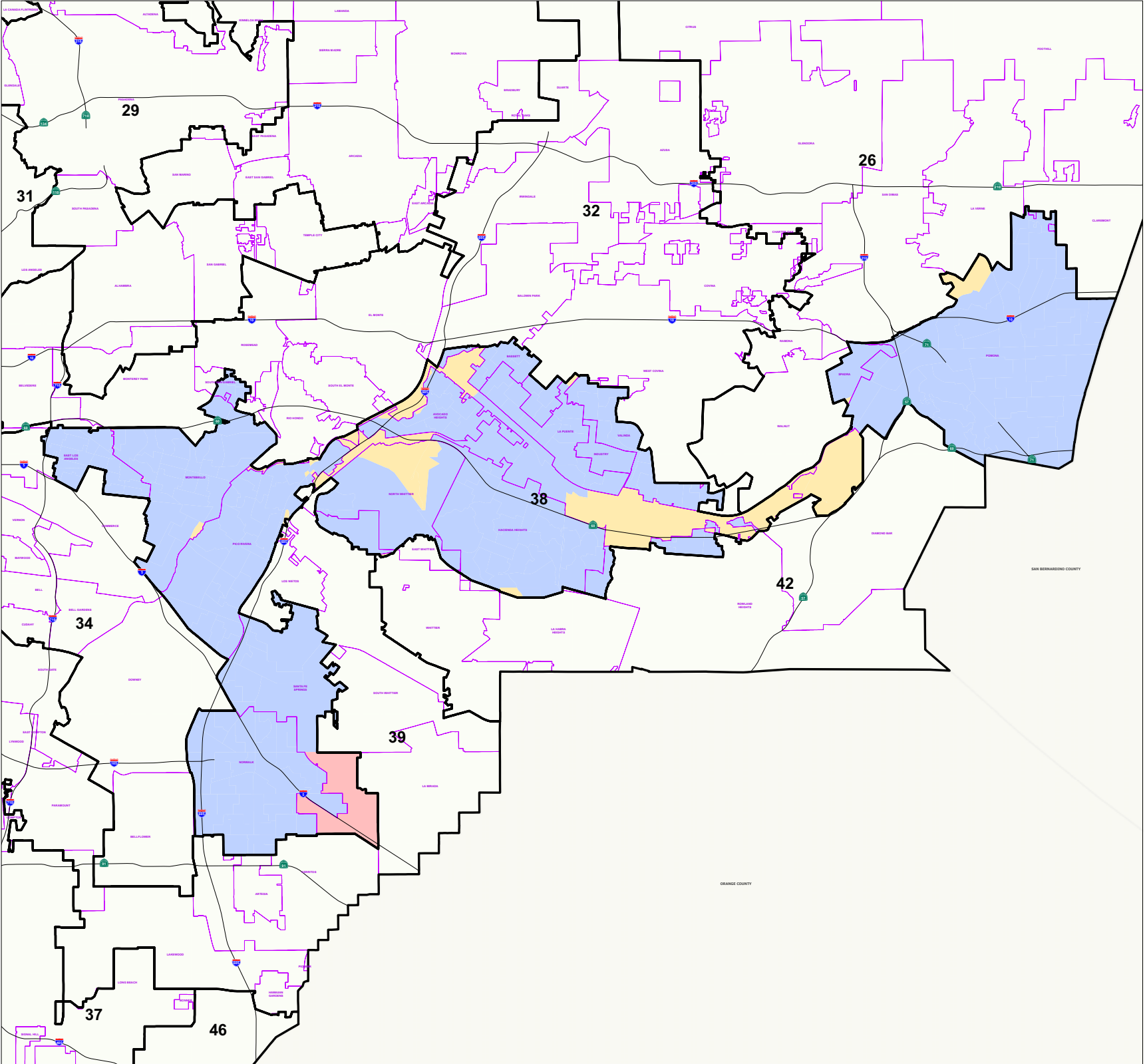
**Legend**

-  Congressional District
-  Communities
- Voters by Age**
  -  0 Percent
  -  1-25%
  -  26-50%
  -  51-70%
  -  Over 71%



THIS MAP IS SUBJECT TO CHANGE WITHOUT NOTICE  
CONTACT REGISTRAR-RECORDER/COUNTY CLERK  
PRECINCTING SECTION, 12400 IMPERIAL HIGHWAY  
NORWALK, CA 90650 TEL. No. (562) 462-2473

Data contained in this map is reproduced in whole or part  
from the Thomas Brothers Maps Digital Database. This  
map is copyrighted and reproduced with permission  
granted by Thomas Brothers Maps. All rights reserved.

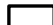








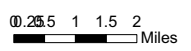
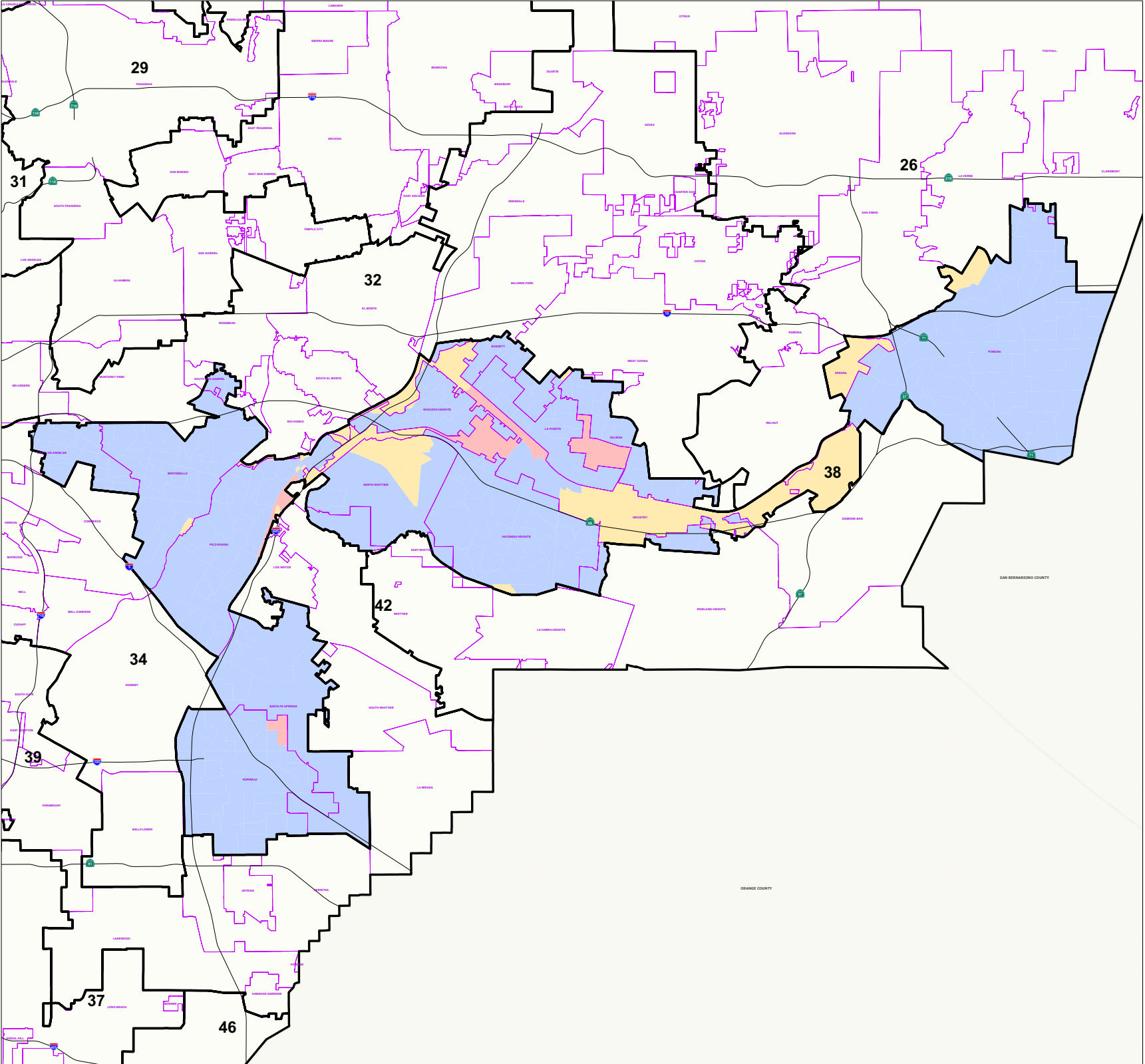


**2008 Presidential  
General Election**

**38th Congressional District  
Age 40-49 Votes Cast  
by Election Precinct**

**Legend**

-  Congressional District
-  Communities
- Voters by Age 40-49**
-  0 Percent
-  1-25%
-  26-50%
-  51-75%
-  76-100%



THIS MAP IS SUBJECT TO CHANGE WITHOUT NOTICE  
CONTACT REGISTRAR-RECORDER/COUNTY CLERK  
PRECINCTING SECTION, 12400 IMPERIAL HIGHWAY  
NORWALK, CA 90650 TEL. No. (562) 462-2473

Data contained in this map is reproduced in whole or part  
from the Thomas Brothers Maps Digital Database. This  
map is copyrighted and reproduced with permission  
granted by Thomas Brothers Maps. All rights reserved.










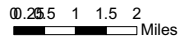
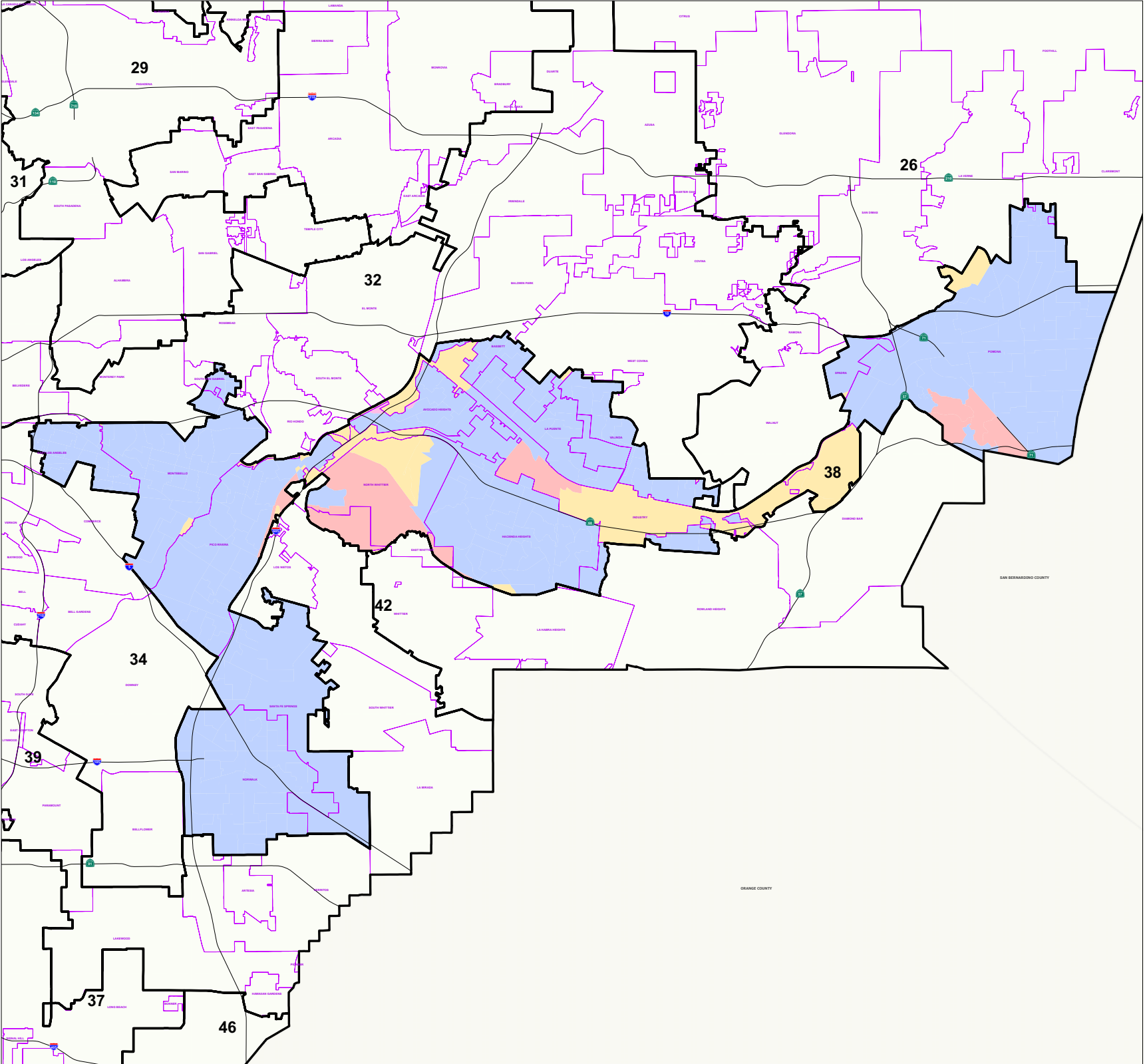


**2008 Presidential  
General Election**

**38th Congressional District  
Age 50-59 Votes Cast  
by Election Precinct**

**Legend**

-  Congressional District
-  Communities
- Votes by Age 50-59**
-  0 Percent
-  1-25%
-  26-50%
-  51-75%
-  76-100%



THIS MAP IS SUBJECT TO CHANGE WITHOUT NOTICE  
CONTACT REGISTRAR-RECORDER/COUNTY CLERK  
PRECINCTING SECTION, 12400 IMPERIAL HIGHWAY  
NORWALK, CA 90650 TEL. No. (562) 462-2473








Data contained in this map is reproduced in whole or part  
from the Thomas Brothers Maps Digital Database. This  
map is copyrighted and reproduced with permission  
granted by Thomas Brothers Maps. All rights reserved.

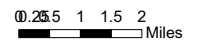


**2008 Presidential  
General Election**

**38th Congressional District  
Age 60-69 Votes Cast  
by Election Precinct**

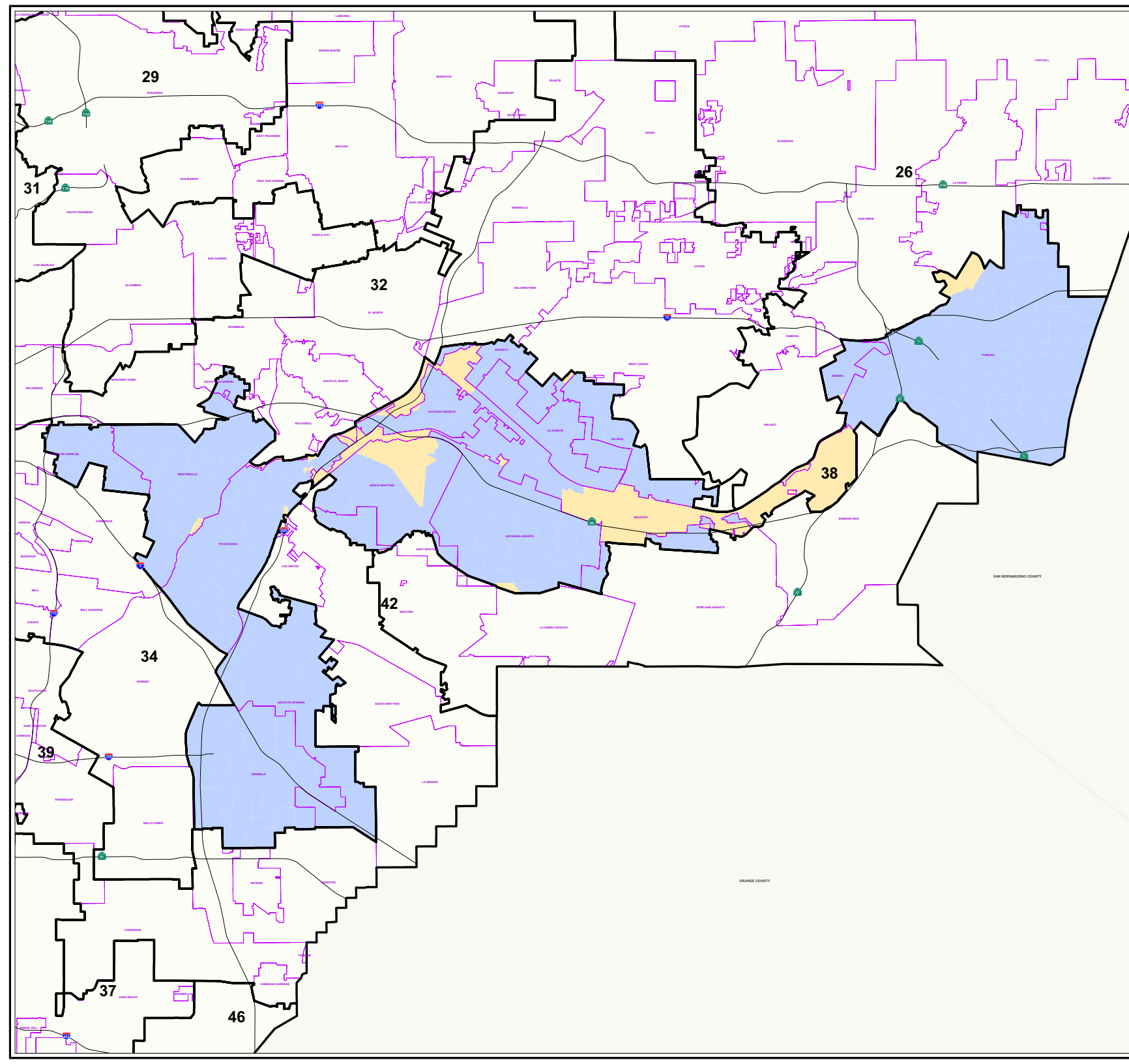
**Legend**

-  Congressional District
-  Communities
- Votes by Age 60-69**
-  0 Percent
-  1-25%
-  26-50%
-  51-75%
-  76-100%



THIS MAP IS SUBJECT TO CHANGE WITHOUT NOTICE  
CONTACT REGISTRAR-RECORDER/COUNTY CLERK  
PRECINCTING SECTION, 12400 IMPERIAL HIGHWAY  
NORWALK, CA 90650 TEL. No. (562) 462-2473

Data contained in this map is reproduced in whole or part  
from the Thomas Brothers Maps Digital Database. This  
map is copyrighted and reproduced with permission  
granted by Thomas Brothers Maps. All rights reserved.










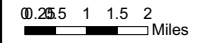


**2008 Presidential  
General Election**

**38th Congressional District  
Age over 70 Votes Cast  
by Election Precinct**

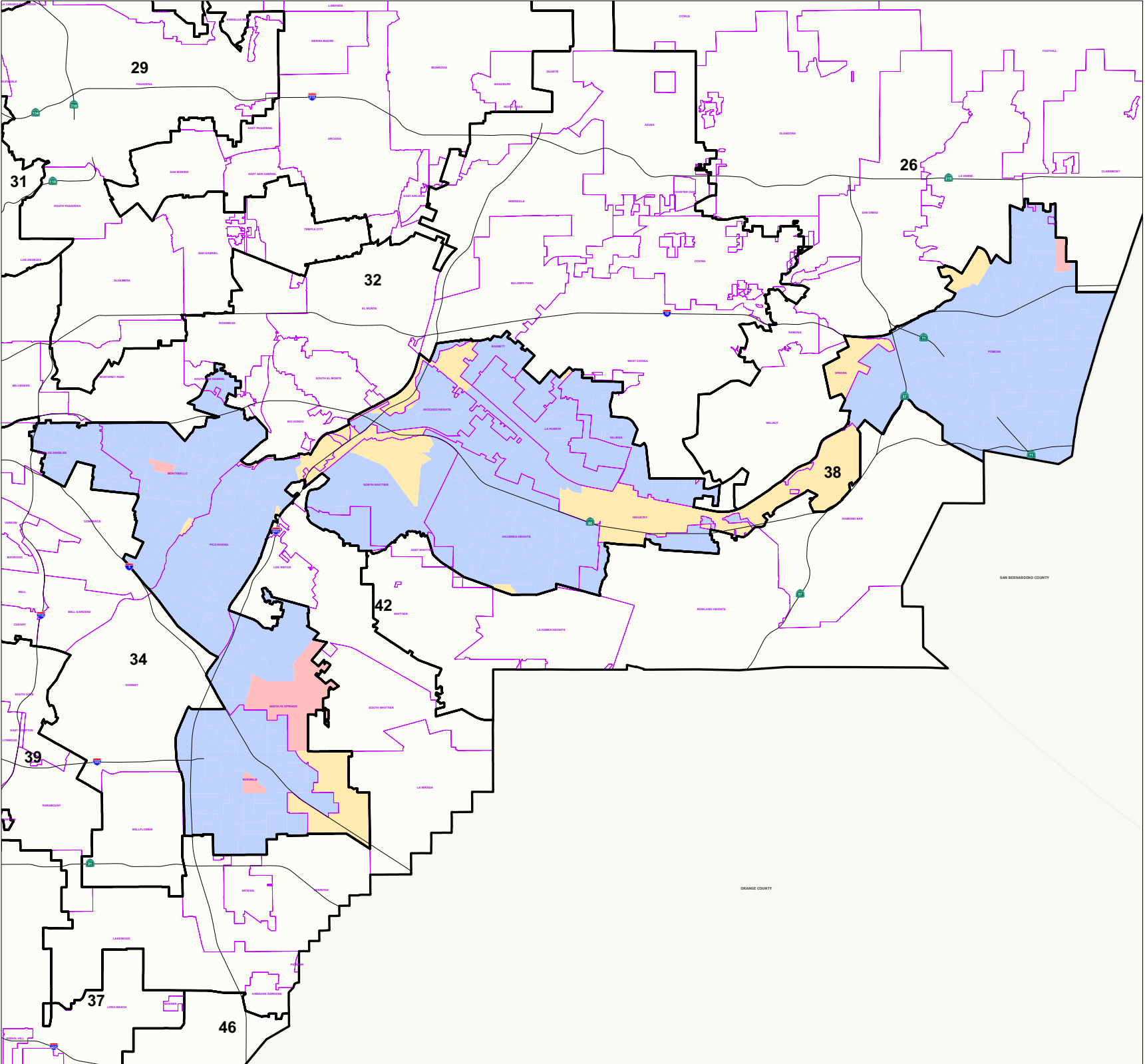
**Legend**

-  Congressional District
-  Communities
- Votes by Age Over 70**
-  0 Percent
-  1-25%
-  26-50%
-  51-75%
-  76-100%



THIS MAP IS SUBJECT TO CHANGE WITHOUT NOTICE  
CONTACT REGISTRAR-RECORDER/COUNTY CLERK  
PRECINCTING SECTION, 12400 IMPERIAL HIGHWAY  
NORWALK, CA 90650 TEL. No. (562) 462-2473

Data contained in this map is reproduced in whole or part  
from the Thomas Brothers Maps Digital Database. This  
map is copyrighted and reproduced with permission  
granted by Thomas Brothers Maps. All rights reserved.






**2008 Presidential  
General Election**


**38th Congressional District  
Female Votes Cast  
by Election Precinct**

**Legend**

 Congressional District

 Communities

**Voters by Gender**

 0 Percent

 1-25%

 26-50%

 51-70%

 Over 71%



0 0.450.9 1.8 2.7 3.6  
Miles

THIS MAP IS SUBJECT TO CHANGE WITHOUT NOTICE  
CONTACT REGISTRAR-RECORDER/COUNTY CLERK  
PRECINCTING SECTION, 12400 IMPERIAL HIGHWAY  
NORWALK, CA 90650 TEL. No. (562) 462-2473

Data contained in this map is reproduced in whole or part  
from the Thomas Brothers Maps Digital Database. This  
map is copyrighted and reproduced with permission  
granted by Thomas Brothers Maps. All rights reserved.

Thursday, January 8, 2009



**2008 Presidential  
General Election**

**38th Congressional District  
Male Votes Cast  
by Election Precinct**

**Legend**

Congressional District

Communities

**Votes by Gender**

0 Percent

1-25%

26-50%

51-70%

Over 71%



0 0.450.9 1.8 2.7 3.6  
Miles

THIS MAP IS SUBJECT TO CHANGE WITHOUT NOTICE  
CONTACT REGISTRAR-RECORDER/COUNTY CLERK  
PRECINCTING SECTION, 12400 IMPERIAL HIGHWAY  
NORWALK, CA 90650 TEL. No. (562) 462-2473

Data contained in this map is reproduced in whole or part  
from the Thomas Brothers Maps Digital Database. This  
map is copyrighted and reproduced with permission  
granted by Thomas Brothers Maps. All rights reserved.

Thursday, January 8, 2009