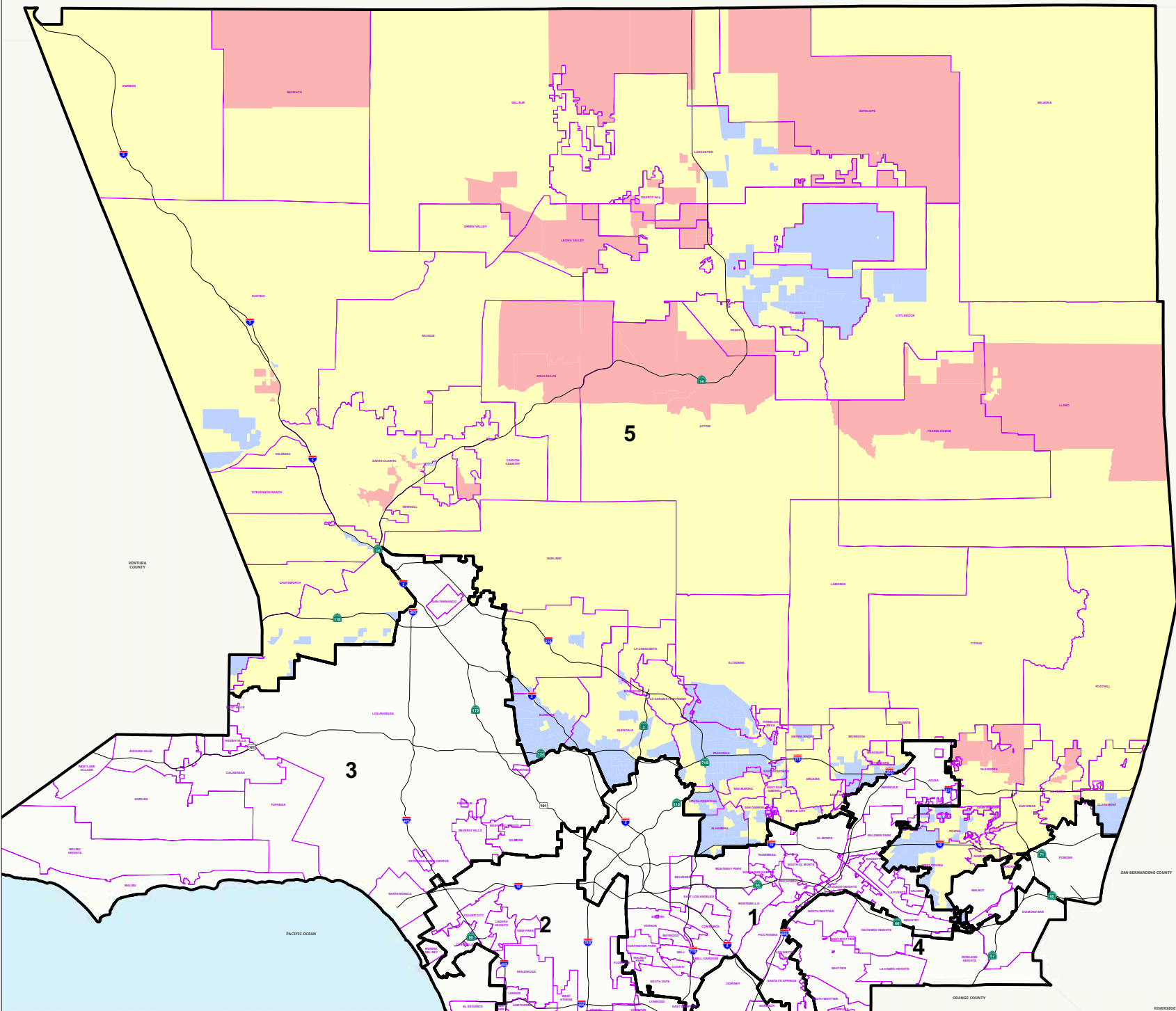









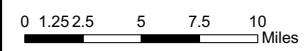
**2008 Presidential
General Election**

**5th Supervisorial District
Votes for President
over 50% by Election Precinct**



Legend

-  Supervisorial District
-  Communities
- Votes for President**
-  Other
-  Obama over 50%
-  McCain over 50%



THIS MAP IS SUBJECT TO CHANGE WITHOUT NOTICE
CONTACT REGISTRAR-RECORDER/COUNTY CLERK
PRECINCTING SECTION, 12400 IMPERIAL HIGHWAY
NORWALK, CA 90650 TEL. No. (562) 462-2473

Data contained in this map is reproduced in whole or part
from the Thomas Brothers Maps Digital Database. This
map is copyrighted and reproduced with permission
granted by Thomas Brothers Maps. All rights reserved.



2008 Presidential General Election

5th Supervisorial District Votes for Obama by Election Precinct

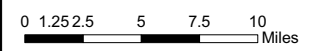
Legend

Supervisorial District

Communities

Votes for President

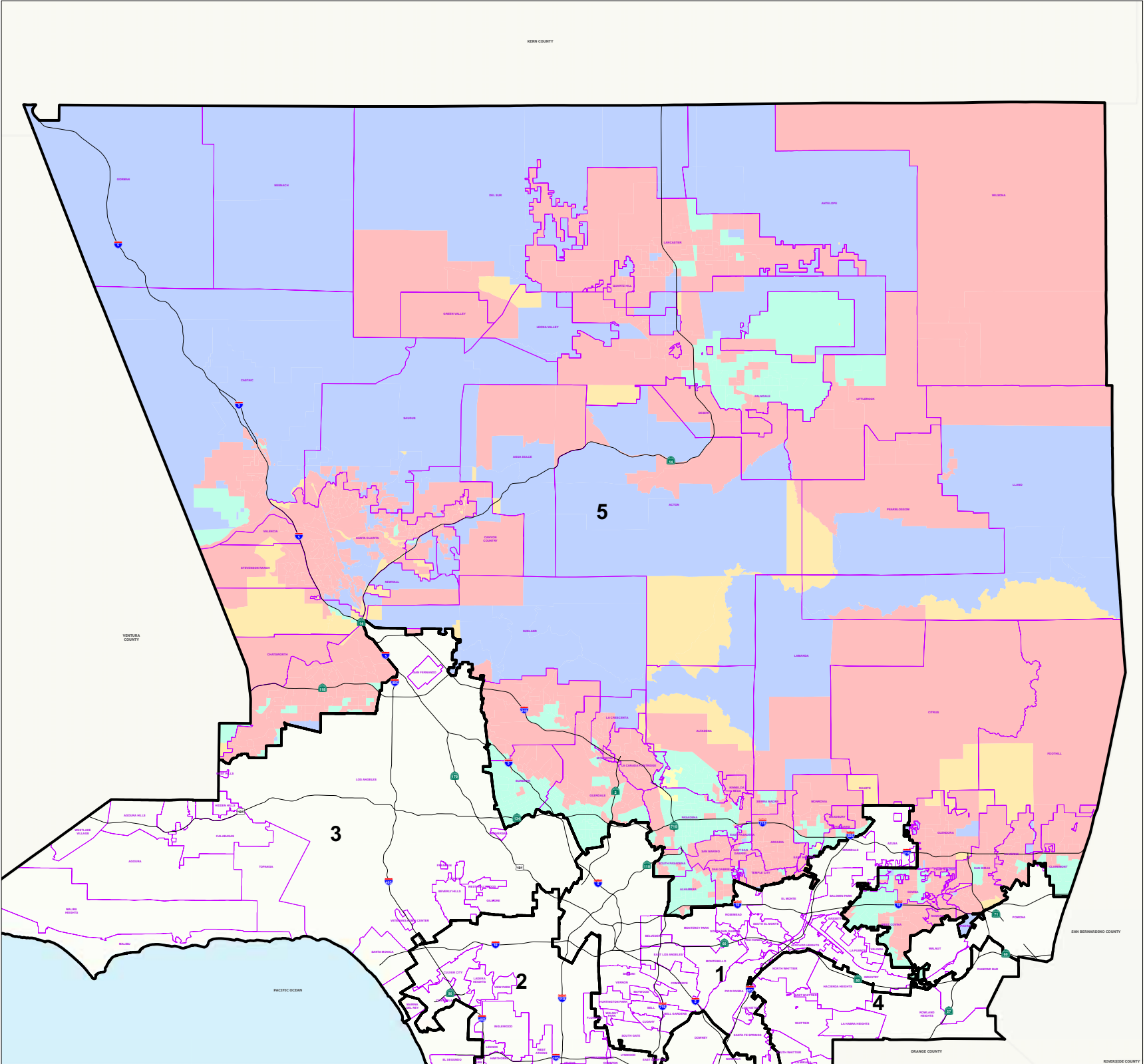
- 0 Percent
- 1 - 25%
- 26 - 50%
- 51 - 75%
- 76 - 100%



THIS MAP IS SUBJECT TO CHANGE WITHOUT NOTICE
CONTACT REGISTRAR-RECORDER/COUNTY CLERK
PRECINCTING SECTION, 12400 IMPERIAL HIGHWAY
NORWALK, CA 90650 TEL. No. (562) 462-2473

Data contained in this map is reproduced in whole or part
from the Thomas Brothers Maps Digital Database. This
map is copyrighted and reproduced with permission
granted by Thomas Brothers Maps. All rights reserved.

Thursday, January 8, 2009





**2008 Presidential
General Election**

**5th Supervisorial District
Votes for McCain
by Election Precinct**

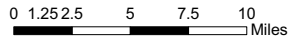
Legend

Supervisorial District

Communities

Votes for President

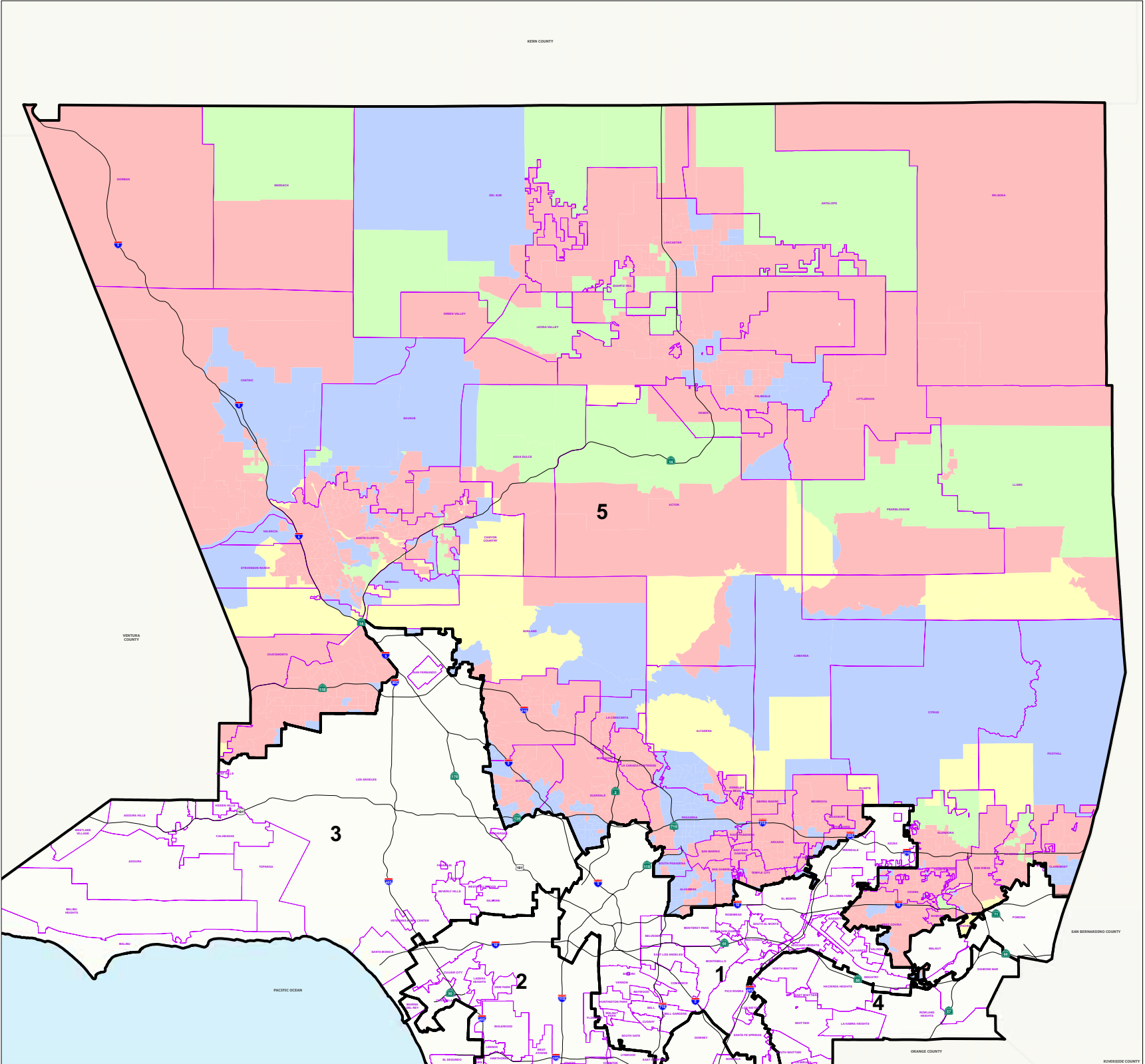
- 0 Percent
- 1 - 25%
- 26 - 50%
- 51 - 75%
- 76 - 100%



THIS MAP IS SUBJECT TO CHANGE WITHOUT NOTICE
CONTACT REGISTRAR-RECORDER/COUNTY CLERK
PRECINCTING SECTION, 12400 IMPERIAL HIGHWAY
NORWALK, CA 90650 TEL. No. (562) 462-2473

Data contained in this map is reproduced in whole or part
from the Thomas Brothers Mass Digital Database. This
map is copyrighted and reproduced with permission
granted by Thomas Brothers Maps. All rights reserved.



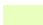




Thursday, January 8, 2009

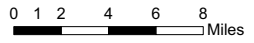
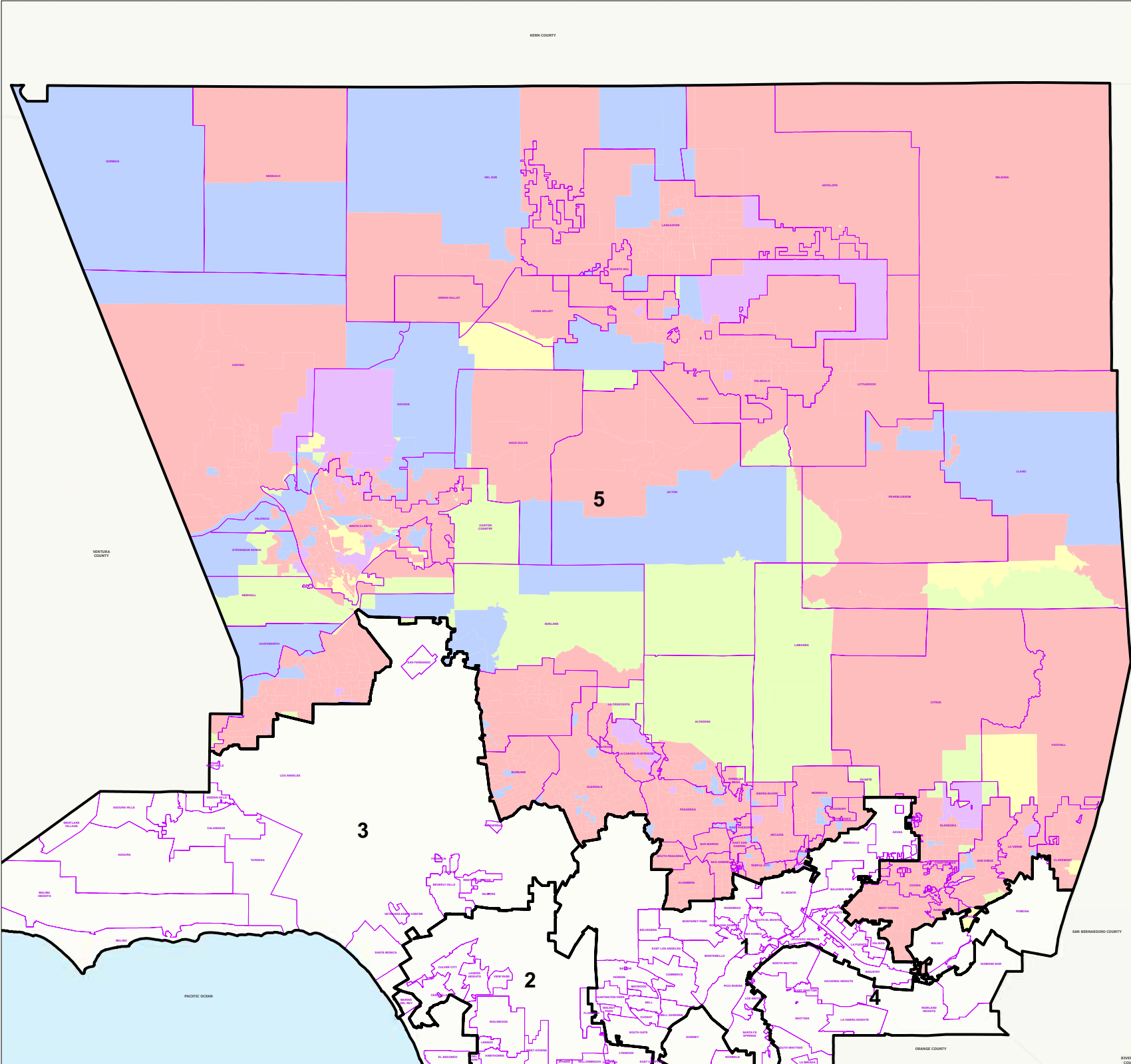




**2008 Presidential
General Election**

**5th Supervisorial District
New Registered Voters
Age 18-29 by Election Precinct**

- Legend**
-  Supervisorial District
 -  Communities
 - New Registered Voters by Age 18-29**
 -  0 Percent
 -  1-25%
 -  26-50%
 -  51-75%
 -  76-100%





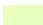




THIS MAP IS SUBJECT TO CHANGE WITHOUT NOTICE
CONTACT REGISTRAR-RECORDER/COUNTY CLERK
PRECINCTING SECTION, 12400 IMPERIAL HIGHWAY
NORWALK, CA 90650 TEL. No. (562) 462-2473

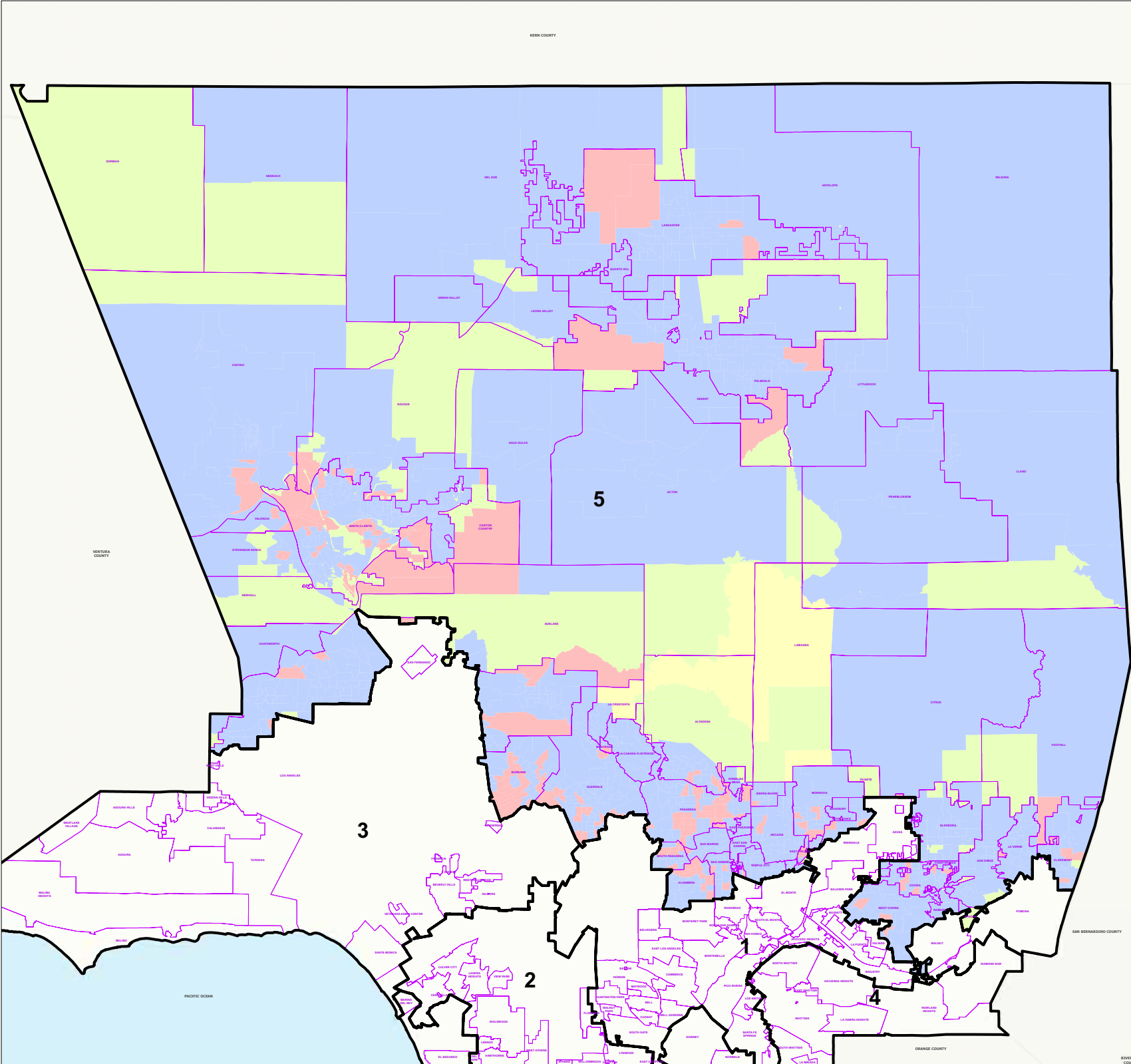
Data contained in this map is reproduced in whole or part
from the Thomas Brothers Maps Digital Database. This
map is copyrighted and reproduced with permission
granted by Thomas Brothers Maps. All rights reserved.



**2008 Presidential
General Election**

**5th Supervisorial District
New Registered Voters
Age 30-39 by Election Precinct**

- Legend**
-  Supervisorial District
 -  Communities
 - New Registered Voters by Age 30-39**
 -  0 Percent
 -  1-25%
 -  26-50%
 -  51-75%
 -  76-100%




THIS MAP IS SUBJECT TO CHANGE WITHOUT NOTICE
CONTACT REGISTRAR-RECORDER/COUNTY CLERK
PRECINCTING SECTION, 12400 IMPERIAL HIGHWAY
NORWALK, CA 90650 TEL. No. (562) 462-2473
Data contained in this map is reproduced in whole or part
from the Thomas Brothers Mass Digital Database. This
map is copyrighted and reproduced with permission
granted by Thomas Brothers Maps. All rights reserved.
Thursday, January 8, 2009




**2008 Presidential
General Election**


**5th Supervisorial District
New Registrants Age 40-49
by Election Precinct**

Legend


 Supervisorial District

 Communities


New Registrants Age 40-49

 0 Percent

 1-25%

 26-50%

 51-75%

 76-100%



0 1 2 3 4
Miles

THIS MAP IS SUBJECT TO CHANGE WITHOUT NOTICE
CONTACT REGISTRAR-RECORDER/COUNTY CLERK
PRECINCTING SECTION, 12400 IMPERIAL HIGHWAY
NORWALK, CA 90650 TEL. No. (562) 462-2473

Data contained in this map is reproduced in whole or part
from the Thomas Brothers Maps Digital Database. This
map is copyrighted and reproduced with permission
granted by Thomas Brothers Maps. All rights reserved.

Thursday, January 8, 2009

KEEN COUNTY

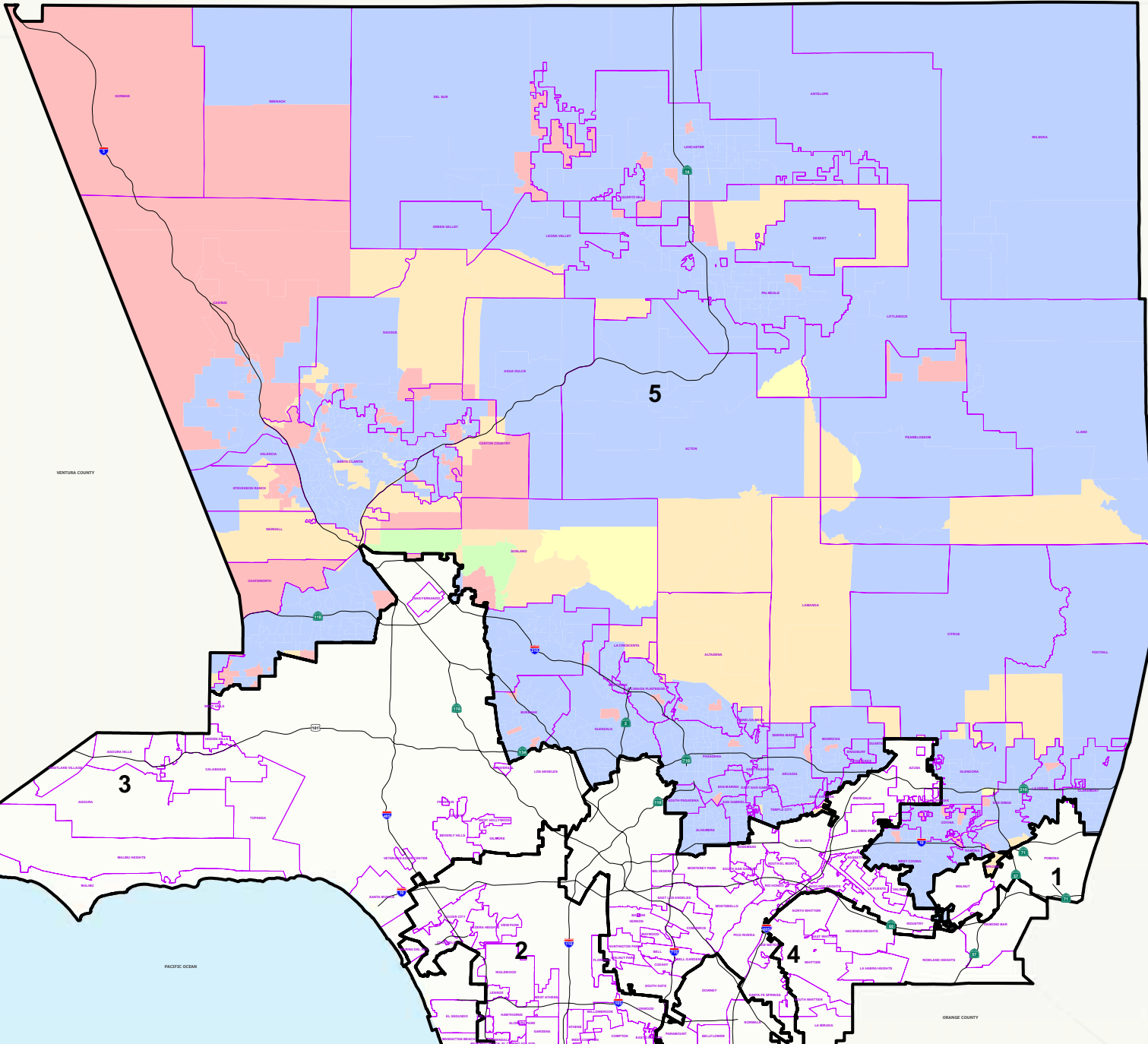
VENTURA COUNTY

SAN BERNARDINO COUNTY

RIVERSIDE COUNTY

ORANGE COUNTY

PACIFIC OCEAN





2008 Presidential General Election

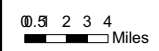
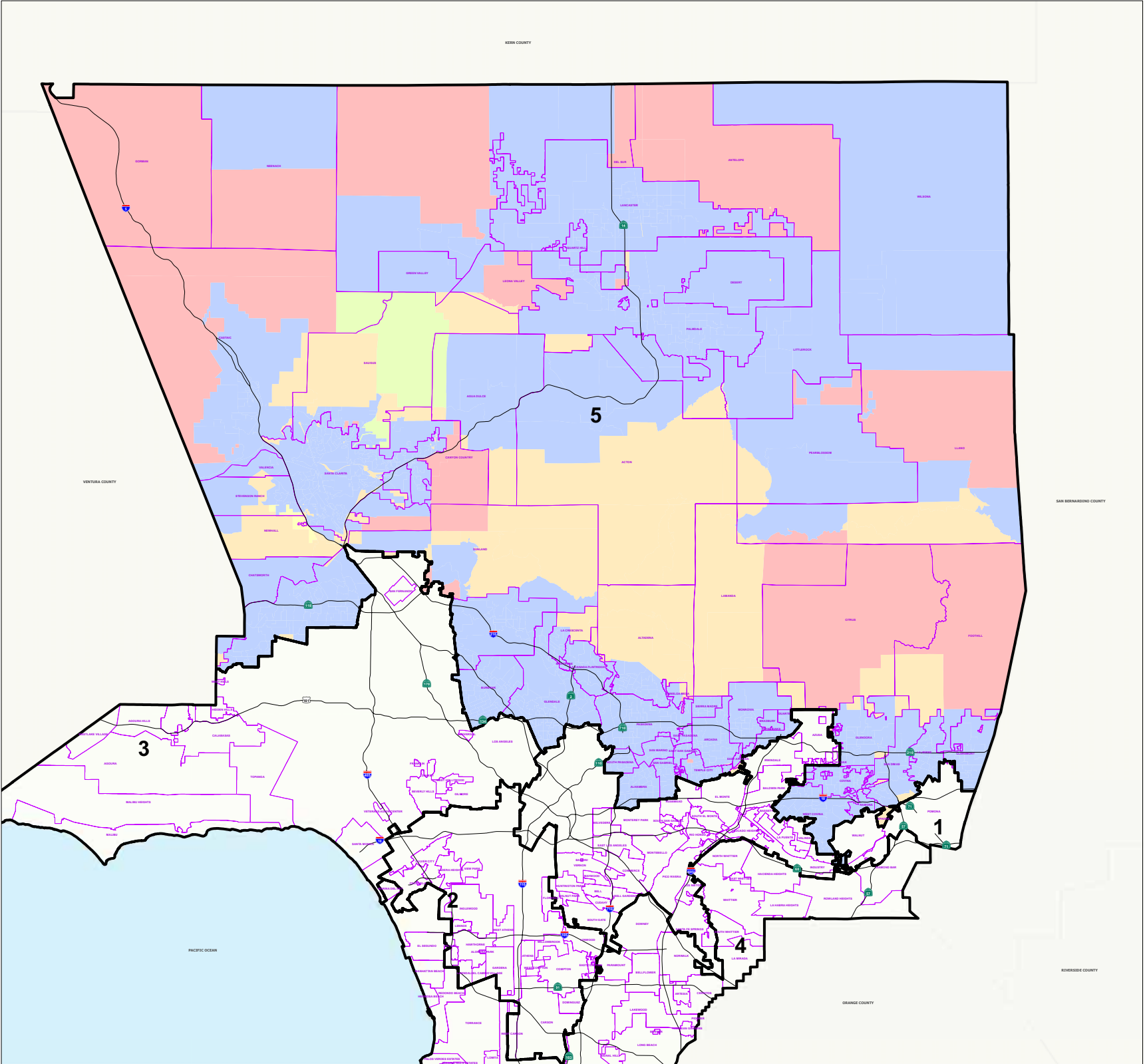
5th Supervisorial District New Registrants Age 50-59 by Election Precinct

Legend

- Supervisorial District
- Communities

New Registrants Age 50-59

- 0 Percent
- 1-25%
- 26-50%
- 51-75%
- 76-100%



THIS MAP IS SUBJECT TO CHANGE WITHOUT NOTICE
CONTACT REGISTRAR-RECORDER/COUNTY CLERK
PRECINCTING SECTION, 12400 IMPERIAL HIGHWAY
NORWALK, CA 90650 TEL. No. (562) 462-2473


Data contained in this map is reproduced in whole or part
from the Thomas Brothers Maps Digital Database. This
map is copyrighted and reproduced with permission
granted by Thomas Brothers Maps. All rights reserved.



**2008 Presidential
General Election**


**5th Supervisorial District
New Registrants Age 60-69
by Election Precinct**


Legend


 Supervisorial District

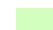
 Communities

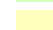
New Registrants Age 60-69

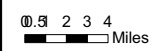
 0 Percent

 1-25%

 26-50%

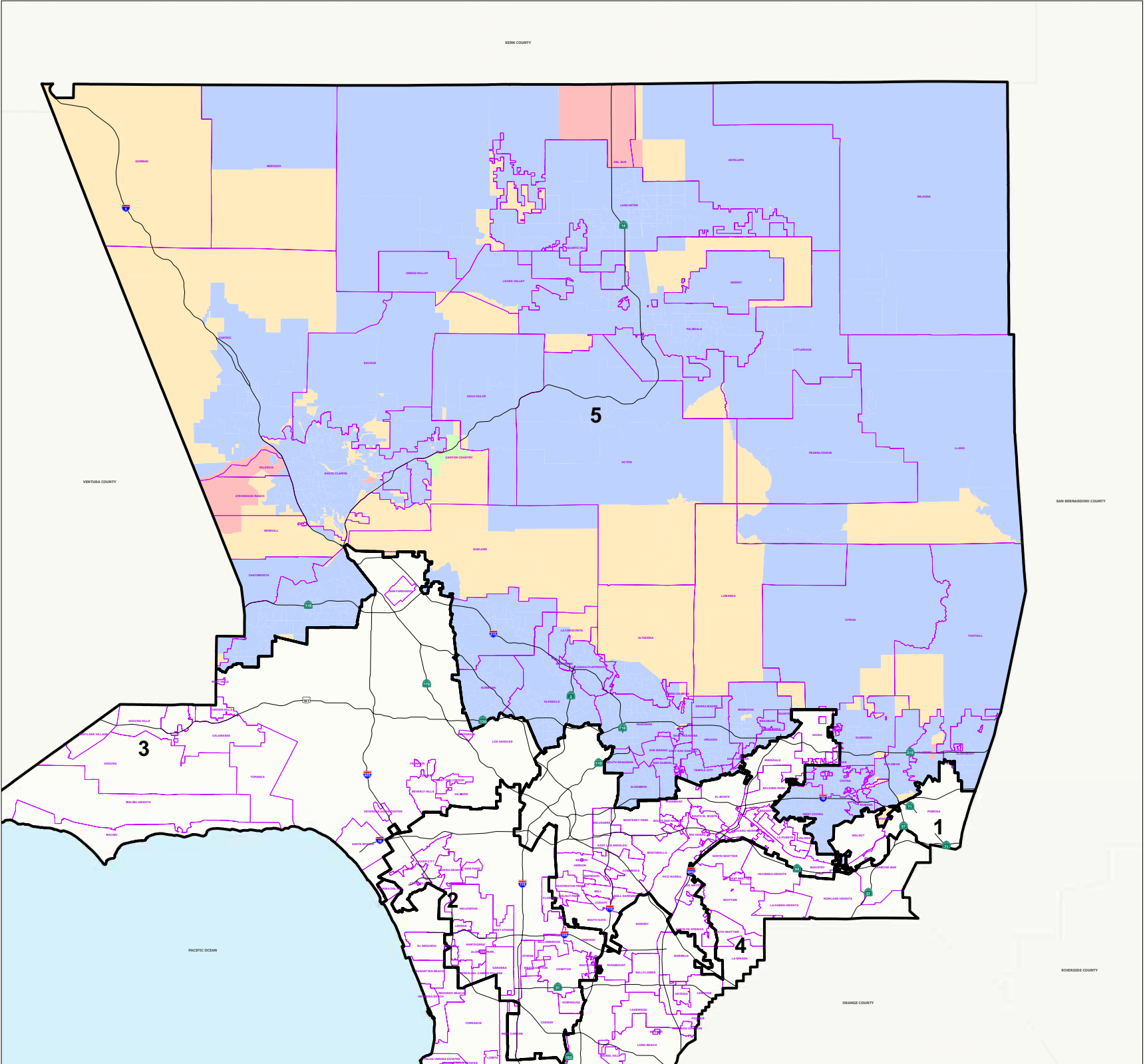
 51-75%

 76-100%



THIS MAP IS SUBJECT TO CHANGE WITHOUT NOTICE
CONTACT REGISTRAR-RECORDER/COUNTY CLERK
PRECINCTING SECTION, 12400 IMPERIAL HIGHWAY
NORWALK, CA 90650 TEL. No. (562) 462-2473

Data contained in this map is reproduced in whole or part
from the Thomas Brothers Mass Digital Database. This
map is copyrighted and reproduced with permission
granted by Thomas Brothers Maps. All rights reserved.








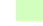



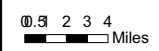
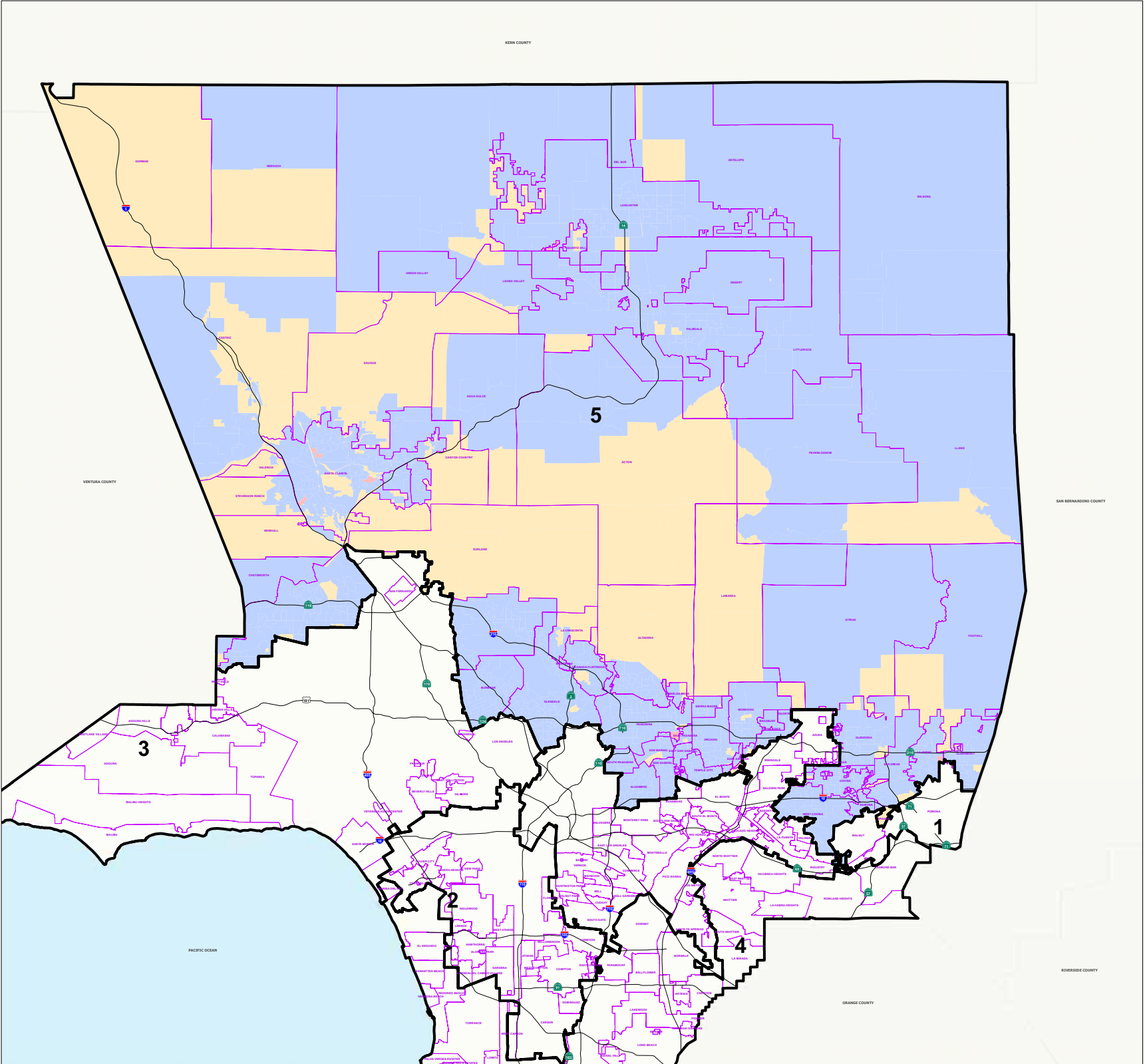
**2008 Presidential
General Election**

**5th Supervisorial District
New Registrants Age over 70
by Election Precinct**

Legend

-  Supervisorial District
-  Communities

- New Registrants Age over 70**
-  0 Percent
 -  1-25%
 -  26-50%
 -  51-75%
 -  76-100%



THIS MAP IS SUBJECT TO CHANGE WITHOUT NOTICE
CONTACT REGISTRAR-RECORDER/COUNTY CLERK
PRECINCTING SECTION, 12400 IMPERIAL HIGHWAY
NORWALK, CA 90650 TEL. No. (562) 462-2473








Data contained in this map is reproduced in whole or part
from the Thomas Brothers Maps Digital Database. This
map is copyrighted and reproduced with permission
granted by Thomas Brothers Maps. All rights reserved.

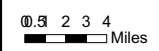
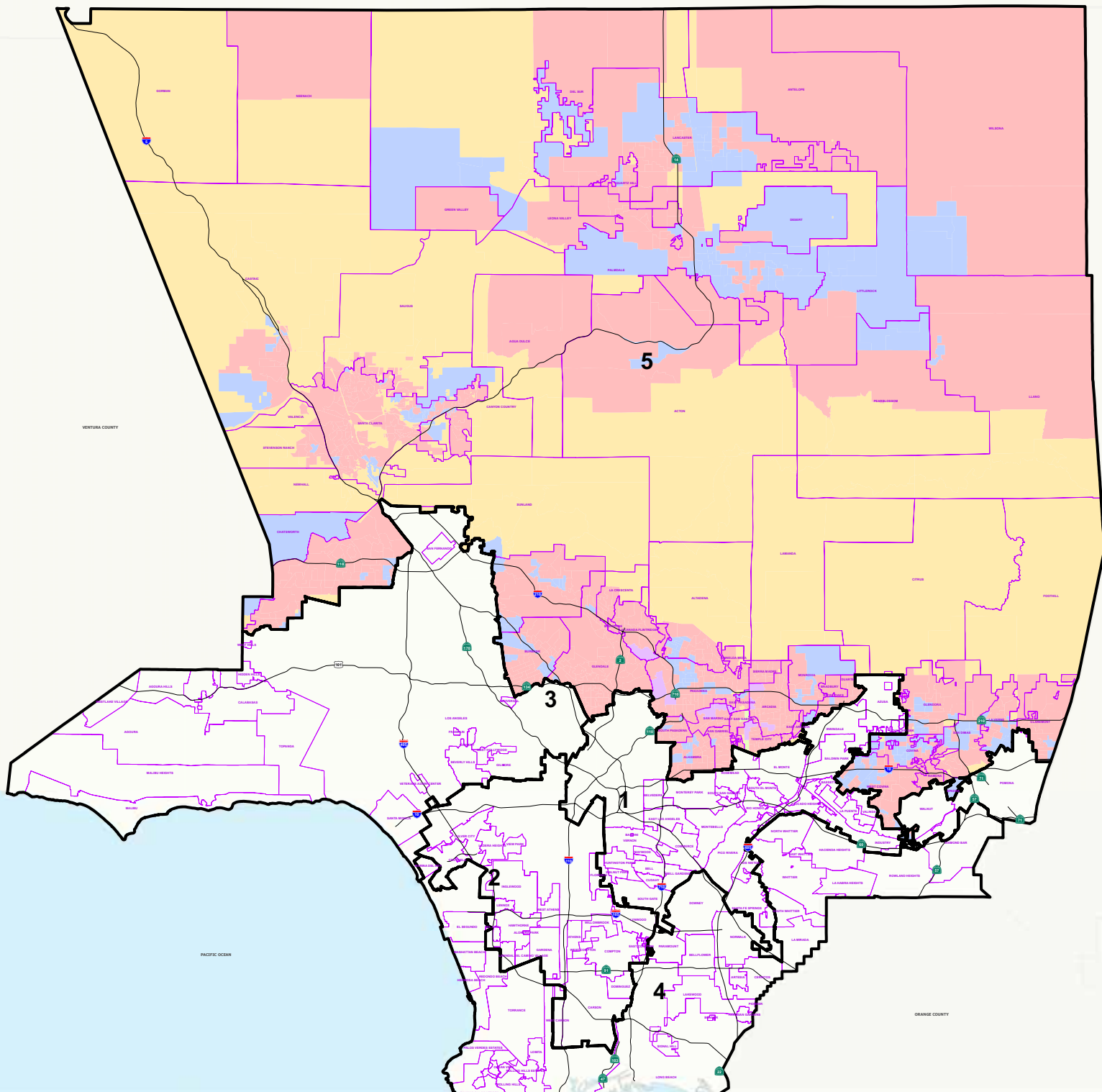


2008 Presidential General Election

5th Supervisorial District Percentage of Mail In Votes by Election Precinct

Legend

-  Supervisorial District
-  Communities
- Percent Mail In**
-  0 Percent
-  1-25%
-  26-50%
-  51-75%
-  76-100%



THIS MAP IS SUBJECT TO CHANGE WITHOUT NOTICE
CONTACT REGISTRAR-RECORDER/COUNTY CLERK
PRECINCTING SECTION, 12400 IMPERIAL HIGHWAY
NORWALK, CA 90650 TEL. No. (562) 462-2473








Data contained in this map is reproduced in whole or part
from the Thomas Brothers Maps Digital Database. This
map is copyrighted and reproduced with permission
granted by Thomas Brothers Maps. All rights reserved.

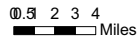
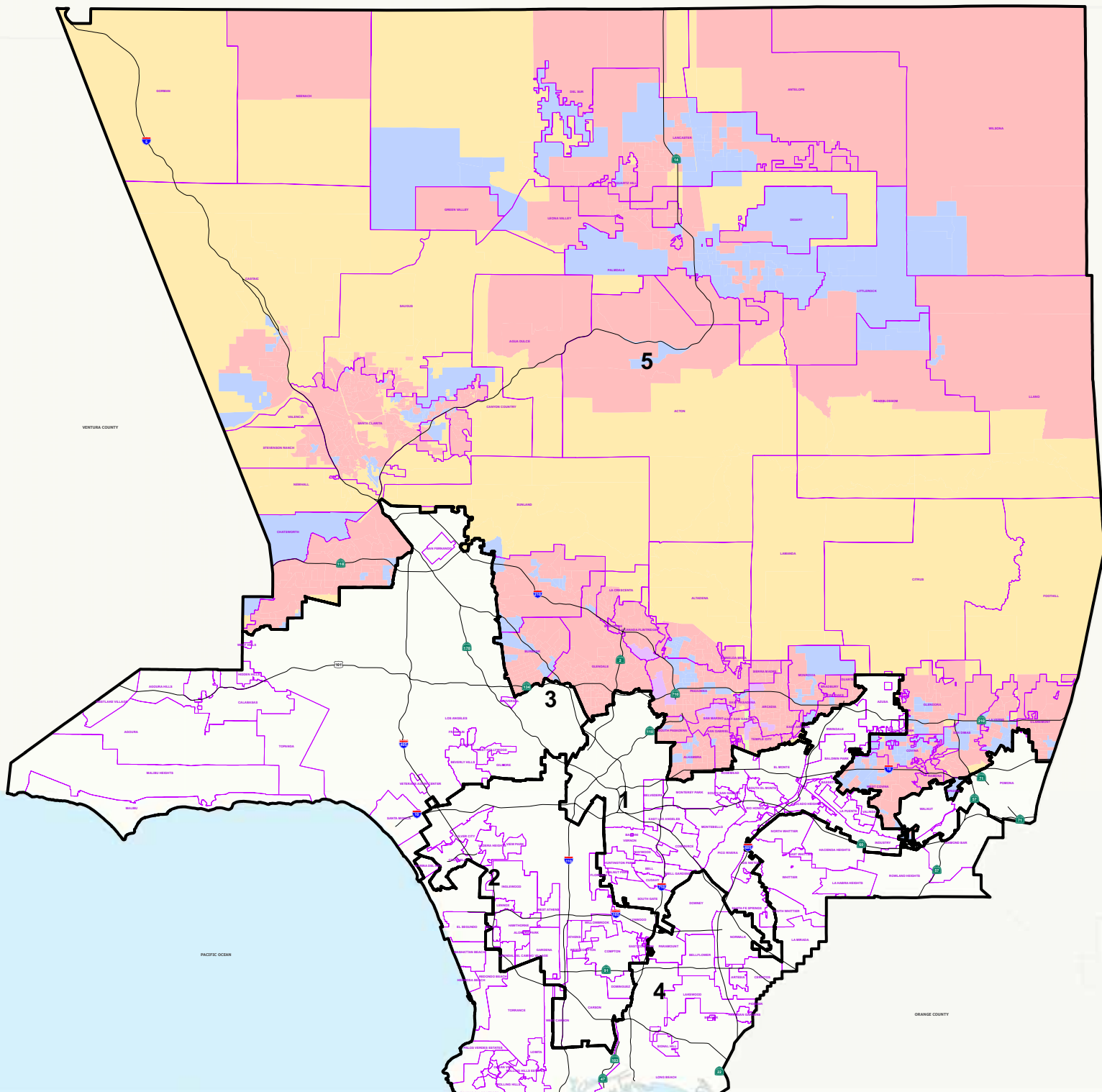


2008 Presidential General Election

5th Supervisorial District Percentage of Votes at Poll by Election Precinct

Legend

-  Supervisorial District
-  Communities
- Percent Mail In**
-  0 Percent
-  1-25%
-  26-50%
-  51-75%
-  76-100%



THIS MAP IS SUBJECT TO CHANGE WITHOUT NOTICE
CONTACT REGISTRAR-RECORDER/COUNTY CLERK
PRECINCTING SECTION, 12400 IMPERIAL HIGHWAY
NORWALK, CA 90650 TEL. No. (562) 462-2473









Data contained in this map is reproduced in whole or part
from the Thomas Brothers Maps Digital Database. This
map is copyrighted and reproduced with permission
granted by Thomas Brothers Maps. All rights reserved.

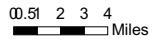
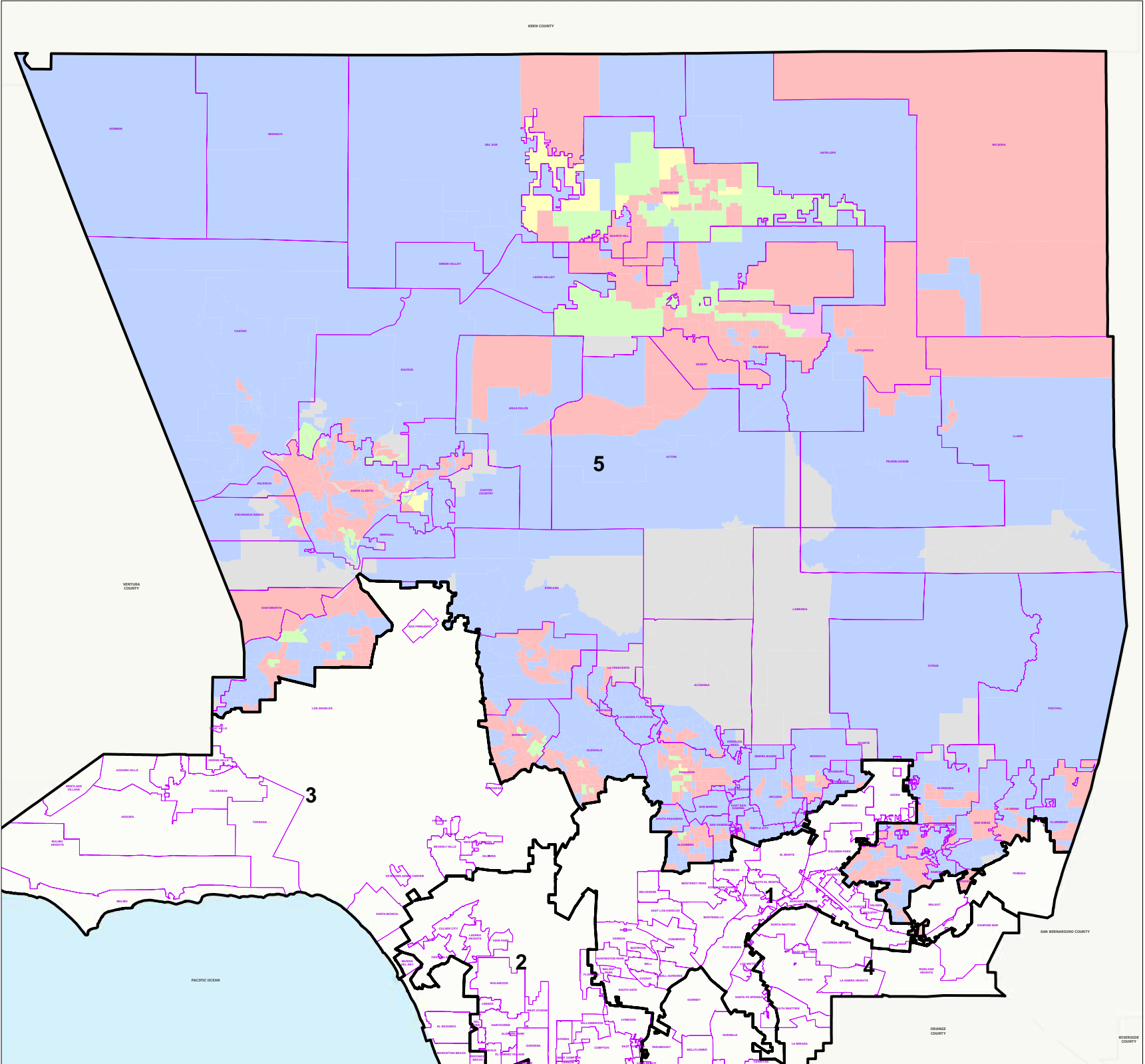


**2008 Presidential
General Election**

**5th Supervisorial District
Provisional Votes Cast
by Election Precinct**

Legend

-  Supervisorial District
-  Communities
- Provisional Votes**
-  0 Ballots cast
-  1 - 50 Ballots cast
-  51 - 100 Ballots cast
-  101 - 150 Ballots cast
-  151 - 200 Ballots cast
-  Over 201 Ballots cast



THIS MAP IS SUBJECT TO CHANGE WITHOUT NOTICE
CONTACT REGISTRAR-RECORDER/COUNTY CLERK
PRECINCTING SECTION, 12400 IMPERIAL HIGHWAY
NORWALK, CA 90650 TEL. No. (562) 462-2473



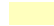
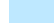

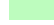
Data contained in this map is reproduced in whole or part
from the Thomas Brothers Maps Digital Database. This
map is copyrighted and reproduced with permission
granted by Thomas Brothers Maps. All rights reserved.

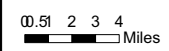
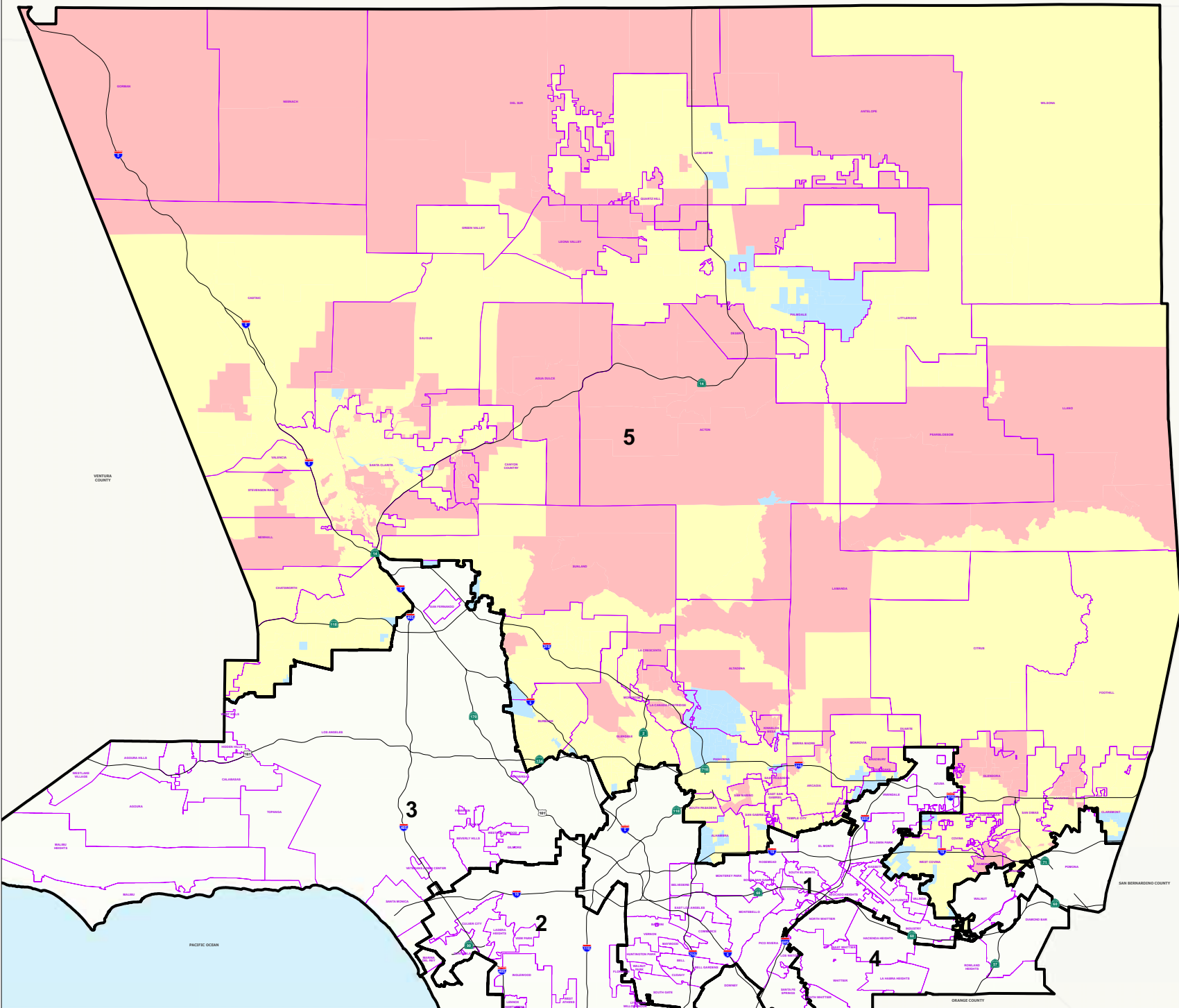


**2008 Presidential
General Election**

**5th Supervisorial District
Voters by Party
and Election Precinct**

Legend

-  Supervisorial District
-  Communities
- Voters by Party**
-  None
-  Democrat 50%+1
-  Republican 50%+1
-  Decline to state 50%+1



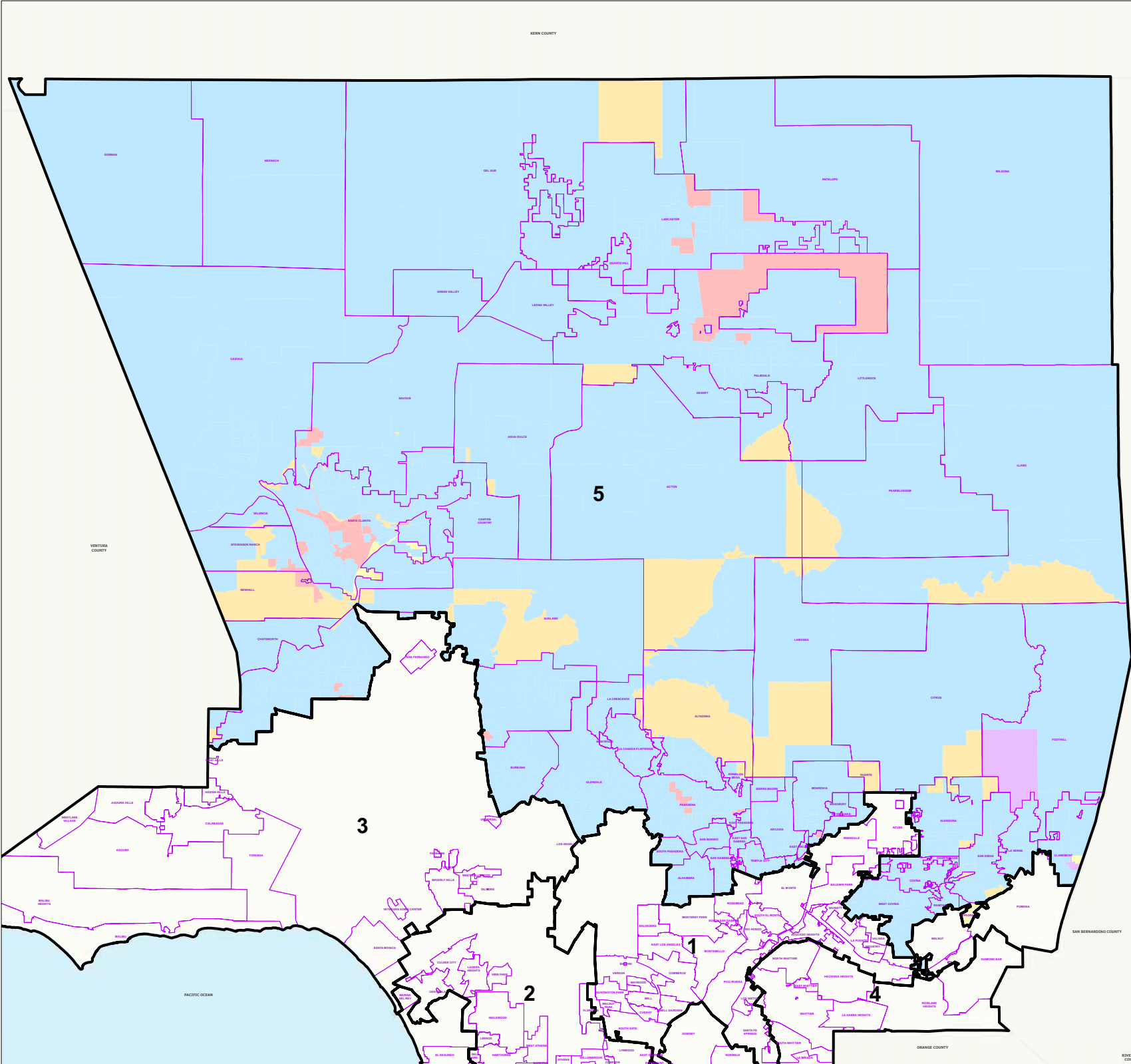
THIS MAP IS SUBJECT TO CHANGE WITHOUT NOTICE
CONTACT REGISTRAR-RECORDER/COUNTY CLERK
PRECINCTING SECTION, 12400 IMPERIAL HIGHWAY
NORWALK, CA 90650 TEL. No. (562) 462-2473

Data contained in this map is reproduced in whole or part
from the Thomas Brothers Maps Digital Database. This
map is copyrighted and reproduced with permission
granted by Thomas Brothers Maps. All rights reserved.



**2008 Presidential
General Election**

**5th Supervisorial District
Age 18-29 Votes cast
by Election Precinct**



Legend

Supervisorial District

Communities

Votes by Age

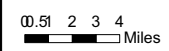
0 Percent

1-25%

26-50%

51-70%

Over 71%



THIS MAP IS SUBJECT TO CHANGE WITHOUT NOTICE
CONTACT REGISTRAR-RECORDER/COUNTY CLERK
PRECINCTING SECTION, 12400 IMPERIAL HIGHWAY
NORWALK, CA 90650 TEL. No. (562) 462-2473

Data contained in this map is reproduced in whole or part
from the Thomas Brothers Maps Digital Database. This
map is copyrighted and reproduced with permission
granted by Thomas Brothers Maps. All rights reserved.



**2008 Presidential
General Election**

**5th Supervisorial District
Age 30-39 Votes cast
by Election Precinct**

Legend

Supervisorial District

Communities

Voters by Age

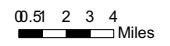
0 Percent

1-25%

26-50%

51-70%

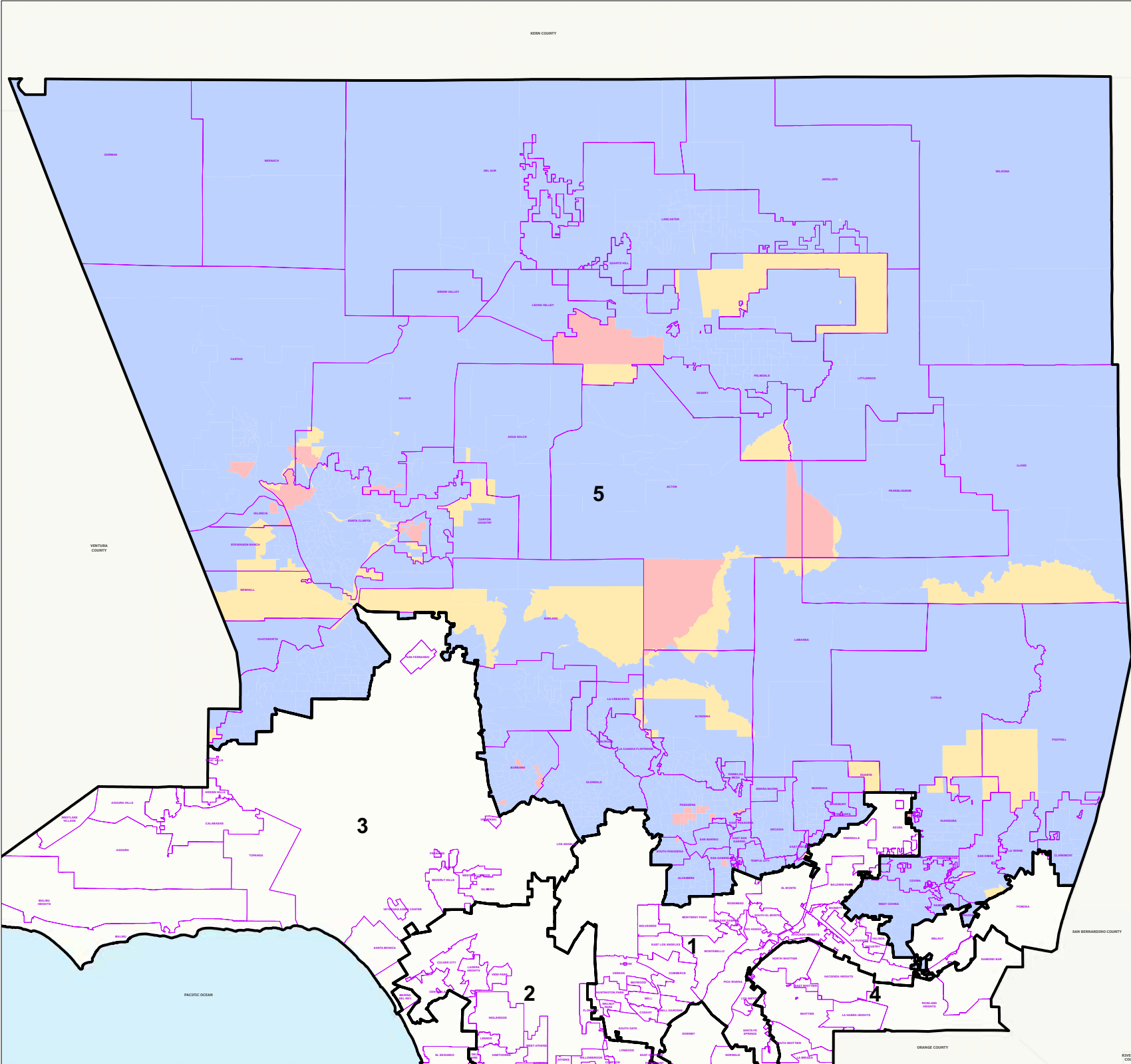
Over 71%



THIS MAP IS SUBJECT TO CHANGE WITHOUT NOTICE
CONTACT REGISTRAR-RECORDER/COUNTY CLERK
PRECINCTING SECTION, 12400 IMPERIAL HIGHWAY
NORWALK, CA 90650 TEL. No. (562) 462-2473

Data contained in this map is reproduced in whole or part
from the Thomas Brothers Maps Digital Database. This
map is copyrighted and reproduced with permission
granted by Thomas Brothers Maps. All rights reserved.

Thursday, January 8, 2009










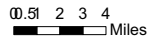
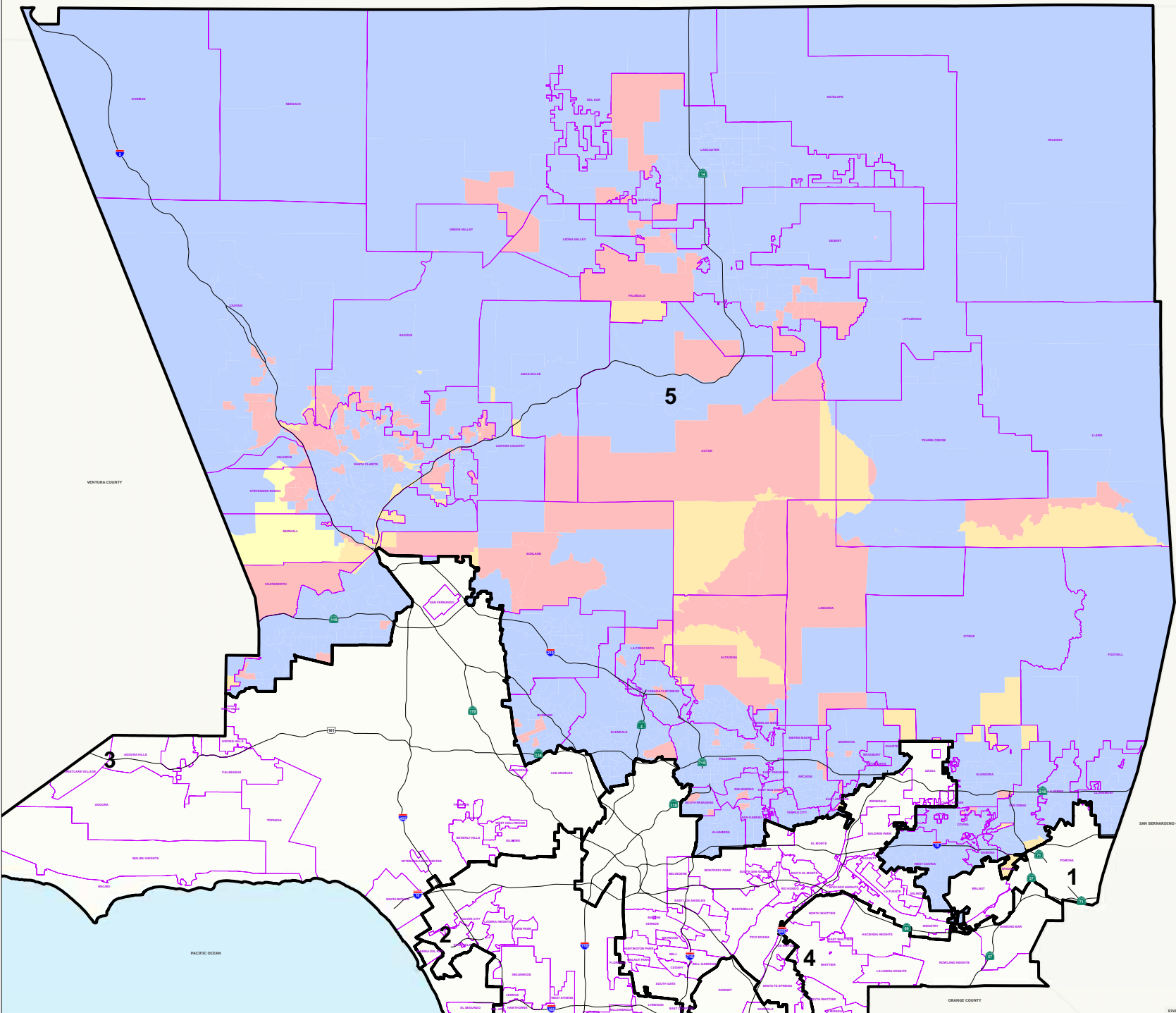


**2008 Presidential
General Election**

**5th Supervisorial District
Age 40-49 Votes Cast
by Election Precinct**

Legend

-  Supervisorial District
-  Communities
- Voters by Age 40-49**
-  0 Percent
-  1-25%
-  26-50%
-  51-75%
-  76-100%










THIS MAP IS SUBJECT TO CHANGE WITHOUT NOTICE
CONTACT REGISTRAR-RECORDER/COUNTY CLERK
PRECINCTING SECTION, 12400 IMPERIAL HIGHWAY
NORWALK, CA 90650 TEL. No. (562) 462-2473
Data contained in this map is reproduced in whole or part
from the Thomas Brothers Mass Digital Database. This
map is copyrighted and reproduced with permission
granted by Thomas Brothers Maps. All rights reserved.

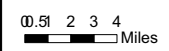
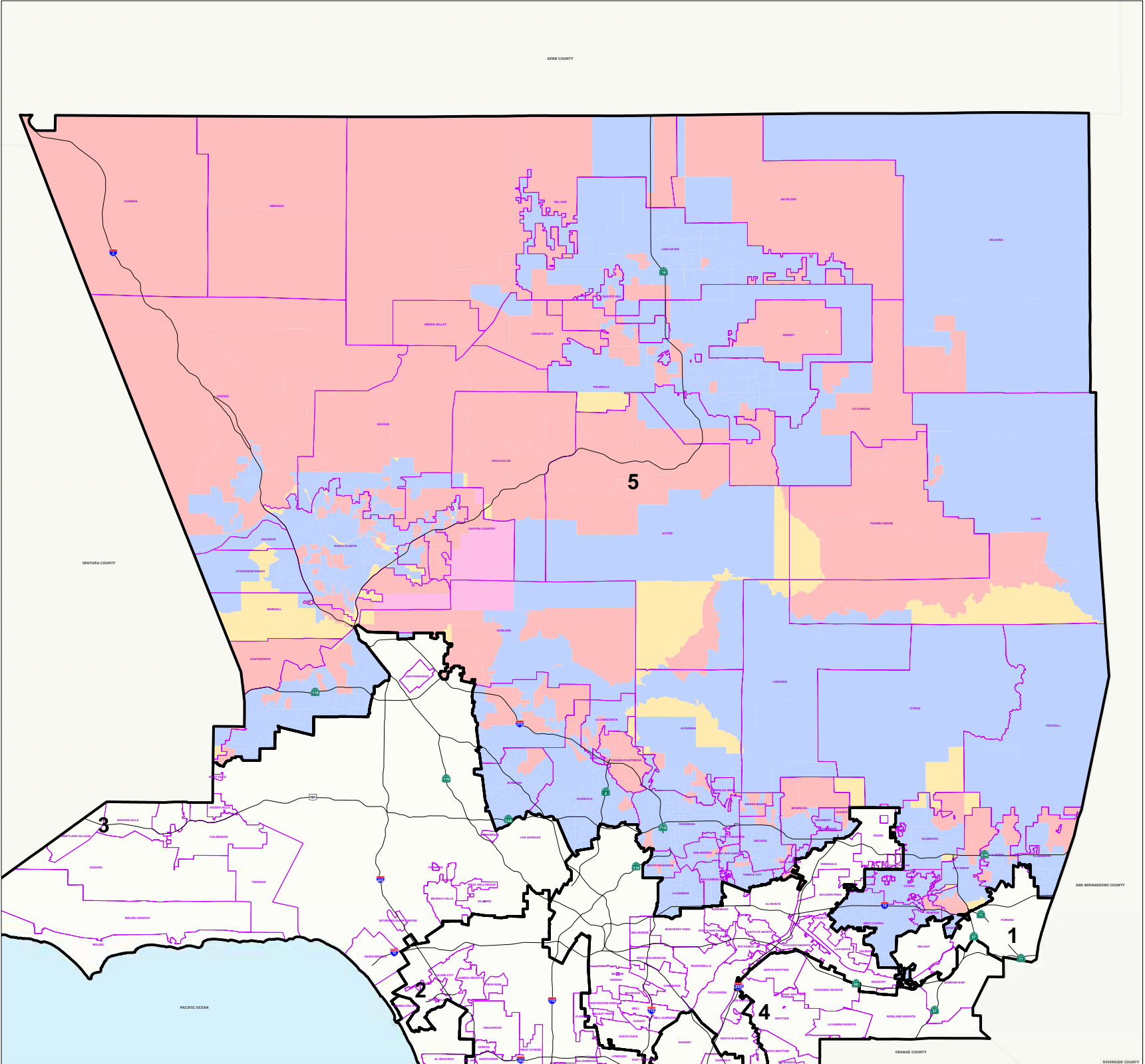


**2008 Presidential
General Election**

**5th Supervisorial District
Age 50-59 Votes Cast
by Election Precinct**

Legend

-  Supervisorial District
-  Communities
- Votes by Age 50-59**
-  0 Percent
-  1-25%
-  26-50%
-  51-75%
-  76-100%



THIS MAP IS SUBJECT TO CHANGE WITHOUT NOTICE
CONTACT REGISTRAR-RECORDER/COUNTY CLERK
PRECINCTING SECTION, 12400 IMPERIAL HIGHWAY
NORWALK, CA 90650 TEL. No. (562) 462-2473








Data contained in this map is reproduced in whole or part
from the Thomas Brothers Maps Digital Database. This
map is copyrighted and reproduced with permission
granted by Thomas Brothers Maps. All rights reserved.

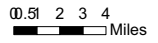
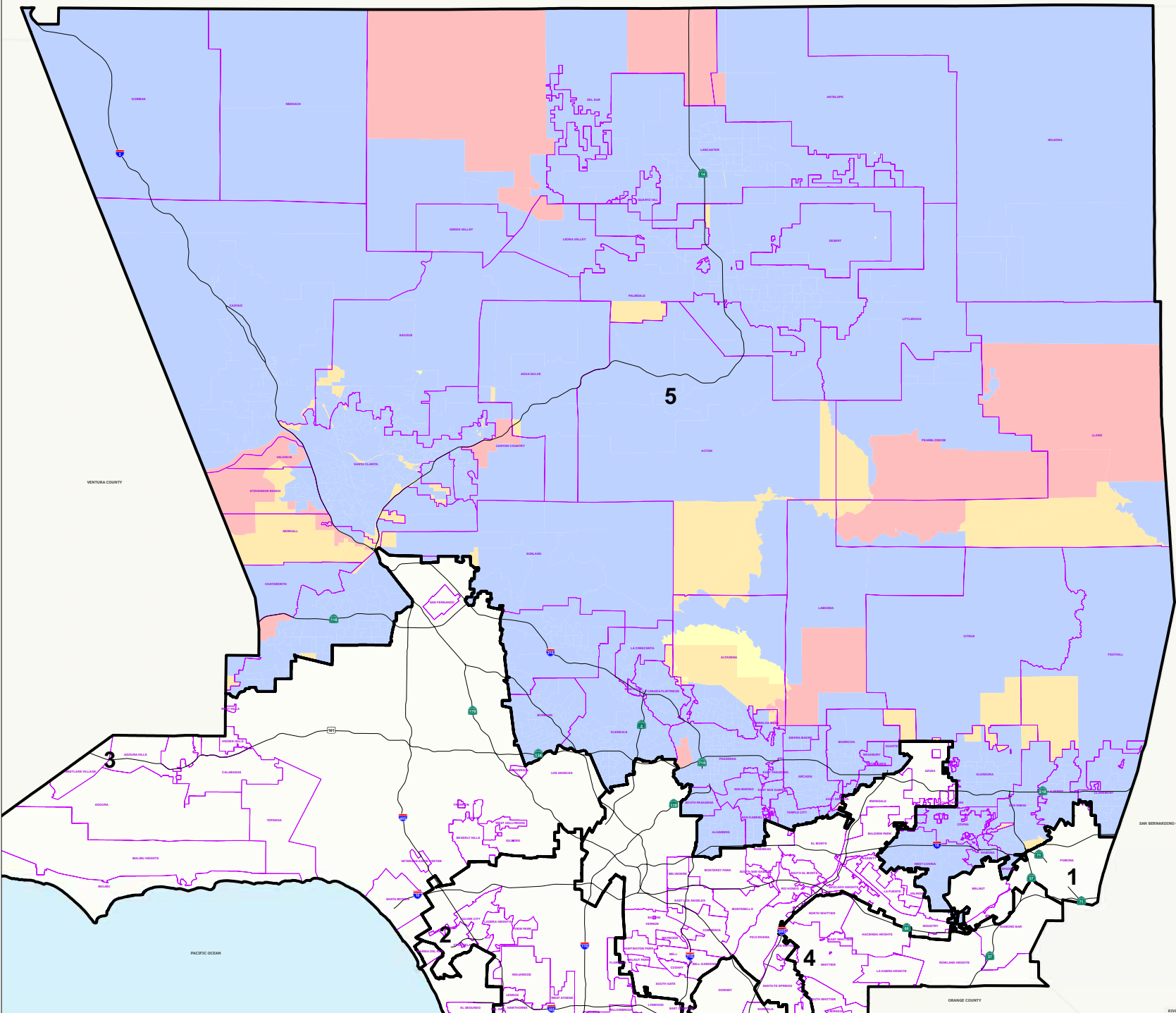


**2008 Presidential
General Election**

**5th Supervisorial District
Age 60-69 Votes Cast
by Election Precinct**

Legend

-  Supervisorial District
-  Communities
- Votes by Age 60-69**
-  0 Percent
-  1-25%
-  26-50%
-  51-75%
-  76-100%










THIS MAP IS SUBJECT TO CHANGE WITHOUT NOTICE
CONTACT REGISTRAR-RECORDER/COUNTY CLERK
PRECINCTING SECTION, 12400 IMPERIAL HIGHWAY
NORWALK, CA 90650 TEL. No. (562) 462-2473
Data contained in this map is reproduced in whole or part
from the Thomas Brothers Mass Digital Database. This
map is copyrighted and reproduced with permission
granted by Thomas Brothers Maps. All rights reserved.

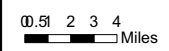
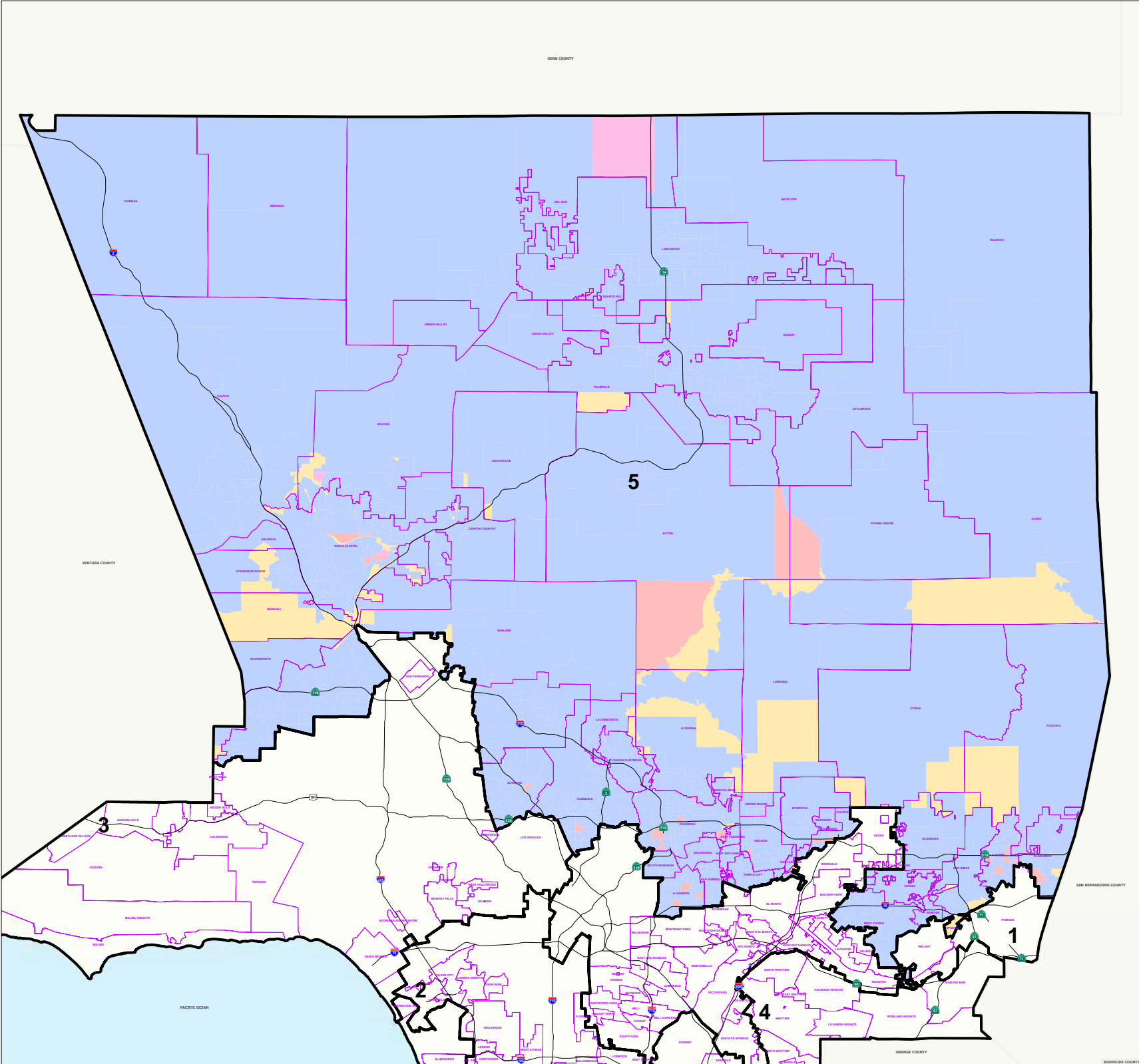


2008 Presidential General Election

5th Supervisorial District Age over 70 Votes Cast by Election Precinct

Legend

-  Supervisorial District
-  Communities
- Votes by Age Over 70**
-  0 Percent
-  1-25%
-  26-50%
-  51-75%
-  76-100%



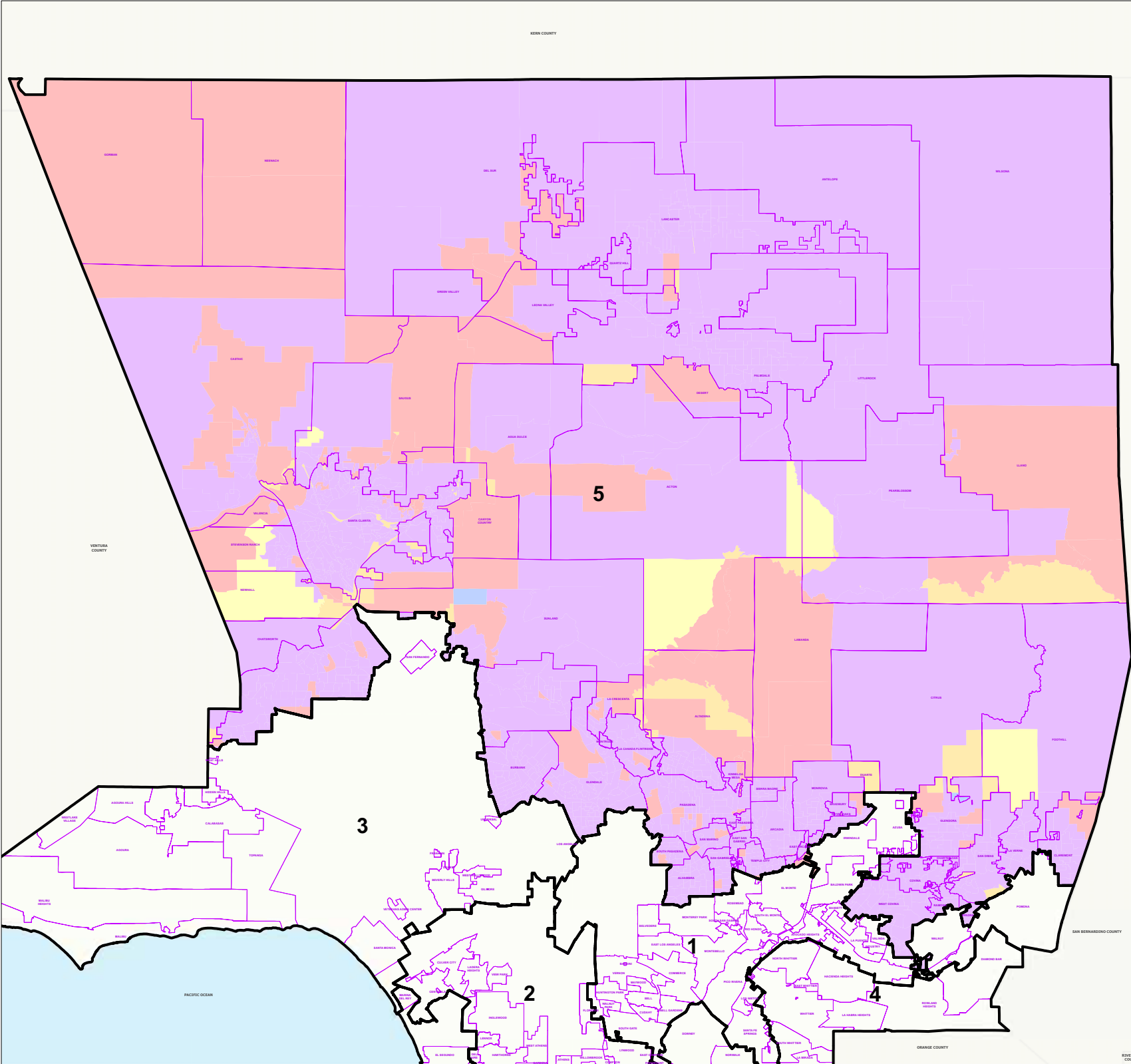
THIS MAP IS SUBJECT TO CHANGE WITHOUT NOTICE
CONTACT REGISTRAR-RECORDER/COUNTY CLERK
PRECINCTING SECTION, 12400 IMPERIAL HIGHWAY
NORWALK, CA 90650 TEL. No. (562) 462-2473

Data contained in this map is reproduced in whole or part
from the Thomas Brothers Mass Digital Database. This
map is copyrighted and reproduced with permission
granted by Thomas Brothers Maps. All rights reserved.



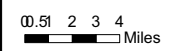
2008 Presidential General Election

5th Supervisorial District Female Votes Cast by Election Precinct



Legend

- Supervisorial District
- Communities
- Voters by Gender**
- 0 Percent
- 1-25%
- 26-50%
- 51-70%
- Over 71%



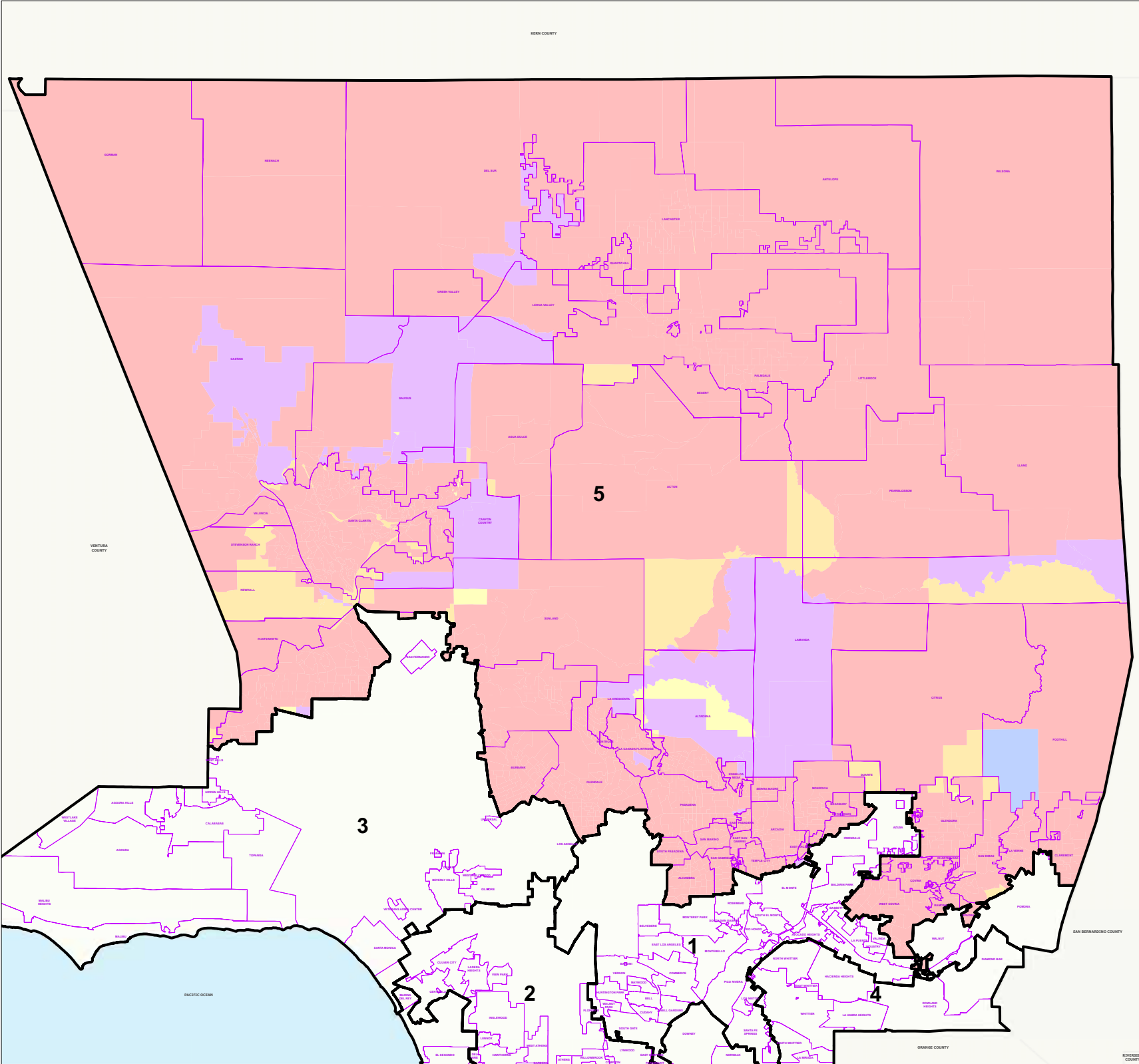
THIS MAP IS SUBJECT TO CHANGE WITHOUT NOTICE
CONTACT REGISTRAR-RECORDER/COUNTY CLERK
PRECINCTING SECTION, 12400 IMPERIAL HIGHWAY
NORWALK, CA 90650 TEL. No. (562) 462-2473

Data contained in this map is reproduced in whole or part
from the Thomas Brothers Maps Digital Database. This
map is copyrighted and reproduced with permission
granted by Thomas Brothers Maps. All rights reserved.










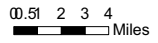
**2008 Presidential
General Election**

**5th Supervisorial District
Male Votes Cast
by Election Precinct**



Legend

-  Supervisorial District
-  Communities
- Votes by Gender**
-  0 Percent
-  1-25%
-  26-50%
-  51-70%
-  Over 71%



THIS MAP IS SUBJECT TO CHANGE WITHOUT NOTICE
CONTACT REGISTRAR-RECORDER/COUNTY CLERK
PRECINCTING SECTION, 12400 IMPERIAL HIGHWAY
NORWALK, CA 90650 TEL. No. (562) 462-2473

Data contained in this map is reproduced in whole or part
from the Thomas Brothers Maps Digital Database. This
map is copyrighted and reproduced with permission
granted by Thomas Brothers Maps. All rights reserved.