



ROSE INSTITUTE  
OF STATE AND LOCAL GOVERNMENT  

---

CLAREMONT MCKENNA COLLEGE

# Local Redistricting: Data, Tools, Outreach & Process

**Douglas Johnson**

Fellow

Rose Institute of State and Local Government

January 20, 2011



## Process

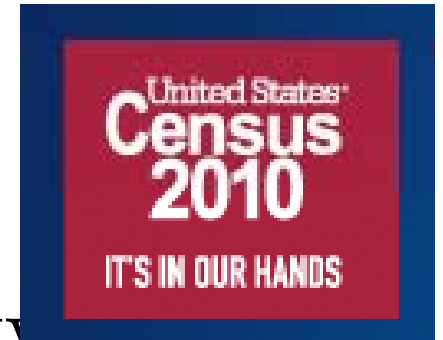


1. Prepare
  - Database
  - Decide on process
2. Outreach
  - “Blank slate” initial meetings
  - “Draft plan” discussion meetings
3. Choose a plan
  - Hearing & vote
  - By resolution or ordinance?
4. Implement
  - Local GIS system
  - Coordinate with County Registrar



## Demographic Data Sources

- 2010 Census
- 2009 and 2005-2009 American Community Surveys
- Census “Special Tabulation” on Citizen Voting Age Population
- California Statewide Database
- City / County / School District / Special District election results





# Understanding ACS data

Category	County Total Population	Availability
2009 ACS one-year data	400,000	Jurisdictions with Pop. 60,000+
2007-2009 ACS three-year data	392,000	Jurisdictions with Pop. 20,000+
2005-2009 ACS five-year data	387,000	Block groups and above
2010 Census PL94-171	Not yet known	Census blocks and above

Category	Total Population
2009 ACS one-year data	400,000
2008 ACS one-year data	390,000
2007 ACS one-year data	380,000
2006 ACS one-year data	370,000
2000 Census	320,000

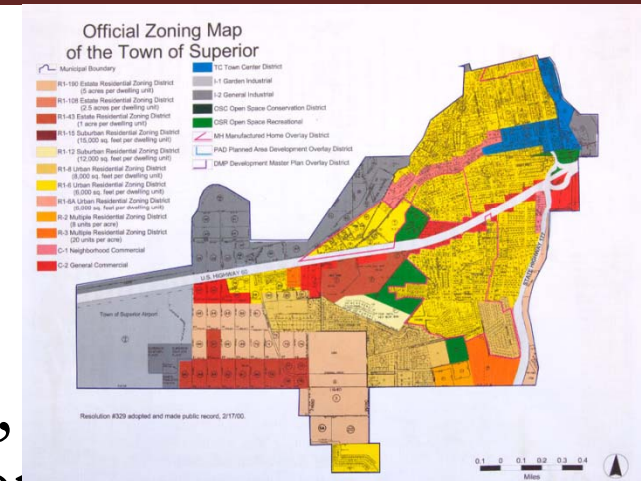
← 3-yr. data  
← 5-yr. data

Scheduled for February release: “Special Tabulation” on Citizen Voting Age data.



## Other Useful Data

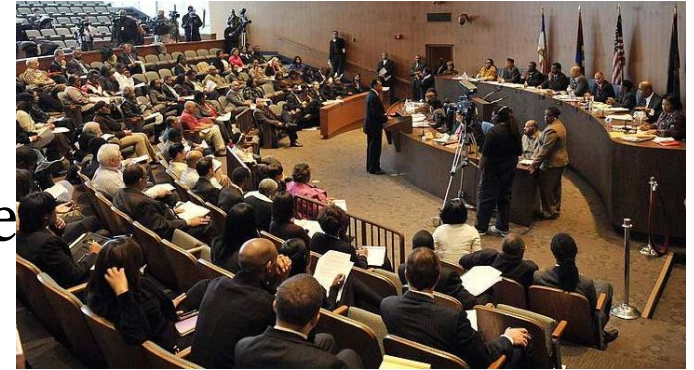
- Aerial imagery
- Key areas: precincts, attendance zones, neighborhoods, homeowner associations, and housing developments
- Key facilities: parks, hospitals, malls, jurisdiction facilities (schools, water plants, city hall, etc.)
- Zoning and planning regions, especially future development areas





## Outreach

- Level of public involvement varies by jurisdiction
- Reach out and empower the public
  - The Media, Individuals and Organizations
- Decision:
  - Public starts from a blank slate?
  - Present plans and ask for reactions?





## Outreach Goals

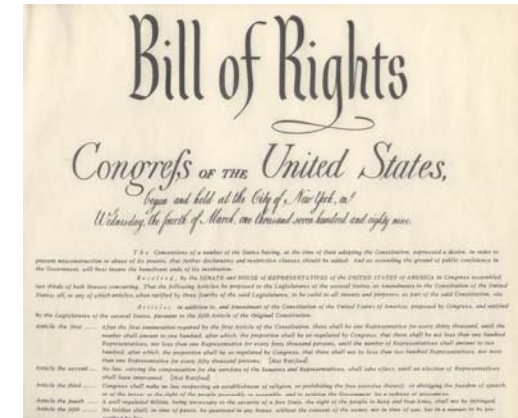
- Define “communities of interest”
- Empower the public to generate plans, maps and ideas
- Outreach to both community organizations and individuals
- Media briefings
- Heavy use of the web for information distribution
  - Additional options: Libraries? Schools? Newspapers? Radio Stations? Jurisdiction’s email or other contact list?





# Legal Requirements

- Equal Population
  - All deviations must be explained (no more 10% “safe harbor”)
- Federal Voting Rights Act
  - Ethnicity can be a factor, but not the “predominant” factor
- California Voting Rights Act

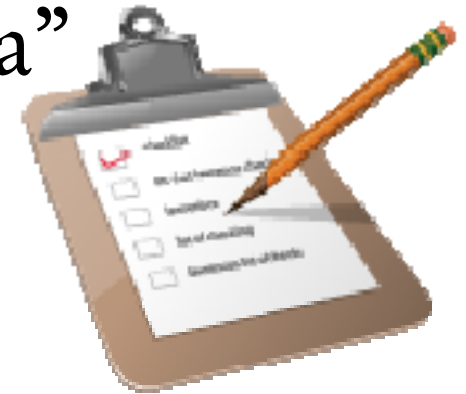






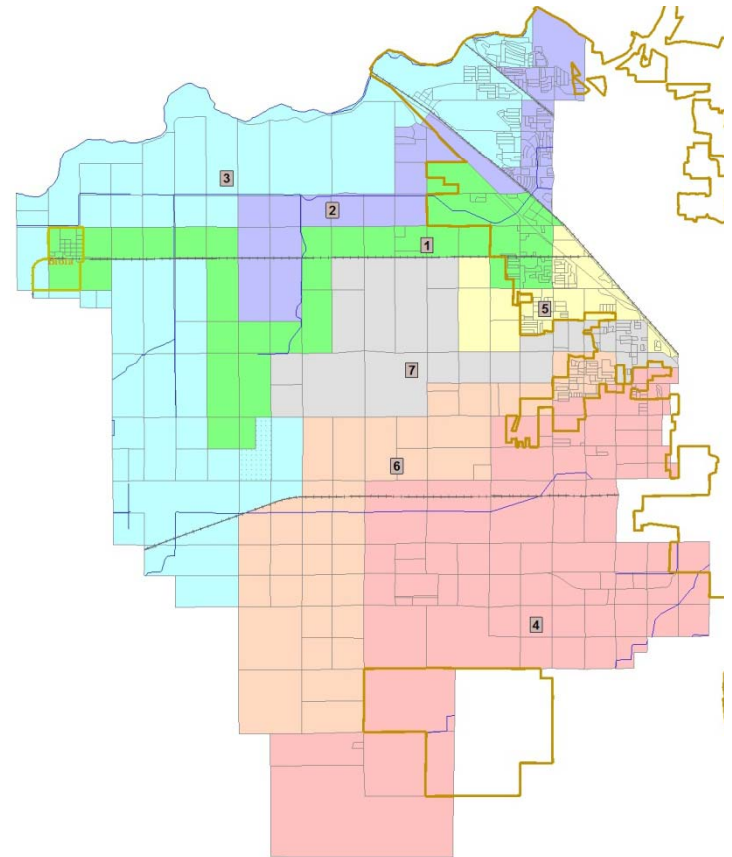
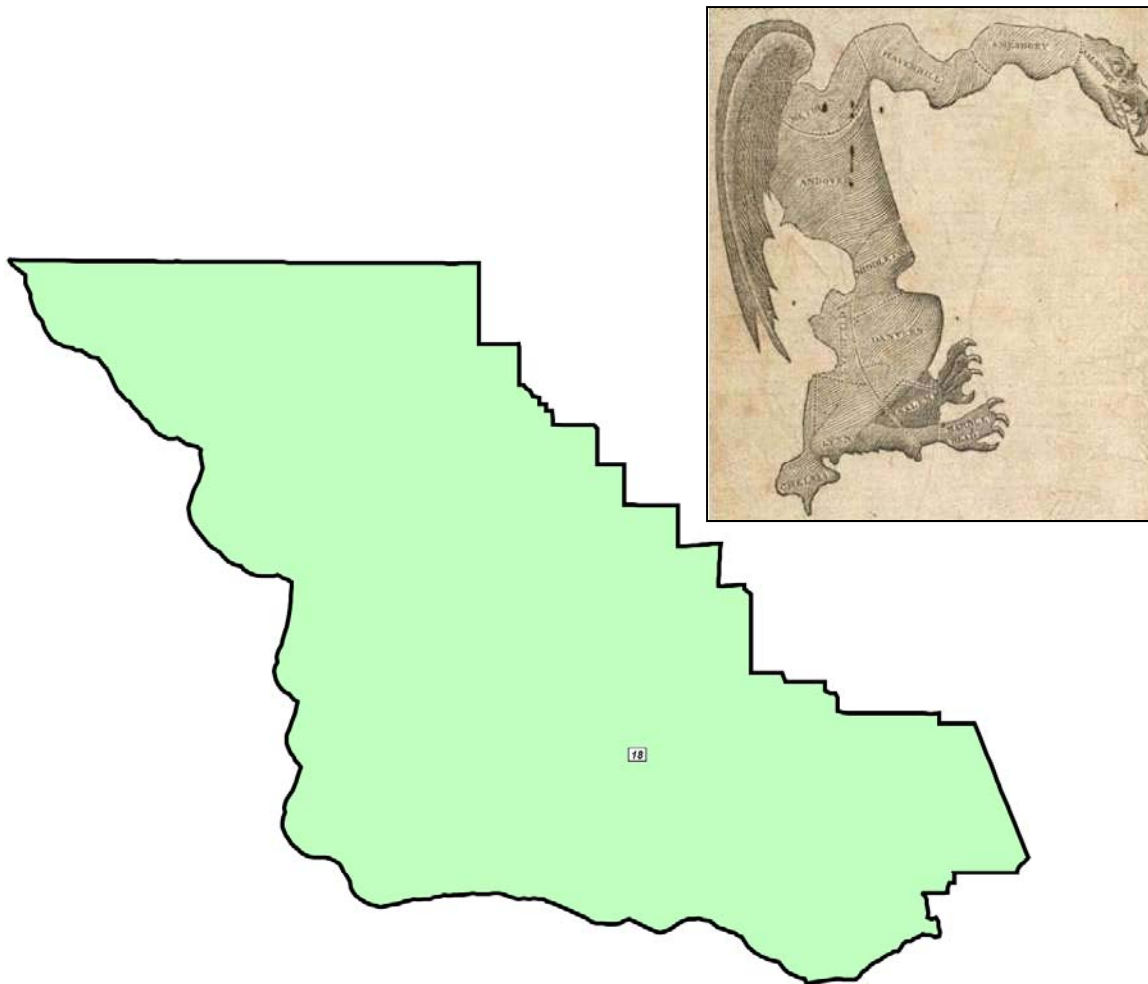
## “Traditional Redistricting Criteria”

- Communities of interest
- Visible (Natural & man-made) boundaries
- Compactness & contiguity
- Continuity in office
- Population growth
- Existing districts





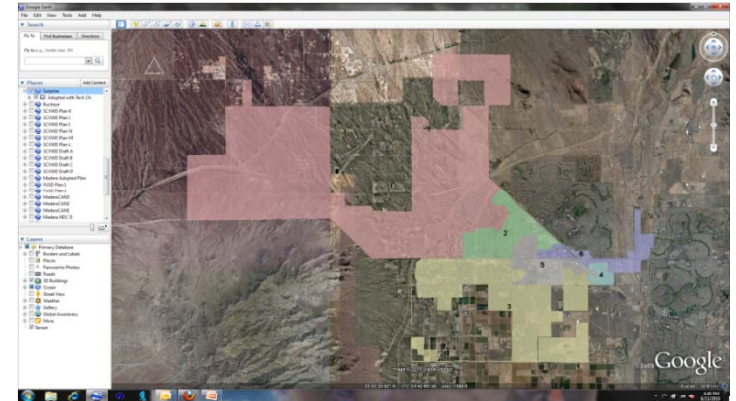
“Pretty” maps preferred, but “Ugly” can be OK





# Redistricting Tools

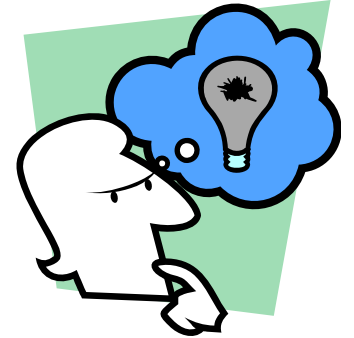
- Specialized Redistricting GIS software
- Interactive online maps
- Google Maps, Google Mapmaker & Google Earth
- Public Participation Kits: paper, excel, and online





## Remember

- ▶ The legal rules change often
- ▶ The data available – and the courts’ interest in different databases – change often
- ▶ The controversies and challenges of districting and redistricting often impact other issues facing the jurisdiction
- ▶ 2011 is not 2001





ROSE INSTITUTE  
OF STATE AND LOCAL GOVERNMENT  

---

CLAREMONT MCKENNA COLLEGE

# Extra Slides



# ROSE INSTITUTE OF STATE AND LOCAL GOVERNMENT

## CLAREMONT MCKENNA COLLEGE

	1	2	3	4	5	Total	1	2	3	4	5	Total
Total Pop	606,162	552,773	635,746	587,927	603,339	2,985,946						
Deviation	8,973	(44,416)	38,556	(9,263)	6,150		1.5%	-7.4%	6.5%	-1.6%	1.0%	13.9%
Hispanic	320,257	122,603	115,121	169,377	179,152	906,510	52.8%	22.2%	18.1%	28.8%	29.7%	30.4%
Not Hispanic	285,905	430,170	520,624	418,550	424,187	2,079,436	47.2%	77.8%	81.9%	71.2%	70.3%	69.6%
NH White	178,359	357,992	386,144	258,312	349,610	1,530,417	29.4%	64.8%	60.7%	43.9%	57.9%	51.3%
NHAfrican American	33,885	26,574	14,090	54,120	16,748	145,417	5.6%	4.8%	2.2%	9.2%	2.8%	4.9%
NH Native American	1,366	3,321	1,487	2,128	4,054	12,356	0.2%	0.6%	0.2%	0.4%	0.7%	0.4%
NH Asian	57,368	23,922	97,695	83,662	34,761	297,408	9.5%	4.3%	15.4%	14.2%	5.8%	10.0%
NH Pacific Islander	2,180	2,013	1,469	4,185	2,590	12,436	0.4%	0.4%	0.2%	0.7%	0.4%	0.4%
NH Some other race	1,187	990	2,116	1,707	2,031	8,031	0.2%	0.2%	0.3%	0.3%	0.3%	0.3%
NH Two or more races	11,561	15,357	17,623	14,436	14,394	73,371	1.9%	2.8%	2.8%	2.5%	2.4%	2.5%
Total VAP	447,858	411,020	480,689	465,731	448,802	2,254,100	73.9%	74.4%	75.6%	79.2%	74.4%	75.5%
NH White VAP	tbd	tbd	tbd	tbd	tbd	tbd	tbd	tbd	tbd	tbd	tbd	tbd
Hispanic VAP	210,891	77,023	74,544	112,545	114,532	589,535	47.1%	18.7%	15.5%	24.2%	25.5%	26.2%
African-Am VAP	27,866	18,653	10,809	38,713	12,997	109,038	6.2%	4.5%	2.2%	8.3%	2.9%	4.8%
Asian-Am VAP	46,776	19,699	76,780	70,193	28,200	241,649	10.4%	4.8%	16.0%	15.1%	6.3%	10.7%
Other VAP	tbd	tbd	tbd	tbd	tbd	tbd	tbd	tbd	tbd	tbd	tbd	tbd
Immigrants	195,593	88,032	155,968	161,612	126,931	728,135	32.3%	15.9%	24.5%	27.5%	21.0%	24.4%
Total Citizens	508,808	515,025	563,874	504,337	531,009	2,623,052	83.9%	93.2%	88.7%	85.8%	88.0%	87.8%
Total Citizen VAP – ACS	359,226	378,249	417,544	390,703	383,257	1,928,979	80.2%	92.0%	86.9%	83.9%	85.4%	85.6%
Hispanic CVAP – ACS	138,025	56,179	44,697	70,147	65,816	374,865	38.4%	14.9%	10.7%	18.0%	17.2%	19.4%
Non-Hisp White CVAP – ACS	150,502	277,921	296,202	221,091	272,323	1,218,039	41.9%	73.5%	70.9%	56.6%	71.1%	63.1%
Asian CVAP – ACS	35,857	15,253	55,984	50,919	21,109	179,122	10.0%	4.0%	13.4%	13.0%	5.5%	9.3%
African-Amer CVAP – ACS	26,785	18,145	10,207	35,831	12,714	103,682	7.5%	4.8%	2.4%	9.2%	3.3%	5.4%
Other CVAP – ACS	8,057	10,751	10,454	12,714	11,295	53,271	2.2%	2.8%	2.5%	3.3%	2.9%	2.8%
Total CVAP – Special Tabulation	tbd	tbd	tbd	tbd	tbd	tbd	tbd	tbd	tbd	tbd	tbd	tbd
Hispanic CVAP – Special Tabulation	tbd	tbd	tbd	tbd	tbd	tbd	tbd	tbd	tbd	tbd	tbd	tbd
Non-Hisp White CVAP – Special Tabulation	tbd	tbd	tbd	tbd	tbd	tbd	tbd	tbd	tbd	tbd	tbd	tbd
Asian CVAP – Special Tabulation	tbd	tbd	tbd	tbd	tbd	tbd	tbd	tbd	tbd	tbd	tbd	tbd
African-Amer .CVAP – Special Tabulation	tbd	tbd	tbd	tbd	tbd	tbd	tbd	tbd	tbd	tbd	tbd	tbd
Other CVAP – Special Tabulation	tbd	tbd	tbd	tbd	tbd	tbd	tbd	tbd	tbd	tbd	tbd	tbd
2008 Tot Reg	262,815	307,443	335,391	302,156	295,993	1,503,797						
2008 Hisp Reg	100,077	36,964	31,577	50,672	37,820	257,111	38.1%	12.0%	9.4%	16.8%	12.8%	17.1%
2008 Asn Reg	3,827	4,696	20,185	15,536	7,962	52,206	1.5%	1.5%	6.0%	5.1%	2.7%	3.5%
2008 Fil Reg	9,440	3,090	6,727	7,202	3,276	29,734	3.6%	1.0%	2.0%	2.4%	1.1%	2.0%
2008 Tot Votes	196,836	251,433	284,119	237,736	249,976	1,220,100	74.9%	81.8%	84.7%	78.7%	84.5%	81.1%
2008 Hisp Votes	70,040	27,483	24,883	36,911	29,271	188,588	35.6%	10.9%	8.8%	15.5%	11.7%	15.5%
2008 Asn Votes	2,834	3,527	15,658	11,080	6,251	39,350	1.4%	1.4%	5.5%	4.7%	2.5%	3.2%
2008 Fil Votes	6,997	2,375	5,348	5,383	2,639	22,742	3.6%	0.9%	1.9%	2.3%	1.1%	1.9%
2010 Gen Tot Reg	253,307	290,551	321,208	280,861	296,234	1,442,161						
2010G Dem	109,311	91,641	102,914	131,497	82,717	518,080	43.2%	31.5%	32.0%	46.8%	27.9%	35.9%
2010G Rep	71,386	125,136	123,998	67,931	134,609	523,060	28.2%	43.1%	38.6%	24.2%	45.4%	36.3%
2010G Oth	72,610	73,774	94,296	81,433	78,908	401,021	28.7%	25.4%	29.4%	29.0%	26.6%	27.8%



- Open:
  - Madera – demo plan
  - Google earth
  - Google Mapmaker
  - Google My Maps