
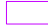



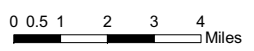




**2008 Presidential  
General Election**

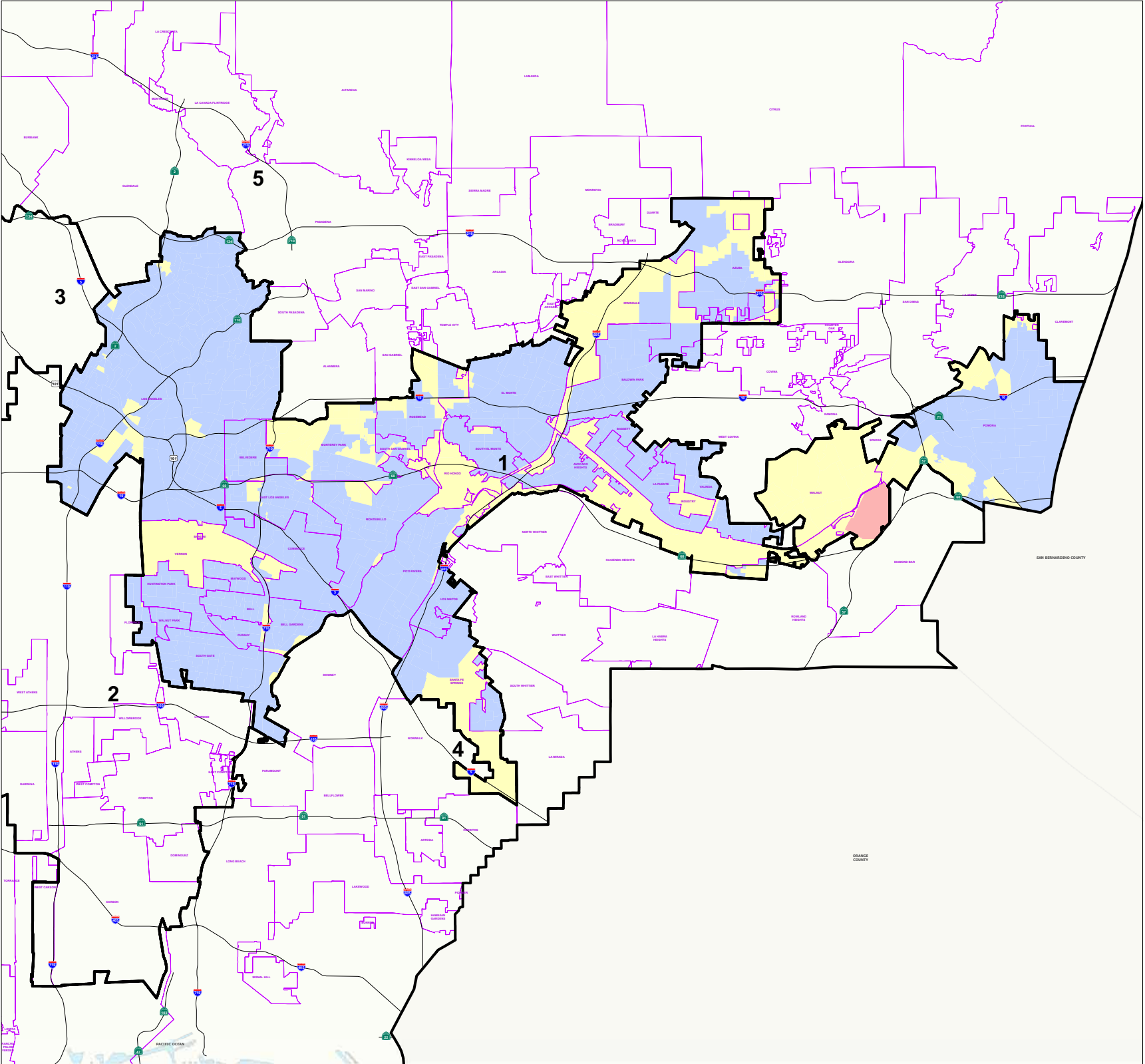
**1st Supervisorial District  
Votes for President  
over 50% by Election Precinct**

- Legend**
-  Supervisorial District
  -  Communities
  - Votes for President**
    -  Other
    -  Obama over 50%
    -  McCain over 50%



THIS MAP IS SUBJECT TO CHANGE WITHOUT NOTICE  
CONTACT REGISTRAR-RECORDER/COUNTY CLERK  
PRECINCTING SECTION, 12400 IMPERIAL HIGHWAY  
NORWALK, CA 90650 TEL. No. (562) 462-2473

Data contained in this map is reproduced in whole or part  
from the Thomas Brothers Maps Digital Database. This  
map is copyrighted and reproduced with permission  
granted by Thomas Brothers Maps. All rights reserved.





### 2008 Presidential General Election

### 1st Supervisorial District Votes for Obama by Election Precinct

#### Legend

Supervisorial District

Communities

#### Votes for President

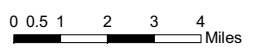
0 Percent

1 - 25%

26 - 50%

51 - 75%

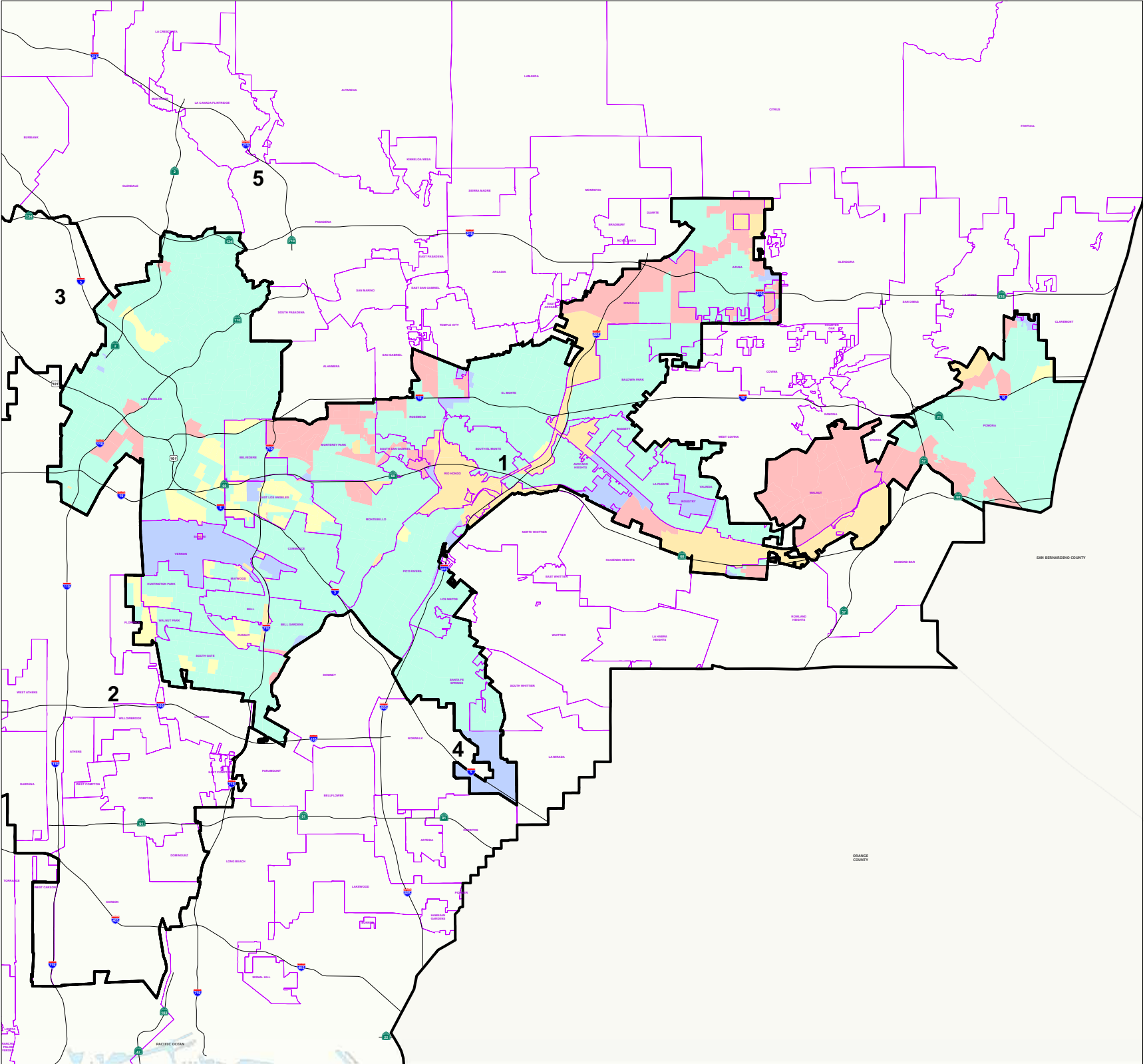
76 - 100%



THIS MAP IS SUBJECT TO CHANGE WITHOUT NOTICE  
CONTACT REGISTRAR-RECORDER/COUNTY CLERK  
PRECINCTING SECTION, 12400 IMPERIAL HIGHWAY  
NORWALK, CA 90650 TEL. No. (562) 462-2473

Data contained in this map is reproduced in whole or part  
from the Thomas Brothers Mass Digital Database. This  
map is copyrighted and reproduced with permission  
granted by Thomas Brothers Maps. All rights reserved.

Thursday, January 8, 2009






**2008 Presidential  
General Election**


**1st Supervisorial District  
Votes for McCain  
by Election Precinct**


**Legend**


 Supervisorial District

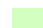
 Communities

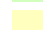
**Votes for President**

 0 Percent

 1 - 25%

 26 - 50%

 51 - 75%

 76 - 100%



0 0.5 1 2 3 4  
Miles

THIS MAP IS SUBJECT TO CHANGE WITHOUT NOTICE  
CONTACT REGISTRAR-RECORDER/COUNTY CLERK  
PRECINCTING SECTION, 12400 IMPERIAL HIGHWAY  
NORWALK, CA 90650 TEL. No. (562) 462-2473

Data contained in this map is reproduced in whole or part  
from the Thomas Brothers Maps Digital Database. This  
map is copyrighted and reproduced with permission  
granted by Thomas Brothers Maps. All rights reserved.


Thursday, January 8, 2009



**2008 Presidential  
General Election**


**1st Supervisorial District  
New Registered Voters  
Age 18-29 by Election Precinct**

**Legend**

 Supervisorial District


 Communities

**New Registered Voters by Age 18-29**

 0 Percent

 1-25%

 26-50%

 51-75%

 76-100%



0 0.36.7 1.4 2.1 2.8  
Miles

THIS MAP IS SUBJECT TO CHANGE WITHOUT NOTICE  
CONTACT REGISTRAR-RECORDER/COUNTY CLERK  
PRECINCTING SECTION, 12400 IMPERIAL HIGHWAY  
NORWALK, CA 90650 TEL. No. (562) 462-2473

Data contained in this map is reproduced in whole or part  
from the Thomas Brothers Maps Digital Database. This  
map is copyrighted and reproduced with permission  
granted by Thomas Brothers Maps. All rights reserved.

Thursday, January 8, 2009



**2008 Presidential  
General Election**

**1st Supervisorial District  
New Registered Voters  
Age 30-39 by Election Precinct**

**Legend**

Supervisorial District

Communities

**New Registered Voters by Age 30-39**

0 Percent

1-25%

26-50%

51-75%

76-100%



0.36.7 1.4 2.1 2.8  
 Miles

THIS MAP IS SUBJECT TO CHANGE WITHOUT NOTICE  
CONTACT REGISTRAR-RECORDER/COUNTY CLERK  
PRECINCTING SECTION, 12400 IMPERIAL HIGHWAY  
NORWALK, CA 90650 TEL. No. (562) 462-2473

Data contained in this map is reproduced in whole or part  
from the Thomas Brothers Maps Digital Database. This  
map is copyrighted and reproduced with permission  
granted by Thomas Brothers Maps. All rights reserved.


Thursday, January 8, 2009




**2008 Presidential  
General Election**

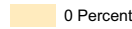
**1st Supervisorial District  
New Registrants Age 40-49  
by Election Precinct**


**Legend**

 Supervisorial District

 Communities


**New Registrants Age 40-49**

 0 Percent

 1-25%

 26-50%

 51-75%

 76-100%



0 0.2 0.4 0.6 0.8 1.0  
Miles

THIS MAP IS SUBJECT TO CHANGE WITHOUT NOTICE  
CONTACT REGISTRAR-RECORDER/COUNTY CLERK  
PRECINCTING SECTION, 12400 IMPERIAL HIGHWAY  
NORWALK, CA 90650 TEL. No. (562) 462-2473

Data contained in this map is reproduced in whole or part  
from the Thomas Brothers Maps Digital Database. This  
map is copyrighted and reproduced with permission  
granted by Thomas Brothers Maps. All rights reserved.

Thursday, January 8, 2009



**2008 Presidential  
General Election**

**1st Supervisorial District  
New Registrants Age 50-59  
by Election Precinct**

**Legend**

Supervisorial District

Communities

**New Registrants Age 50-59**

0 Percent

1-25%

26-50%

51-75%

76-100%

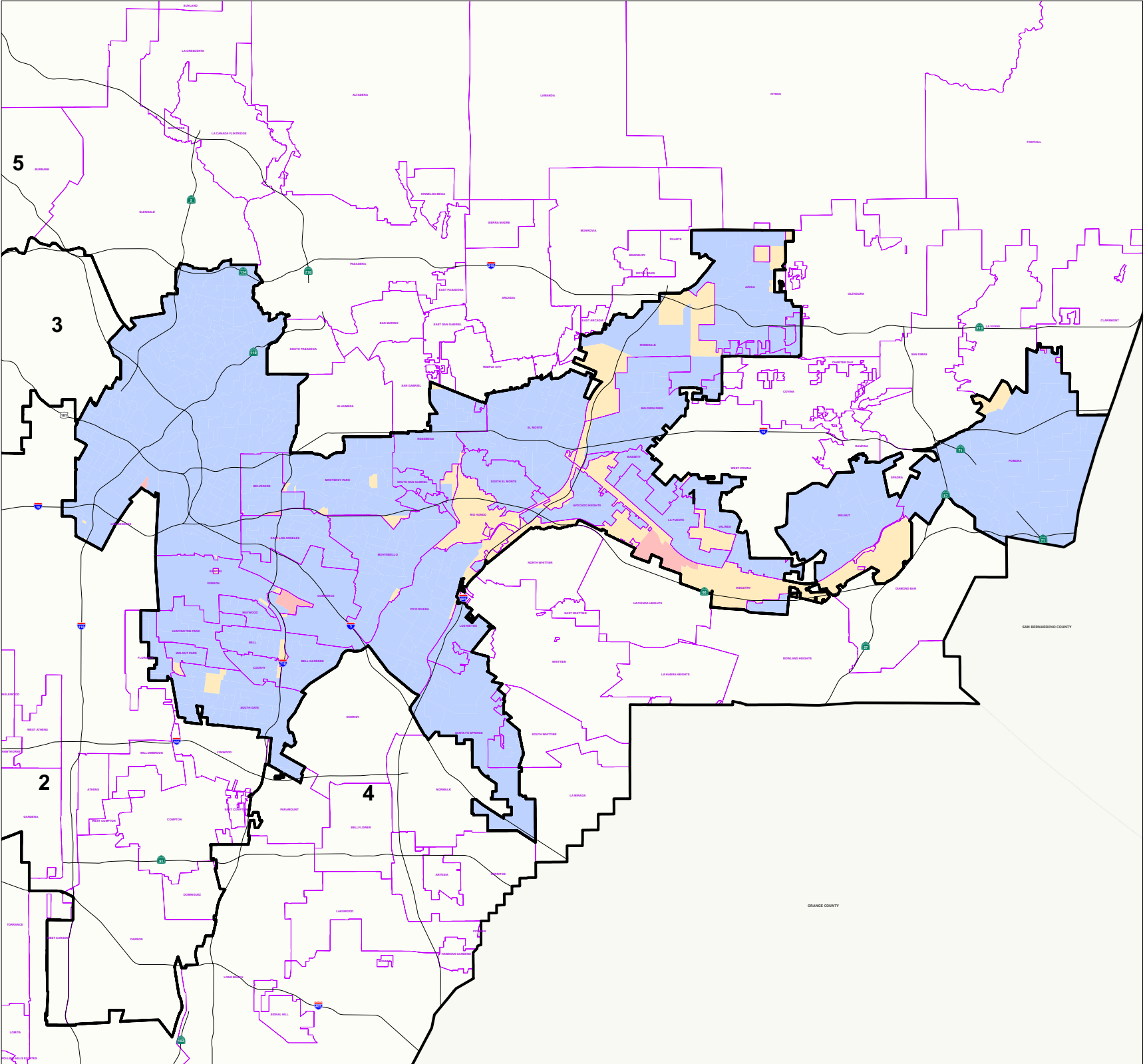


0 0.2 0.4 0.6 0.8 1.0  
Miles

THIS MAP IS SUBJECT TO CHANGE WITHOUT NOTICE  
CONTACT REGISTRAR-RECORDER/COUNTY CLERK  
PRECINCTING SECTION, 12400 IMPERIAL HIGHWAY  
NORWALK, CA 90650 TEL. No. (562) 462-2473

Data contained in this map is reproduced in whole or part  
from the Thomas Brothers Maps Digital Database. This  
map is copyrighted and reproduced with permission  
granted by Thomas Brothers Maps. All rights reserved.

Thursday, January 8, 2009






**2008 Presidential  
General Election**


**1st Supervisorial District  
New Registrants Age 60-69  
by Election Precinct**

**Legend**

 Supervisorial District

 Communities


**New Registrants Age 60-69**

 0 Percent

 1-25%

 26-50%

 51-75%

 76-100%

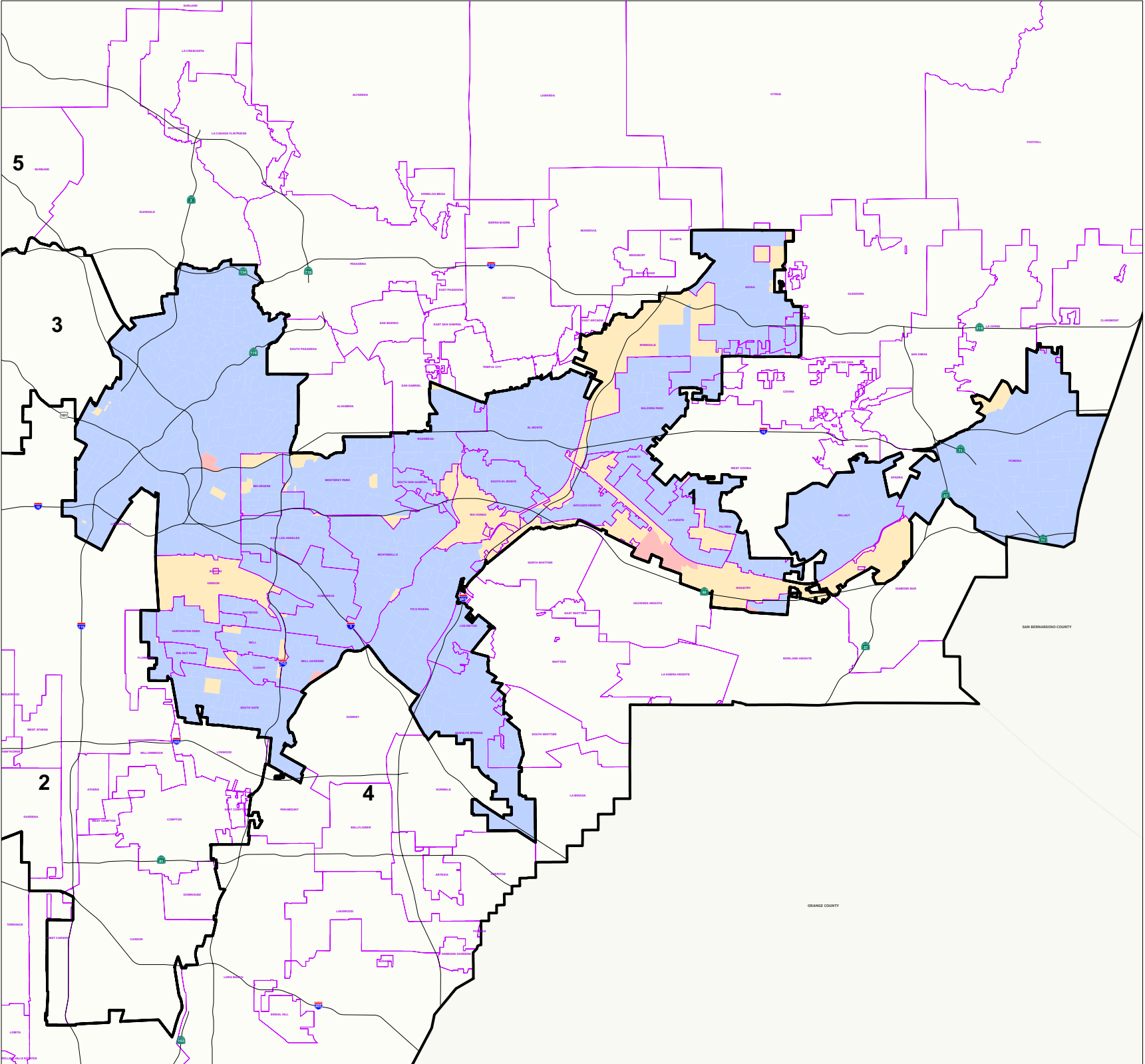


0 0.2 0.4 0.6 0.8 1.0  
Miles

THIS MAP IS SUBJECT TO CHANGE WITHOUT NOTICE  
CONTACT REGISTRAR-RECORDER/COUNTY CLERK  
PRECINCTING SECTION, 12400 IMPERIAL HIGHWAY  
NORWALK, CA 90650 TEL. No. (562) 462-2473

Data contained in this map is reproduced in whole or part  
from the Thomas Brothers Maps Digital Database. This  
map is copyrighted and reproduced with permission  
granted by Thomas Brothers Maps. All rights reserved.

Thursday, January 8, 2009








**2008 Presidential  
General Election**


**1st Supervisorial District  
New Registrants Age over 70  
by Election Precinct**

**Legend**

 Supervisorial District

 Communities

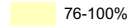
**New Registrants Age over 70**

 0 Percent

 1-25%

 26-50%

 51-75%

 76-100%



0 0.2 0.4 0.6 0.8 1.0 1.2 1.4 1.6 1.8 2.0 Miles

0 0.2 0.4 0.6 0.8 1.0 1.2 1.4 1.6 1.8 2.0 Miles

THIS MAP IS SUBJECT TO CHANGE WITHOUT NOTICE  
CONTACT REGISTRAR-RECORDER/COUNTY CLERK  
PRECINCTING SECTION, 12400 IMPERIAL HIGHWAY  
NORWALK, CA 90650 TEL. No. (562) 462-2473

Data contained in this map is reproduced in whole or part  
from the Thomas Brothers Maps Digital Database. This  
map is copyrighted and reproduced with permission  
granted by Thomas Brothers Maps. All rights reserved.






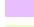
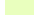
Thursday, January 8, 2009

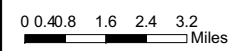


**2008 Presidential  
General Election**

**1st Supervisorial District  
Percentage of Mail In Votes  
by Election Precinct**

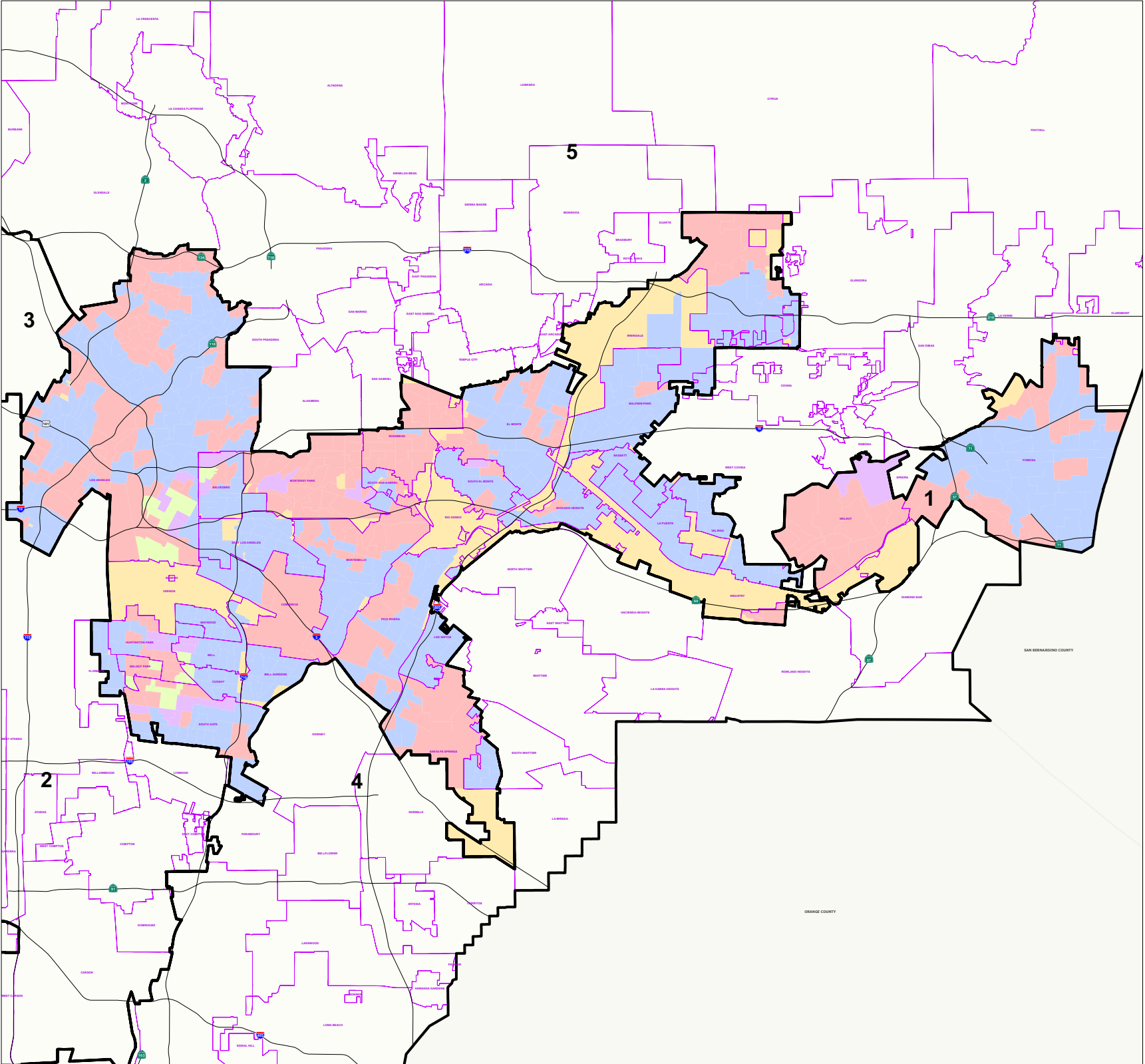
**Legend**

-  Supervisorial District
-  Communities
- Percent Mail In**
-  0 Percent
-  1-25%
-  26-50%
-  51-75%
-  76-100%



THIS MAP IS SUBJECT TO CHANGE WITHOUT NOTICE  
CONTACT REGISTRAR-RECORDER/COUNTY CLERK  
PRECINCTING SECTION, 12400 IMPERIAL HIGHWAY  
NORWALK, CA 90650 TEL. No. (562) 462-2473

Data contained in this map is reproduced in whole or part  
from the Thomas Brothers Maps Digital Database. This  
map is copyrighted and reproduced with permission  
granted by Thomas Brothers Maps. All rights reserved.





**2008 Presidential  
General Election**

**1st Supervisorial District  
Percentage of Votes at Poll  
by Election Precinct**

**Legend**

Supervisorial District

Communities

**Percent Votes Cast at Poll**

0 Percent

1-25%

26-50%

51-75%

76-100%

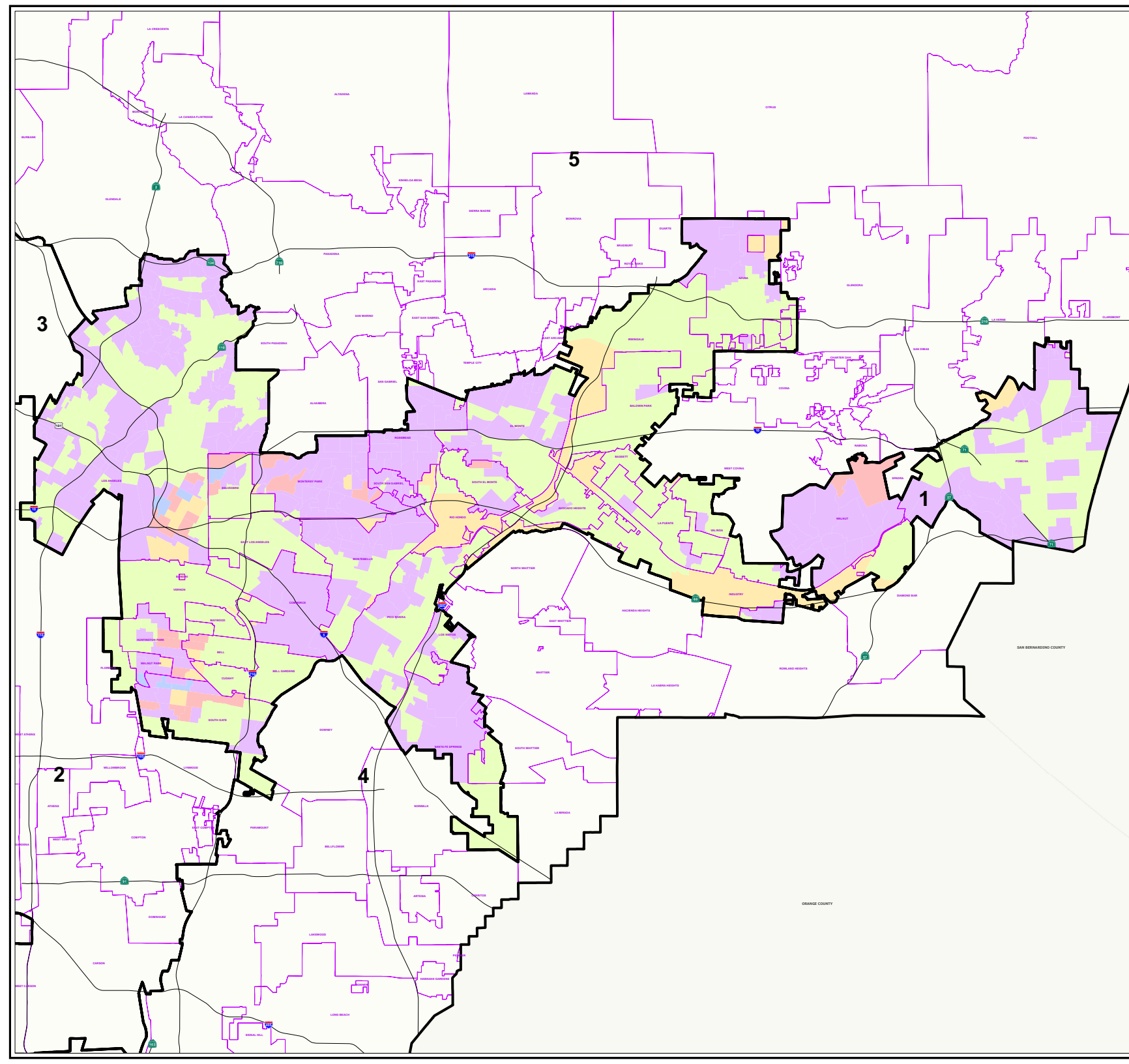


0 0.4 0.8 1.6 2.4 3.2  
Miles

THIS MAP IS SUBJECT TO CHANGE WITHOUT NOTICE  
CONTACT REGISTRAR-RECORDER/COUNTY CLERK  
PRECINCTING SECTION, 12400 IMPERIAL HIGHWAY  
NORWALK, CA 90650 TEL. No. (562) 462-2473

Data contained in this map is reproduced in whole or part  
from the Thomas Brothers Maps Digital Database. This  
map is copyrighted and reproduced with permission  
granted by Thomas Brothers Maps. All rights reserved.

Thursday, January 8, 2009






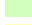




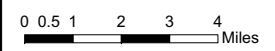


**2008 Presidential  
General Election**

**1st Supervisorial District  
Provisional Votes Cast  
by Election Precinct**

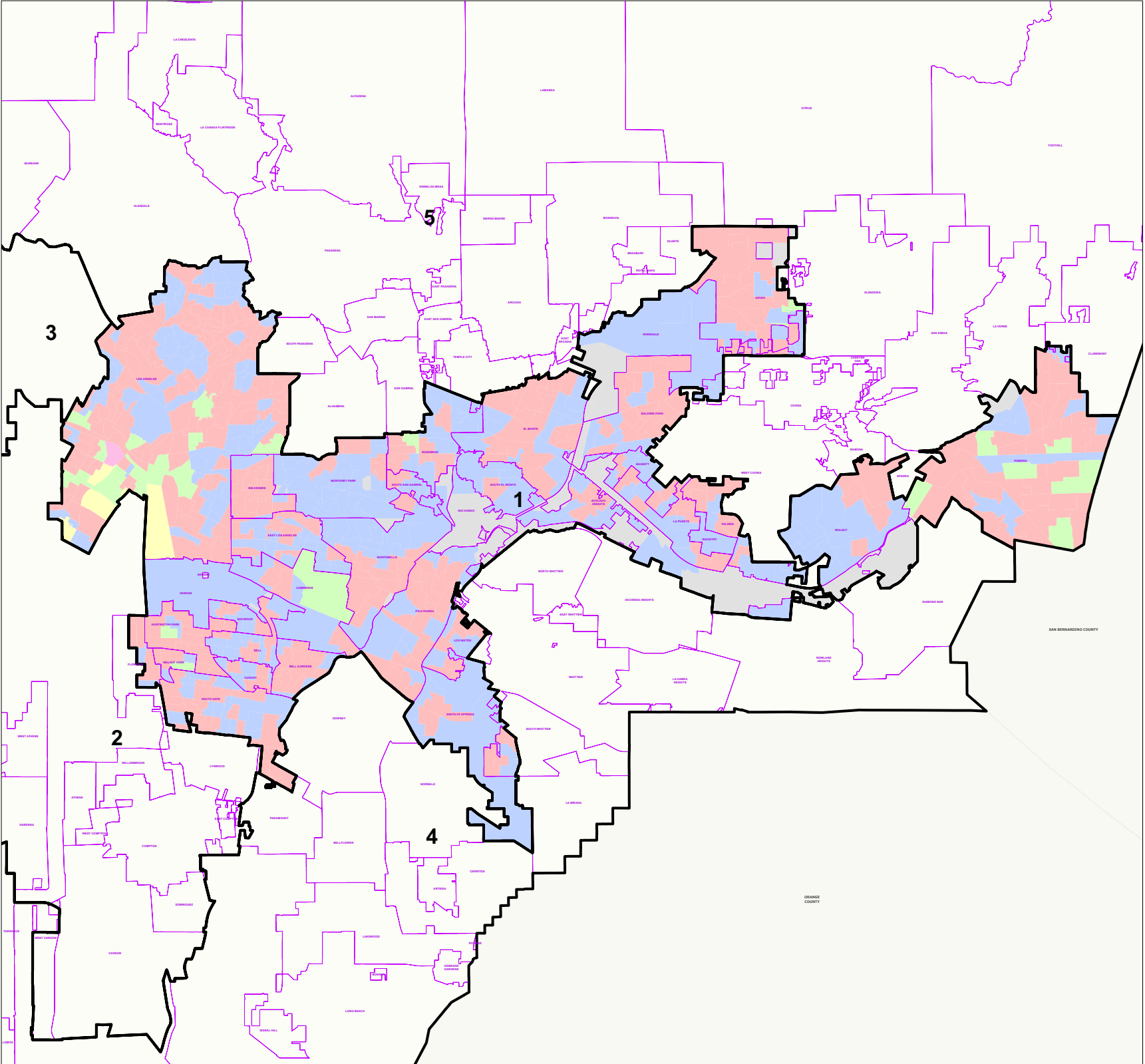
**Legend**

-  Supervisorial District
-  Communities
- Provisional Votes**
-  0 Ballots cast
-  1 - 50 Ballots cast
-  51 - 100 Ballots cast
-  101 - 150 Ballots cast
-  151 - 200 Ballots cast
-  Over 201 Ballots cast



THIS MAP IS SUBJECT TO CHANGE WITHOUT NOTICE  
CONTACT REGISTRAR-RECORDER/COUNTY CLERK  
PRECINCTING SECTION, 12400 IMPERIAL HIGHWAY  
NORWALK, CA 90650 TEL. No. (562) 462-2473

Data contained in this map is reproduced in whole or part  
from the Thomas Brothers Map Digital Database. This  
map is copyrighted and reproduced with permission  
granted by Thomas Brothers Maps. All rights reserved.





**2008 Presidential  
General Election**

**1st Supervisorial District  
Voters by Party  
and Election Precinct**


**Legend**


 Supervisorial District


 Communities


**Voters by Party**

**Party**

 None

 Democrat 50%+1

 Republican 50%+1

 Decline to state 50%+1



00.36.7 1.4 2.1 2.8  
Miles

THIS MAP IS SUBJECT TO CHANGE WITHOUT NOTICE  
CONTACT REGISTRAR-RECORDER/COUNTY CLERK  
PRECINCTING SECTION, 12400 IMPERIAL HIGHWAY  
NORWALK, CA 90650 TEL. No. (562) 462-2473

Data contained in this map is reproduced in whole or part  
from the Thomas Brothers Maps Digital Database. This  
map is copyrighted and reproduced with permission  
granted by Thomas Brothers Maps. All rights reserved.


Thursday, January 8, 2009




**2008 Presidential  
General Election**


**1st Supervisorial District  
Age 18-29 Votes cast  
by Election Precinct**


**Legend**


 Supervisorial District


 Communities

**Votes by Age**

 0 Percent

 1-25%

 26-50%

 51-70%

 Over 71%



0 0.4 0.9 1.8 2.7 3.6  
Miles

THIS MAP IS SUBJECT TO CHANGE WITHOUT NOTICE  
CONTACT REGISTRAR-RECORDER/COUNTY CLERK  
PRECINCTING SECTION, 12400 IMPERIAL HIGHWAY  
NORWALK, CA 90650 TEL. No. (562) 462-2473

Data contained in this map is reproduced in whole or part  
from the Thomas Brothers Maps Digital Database. This  
map is copyrighted and reproduced with permission  
granted by Thomas Brothers Maps. All rights reserved.


Thursday, January 8, 2009




**2008 Presidential  
General Election**


**1st Supervisorial District  
Age 30-39 Votes cast  
by Election Precinct**


**Legend**


 Supervisorial District


 Communities

**Voters by Age**

 0 Percent

 1-25%

 26-50%

 51-70%

 Over 71%

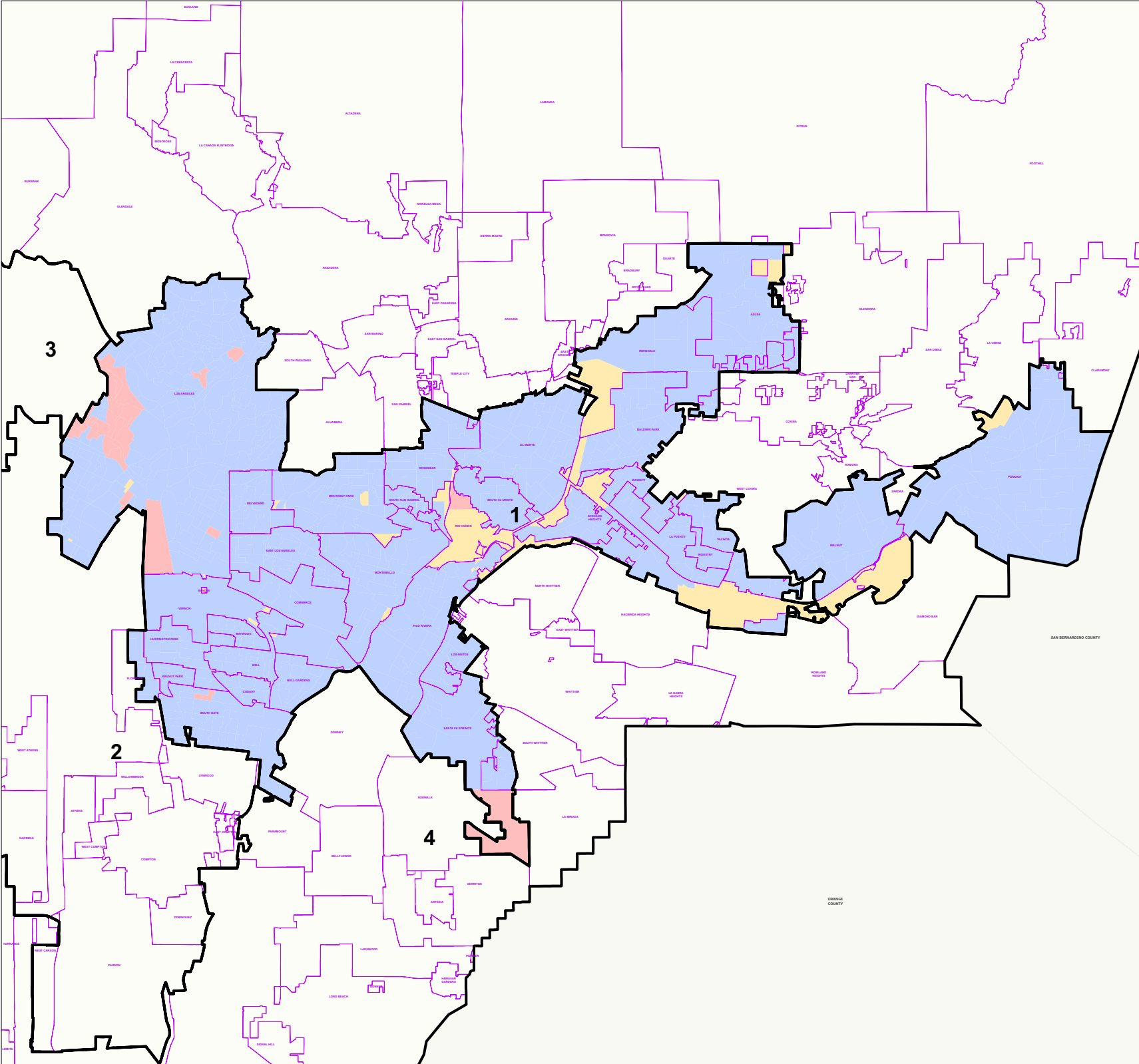


0 0.4 0.9 1.8 2.7 3.6  
Miles

THIS MAP IS SUBJECT TO CHANGE WITHOUT NOTICE  
CONTACT REGISTRAR-RECORDER/COUNTY CLERK  
PRECINCTING SECTION, 12400 IMPERIAL HIGHWAY  
NORWALK, CA 90650 TEL. No. (562) 462-2473

Data contained in this map is reproduced in whole or part  
from the Thomas Brothers Maps Digital Database. This  
map is copyrighted and reproduced with permission  
granted by Thomas Brothers Maps. All rights reserved.

Thursday, January 8, 2009












**2008 Presidential  
General Election**

**1st Supervisorial District  
Age 40-49 Votes Cast  
by Election Precinct**

**Legend**

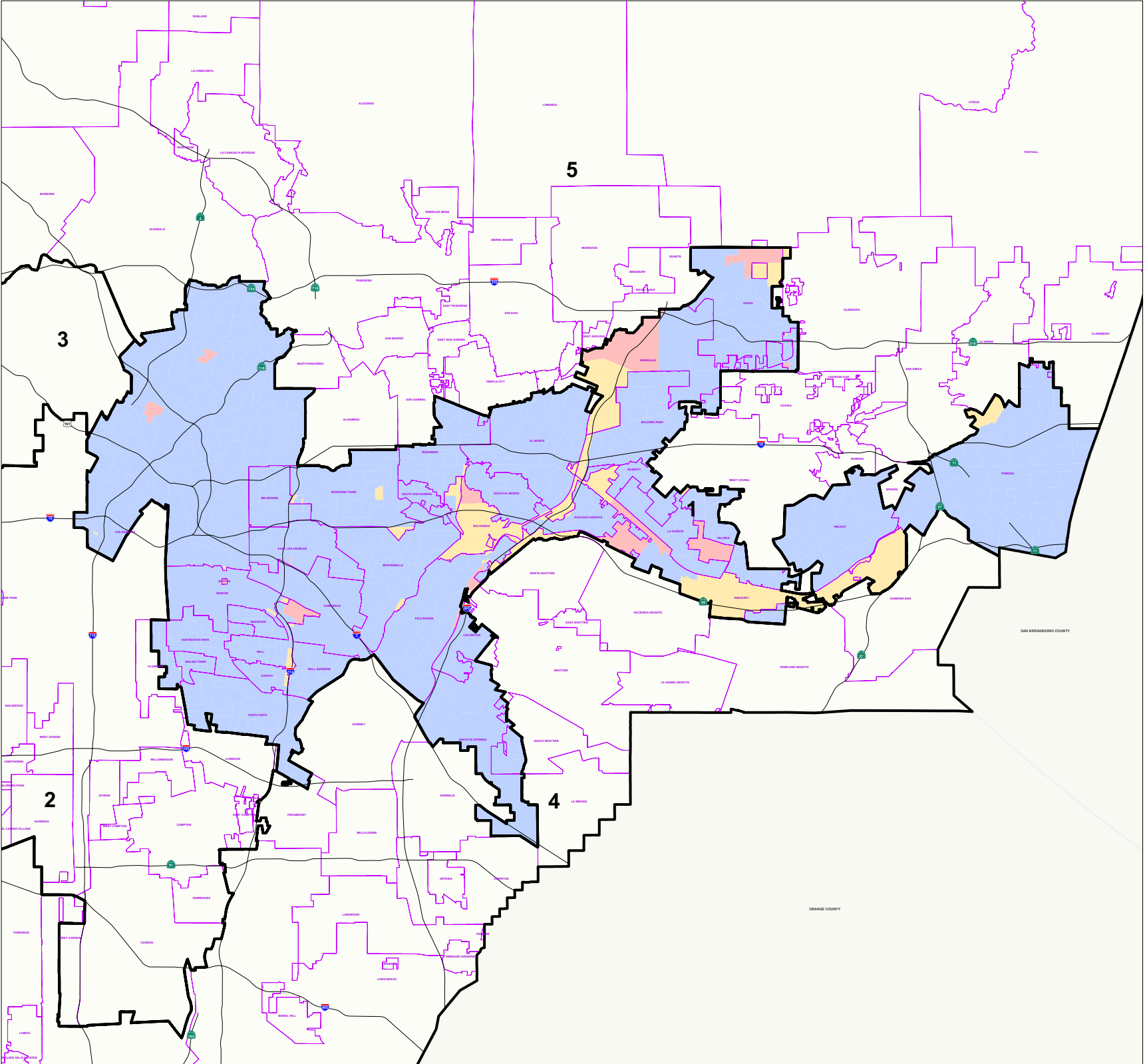
-  Supervisorial District
-  Communities
- Voters by Age 40-49**
-  0 Percent
-  1-25%
-  26-50%
-  51-75%
-  76-100%



00.0 0.6 1.2 1.8 2.4  
Miles

THIS MAP IS SUBJECT TO CHANGE WITHOUT NOTICE  
CONTACT REGISTRAR-RECORDER/COUNTY CLERK  
PRECINCTING SECTION, 12400 IMPERIAL HIGHWAY  
NORWALK, CA 90650 TEL. No. (562) 462-2473

Data contained in this map is reproduced in whole or part  
from the Thomas Brothers Maps Digital Database. This  
map is copyrighted and reproduced with permission  
granted by Thomas Brothers Maps. All rights reserved.














**2008 Presidential  
General Election**

**1st Supervisorial District  
Age 50-59 Votes Cast  
by Election Precinct**

**Legend**

-  Supervisorial District
-  Communities
- Votes by Age 50-59**
-  0 Percent
-  1-25%
-  26-50%
-  51-75%
-  76-100%

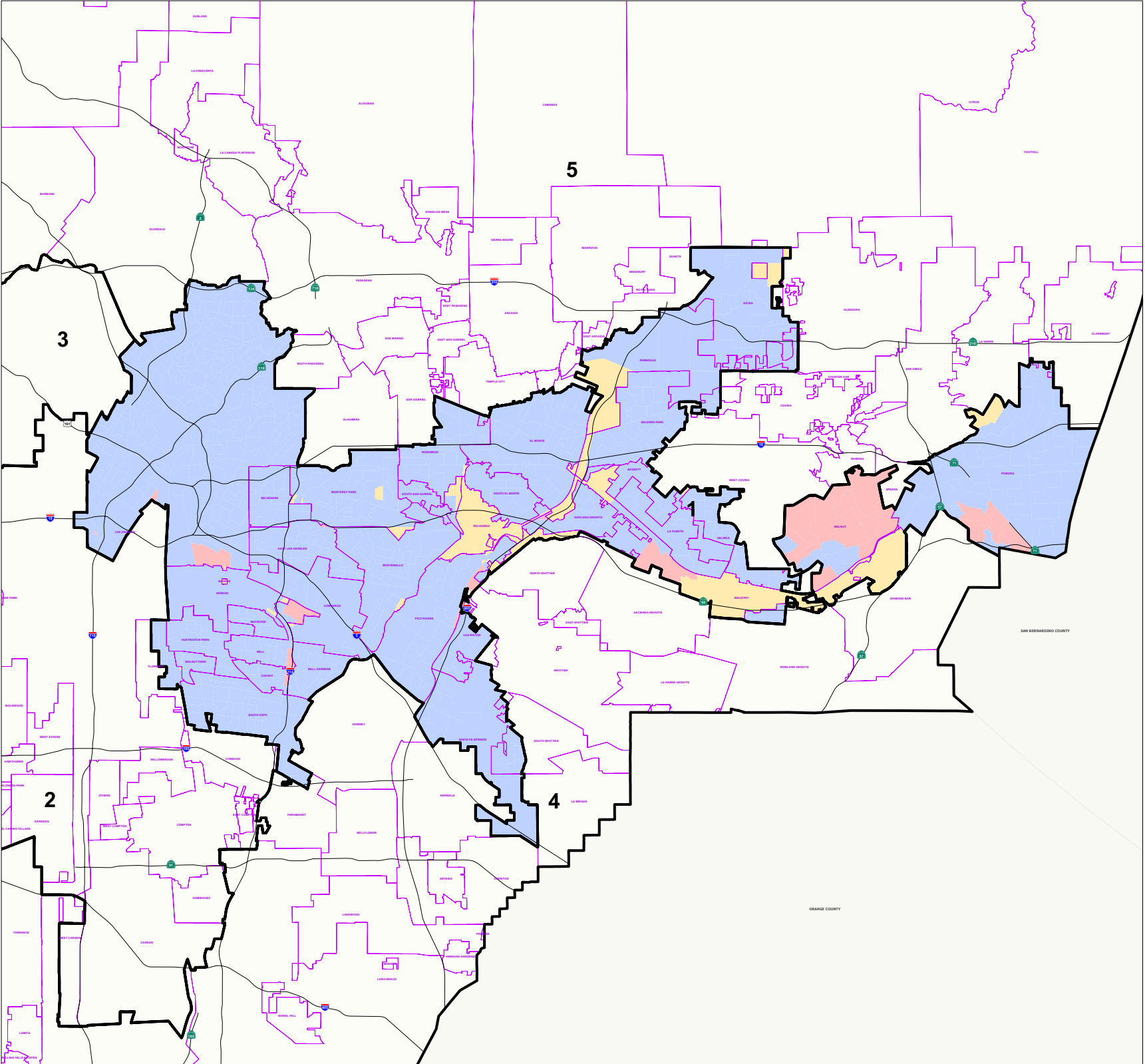


00.0 0.6 1.2 1.8 2.4  
Miles

THIS MAP IS SUBJECT TO CHANGE WITHOUT NOTICE  
CONTACT REGISTRAR-RECORDER/COUNTY CLERK  
PRECINCTING SECTION, 12400 IMPERIAL HIGHWAY  
NORWALK, CA 90650 TEL. No. (562) 462-2473

Data contained in this map is reproduced in whole or part  
from the Thomas Brothers Maps Digital Database. This  
map is copyrighted and reproduced with permission  
granted by Thomas Brothers Maps. All rights reserved.








Thursday, January 8, 2009

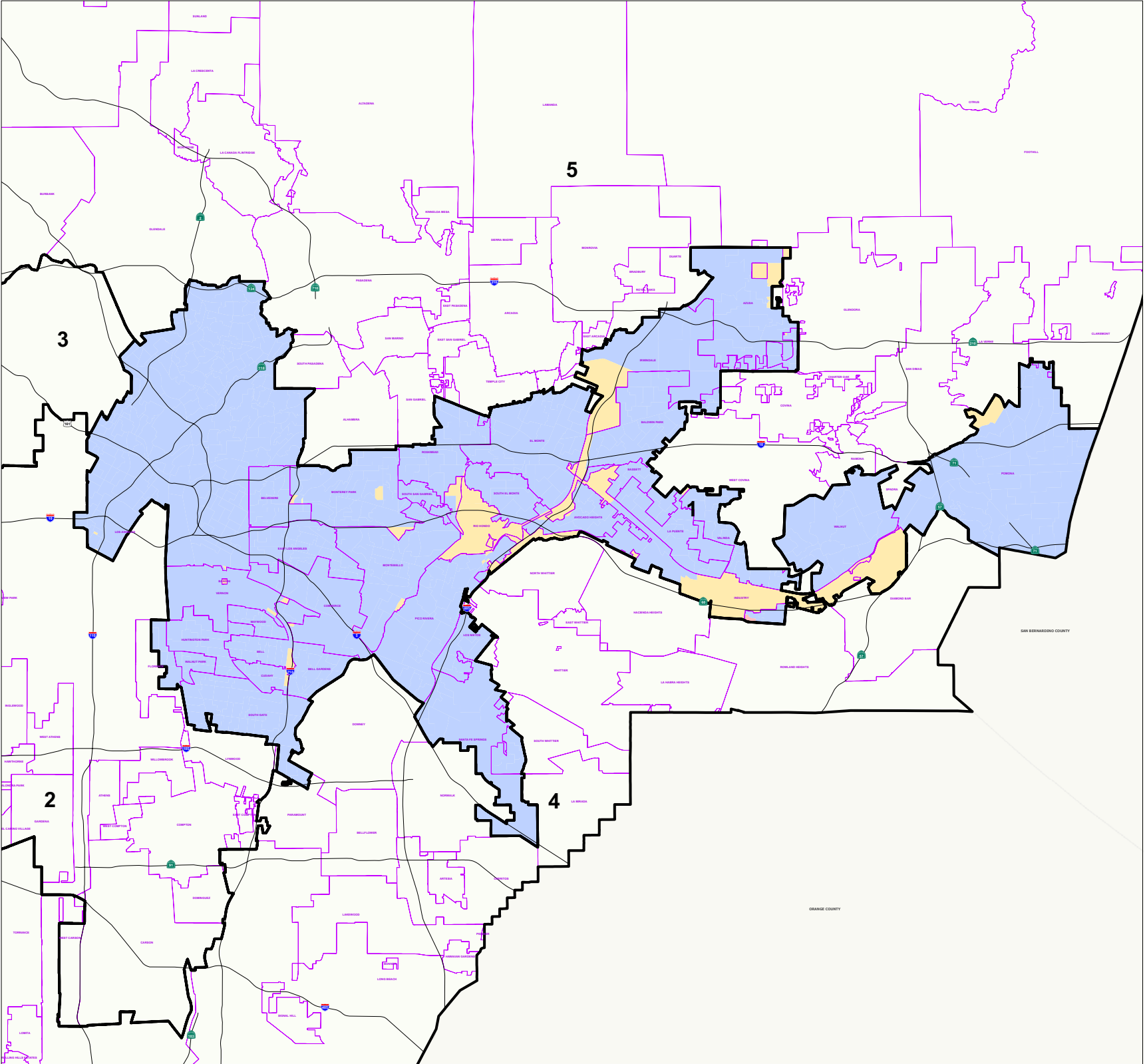




**2008 Presidential  
General Election**

**1st Supervisorial District  
Age 60-69 Votes Cast  
by Election Precinct**

- Legend**
-  Supervisorial District
  -  Communities
  - Votes by Age 60-69**
  -  0 Percent
  -  1-25%
  -  26-50%
  -  51-75%
  -  76-100%



00.0 0.6 1.2 1.8 2.4  
Miles








THIS MAP IS SUBJECT TO CHANGE WITHOUT NOTICE  
CONTACT REGISTRAR-RECORDER/COUNTY CLERK  
PRECINCTING SECTION, 12400 IMPERIAL HIGHWAY  
NORWALK, CA 90650 TEL. No. (562) 462-2473

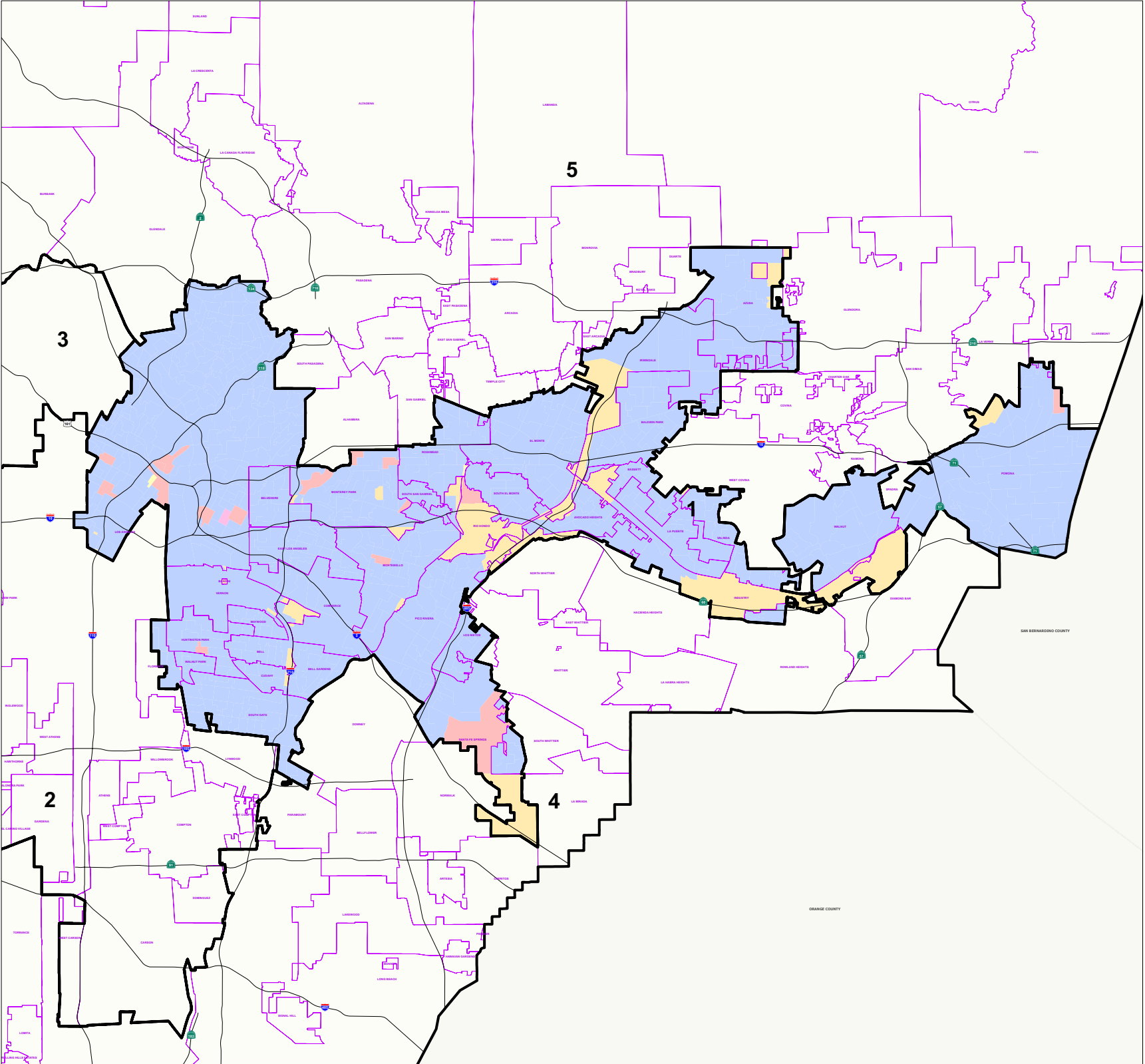
Data contained in this map is reproduced in whole or part  
from the Thomas Brothers Maps Digital Database. This  
map is copyrighted and reproduced with permission  
granted by Thomas Brothers Maps. All rights reserved.



**2008 Presidential  
General Election**

**1st Supervisorial District  
Age over 70 Votes Cast  
by Election Precinct**

- Legend**
-  Supervisorial District
  -  Communities
  - Votes by Age Over 70**
  -  0 Percent
  -  1-25%
  -  26-50%
  -  51-75%
  -  76-100%



00.0 0.6 1.2 1.8 2.4  
Miles

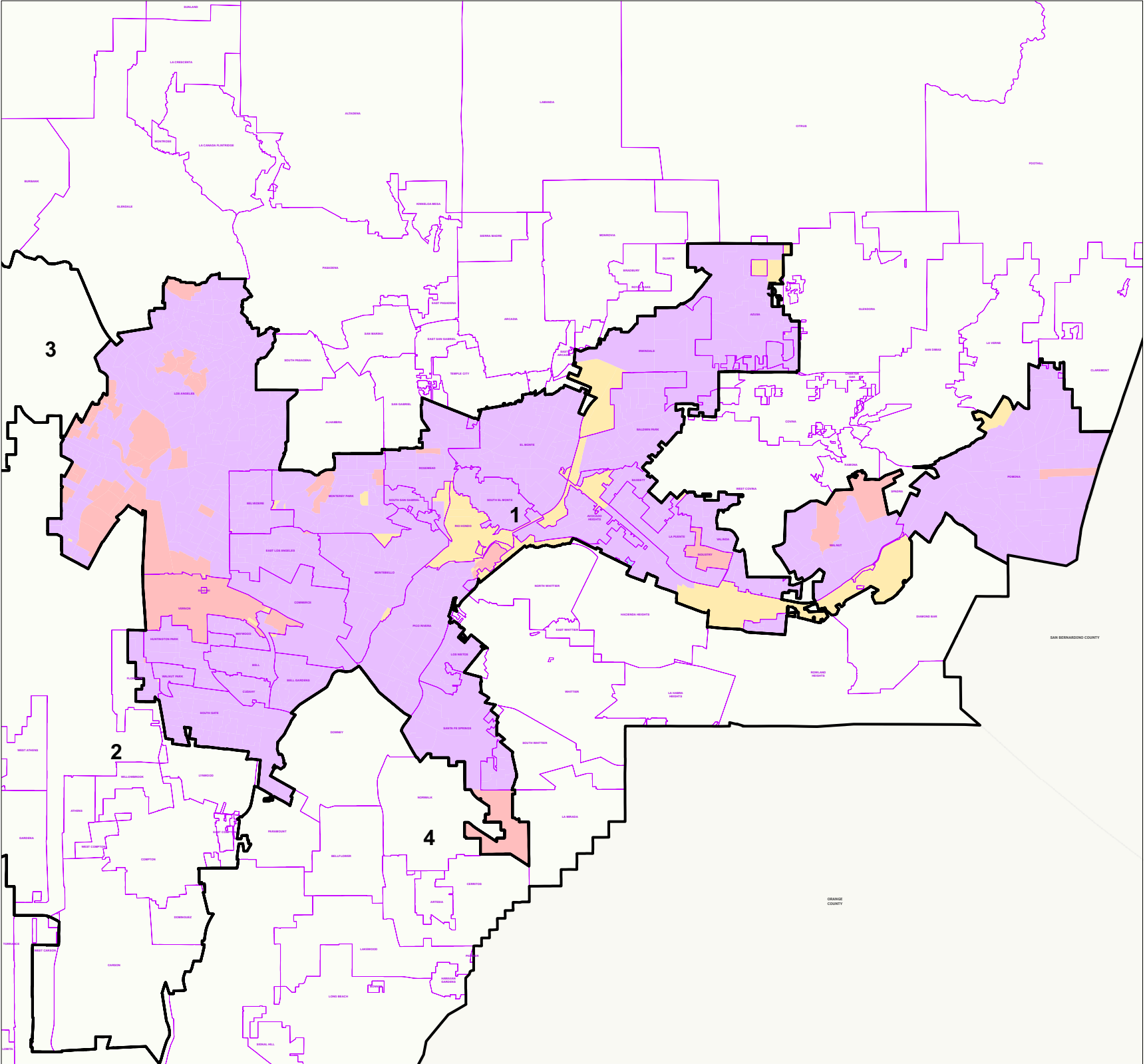
THIS MAP IS SUBJECT TO CHANGE WITHOUT NOTICE  
CONTACT REGISTRAR-RECORDER/COUNTY CLERK  
PRECINCTING SECTION, 12400 IMPERIAL HIGHWAY  
NORWALK, CA 90650 TEL. No. (562) 462-2473

Data contained in this map is reproduced in whole or part  
from the Thomas Brothers Maps Digital Database. This  
map is copyrighted and reproduced with permission  
granted by Thomas Brothers Maps. All rights reserved.










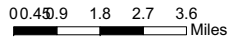
**2008 Presidential  
General Election**

**1st Supervisorial District  
Female Votes Cast  
by Election Precinct**



**Legend**

-  Supervisorial District
-  Communities
- Voters by Gender**
-  0 Percent
-  1-25%
-  26-50%
-  51-70%
-  Over 71%



THIS MAP IS SUBJECT TO CHANGE WITHOUT NOTICE  
CONTACT REGISTRAR-RECORDER/COUNTY CLERK  
PRECINCTING SECTION, 12400 IMPERIAL HIGHWAY  
NORWALK, CA 90650 TEL. No. (562) 462-2473


Data contained in this map is reproduced in whole or part  
from the Thomas Brothers Maps Digital Database. This  
map is copyrighted and reproduced with permission  
granted by Thomas Brothers Maps. All rights reserved.



**2008 Presidential  
General Election**


**1st Supervisorial District  
Male Votes Cast  
by Election Precinct**


**Legend**


 Supervisorial District


 Communities

**Votes by Gender**

 0 Percent

 1-25%

 26-50%

 51-70%

 Over 71%



0 0.4 0.9 1.8 2.7 3.6  
Miles

THIS MAP IS SUBJECT TO CHANGE WITHOUT NOTICE  
CONTACT REGISTRAR-RECORDER/COUNTY CLERK  
PRECINCTING SECTION, 12400 IMPERIAL HIGHWAY  
NORWALK, CA 90650 TEL. No. (562) 462-2473

Data contained in this map is reproduced in whole or part  
from the Thomas Brothers Maps Digital Database. This  
map is copyrighted and reproduced with permission  
granted by Thomas Brothers Maps. All rights reserved.

Thursday, January 8, 2009